



WORKBOOK
EN

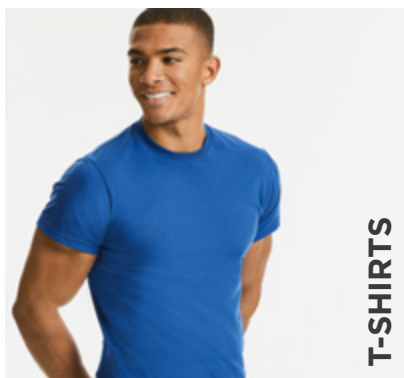
EST. 1902





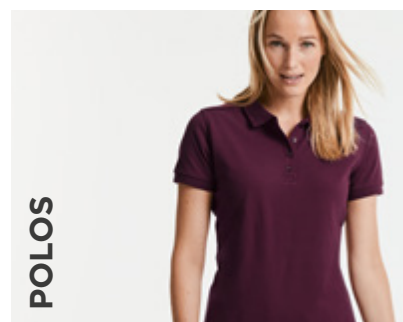
WE  THE ORIGINAL.
EST. 1902

CONTENTS



PURE ORGANIC T & LONG SLEEVE T	6
PURE ORGANIC V-NECK T	7
PURE ORGANIC HEAVY T	7
SLIM T	8
CLASSIC T	9
CLASSIC HEAVYWEIGHT T	9
HD T	10

PURE ORGANIC POLO	12
CLASSIC COTTON POLO	12
ULTIMATE COTTON POLO	13
CLASSIC POLYCOTTON POLO	14
HARDWEARING POLYCOTTON POLO	14
STRETCH POLO	15



PURE ORGANIC SWEATS	16
AUTHENTIC SWEATS	16
AUTHENTIC MELANGE SWEATS	19
CLASSIC SWEATSHIRT	20
V-NECK SWEATSHIRT & CARDIGAN	20
HOODED SWEATSHIRT	21
SWEAT PANTS	21

POLYCOTTON POPLIN SHIRT	22
PURE COTTON POPLIN SHIRT	24
STRETCH SHIRT	25
ULTIMATE STRETCH SHIRT	26
WASHED OXFORD SHIRT	27
OXFORD SHIRT	28
ULTIMATE NON-IRON SHIRT	30



COOLMAX® SHIRT	32
CLASSIC TWILL SHIRT	33
ROLL SLEEVE TWILL SHIRT	34
HERRINGBONE SHIRT	35



CREW-NECK KNITTED PULLOVER	36
V-NECK KNITTED PULLOVER	36
V-NECK KNITTED CARDIGAN	37
V-NECK SLEEVELESS KNITTED PULLOVER & CARDIGAN	37

MICROFLEECE	38
OUTDOOR FLEECE	39



CROSS JACKET	40
HOODED NANO JACKET & BODYWARMER	40
BIONIC SOFTSHELL JACKET	42
SOFTSHELL JACKET & GILET	43
SMART SOFTSHELL JACKET & GILET	44
SPORTSHELL 5000 JACKET	45
HYDRAPLUS 2000 JACKET	45

HEAVY DUTY WORKWEAR T	46
HEAVY DUTY COLLAR & CREW NECK WORKWEAR SWEATSHIRTS	46
WORKWEAR POLYCOTTON TWILL TROUSERS & SHORTS	47
HEAVY DUTY WORKWEAR TROUSERS	47
HEAVY DUTY WORKWEAR GILET	48
HEAVY DUTY WORKWEAR SOFTSHELL JACKET	49



PURE ORGANIC T & LONG SLEEVE T

108 • 100



MATERIAL / WEIGHT

100% Combed Ringspun Cotton (organic)
 Light Oxford: 97% Combed Ringspun Cotton (organic), 3% Viscose
 160g/m²

PACKING

Pack 12/ Carton 72
 108B, 100M: Pack 6/ Carton 36

108M MEN'S PURE ORGANIC T SIZES XS-3XL

- » Contemporary shaped fit
- » Single Jersey
- » Custom-developed shoulder to shoulder tape offering greater stability and an elegant look
- » Label free: Small size label in the neck (incl. product number)
- » Narrow collar band with LYCRA®
- » Comfortable cool and light texture
- » Smooth surface for best print results



108F LADIES' PURE ORGANIC T SIZES XS-2XL

- » Contemporary shaped fit
- » Single Jersey
- » Custom-developed shoulder to shoulder tape offering greater stability and an elegant look
- » Label free: Small size label in the neck (incl. product number)
- » Narrow collar band with LYCRA®
- » Comfortable cool and light texture
- » Smooth surface for best print results



108B CHILDREN'S PURE ORGANIC T SIZES 3-14 YEARS

- » Contemporary shaped fit
- » Single Jersey
- » Custom-developed shoulder to shoulder tape offering greater stability and an elegant look
- » Label free: Small size label in the neck (incl. product number)
- » Narrow collar band with LYCRA®
- » Comfortable cool and light texture
- » Smooth surface for best print results



100M PURE ORGANIC LONG SLEEVE T SIZES XS-3XL

- » Contemporary shaped fit
- » Single Jersey
- » Custom-developed shoulder to shoulder tape offering greater stability and an elegant look
- » Label free: Small size label in the neck (incl. product number)
- » Narrow collar band with LYCRA®
- » Comfortable cool and light texture
- » Smooth surface for best print results



PURE ORGANIC V-NECK T

103



MATERIAL / WEIGHT

100% Combed Ringspun Cotton (organic)
160g/m²

PACKING

Pack 6/ Carton 36

103M MEN'S PURE ORGANIC V-NECK T SIZES XS-3XL

- » Contemporary shaped fit
- » Single Jersey
- » Custom-developed shoulder to shoulder tape offering greater stability and an elegant look
- » Label free: Small size label in the neck (incl. product number)
- » Classic narrow V-neck with cotton/ LYCRA® rib
- » Comfortable cool and light texture
- » Smooth surface for best print results



103F LADIES' PURE ORGANIC V-NECK T SIZES XS-2XL

- » Contemporary shaped fit
- » Single Jersey
- » Custom-developed shoulder to shoulder tape offering greater stability and an elegant look
- » Label free: Small size label in the neck (incl. product number)
- » Classic narrow V-neck with cotton/ LYCRA® rib
- » Comfortable cool and light texture
- » Smooth surface for best print results



PURE ORGANIC HEAVY T

118



MATERIAL / WEIGHT

100% Combed Ringspun Cotton (organic)
190g/m²

PACKING

Pack 6/ Carton 36

118M MEN'S PURE ORGANIC HEAVY T SIZES XS-3XL

- » Contemporary shaped fit
- » Single Jersey
- » Custom-developed shoulder to shoulder tape offering greater stability and an elegant look
- » Label free: Small size label in the neck (incl. product number)
- » Narrow collar band with LYCRA® and single top stitch
- » Comfortable cool texture despite heavier weight
- » Smooth surface for best print results



118F LADIES' PURE ORGANIC HEAVY T SIZES XS-2XL

- » Contemporary shaped fit
- » Single Jersey
- » Custom-developed shoulder to shoulder tape offering greater stability and an elegant look
- » Label free: Small size label in the neck (incl. product number)
- » Narrow collar band with LYCRA® and single top stitch
- » Comfortable cool texture despite heavier weight
- » Smooth surface for best print results



SLIM T

155



MATERIAL / WEIGHT

100% Ringspun Cotton
Light Oxford: 93% Cotton, 7% Viscose
White: 140g/m², Colours: 145g/m²

PACKING

Pack 10/ Carton 100

155M MEN'S SLIM T SIZES S-2XL

- » Long slim fit
- » Single Jersey
- » Back neck tape
- » 1x1 rib knit collar with top stitch
- » Tubular construction



155F LADIES' SLIM T SIZES XS-XL

- » Long slim fit
- » Single Jersey
- » Back neck tape
- » 1x1 rib knit collar with top stitch
- » Side seamed for a feminine shape



155B CHILDREN'S SLIM T SIZES 1-14 YEARS

- » Long slim fit
- » Single Jersey
- » Back neck tape
- » 1x1 rib knit collar with top stitch
- » Tubular construction



155F

75%

WIND ENERGY

We manufacture the majority of our T-shirts in our own production facilities, where 75% of the power is provided by our wind farm.



CLASSIC T

180



MATERIAL / WEIGHT

100% Ringspun Cotton
Light Oxford: 93% Cotton, 7% Viscose
White: 175g/m², Colours: 180g/m²

PACKING

Pack 12/Carton 72

180M CLASSIC T SIZES XS-4XL

- » Classic Fit
- » Single Jersey
- » Shoulder to shoulder neck tape
- » 1x1 rib knit collar with top stitch

- » Tubular construction (Light Oxford colour has side seamed construction)

XS not available in Convo Grey. 3XL & 4XL only available in Black, Bottle Green, Bright Royal, French Navy and White



180B CHILDREN'S CLASSIC T SIZES 1-12 YEARS

- » Classic Fit
- » Single Jersey
- » Shoulder to shoulder neck tape
- » 1x1 rib knit collar with top stitch
- » Name label



CLASSIC HEAVYWEIGHT T

215



MATERIAL / WEIGHT

100% Combed Ringspun Cotton
White: 210g/m², Colours: 215g/m²

PACKING

Pack 12/Carton 72

215M CLASSIC HEAVYWEIGHT T SIZES S-2XL

- » Classic Fit
- » Single Jersey
- » Shoulder to shoulder neck tape
- » 1x1 rib knit collar with top stitch
- » Tubular construction



HD T

165



MATERIAL / WEIGHT

65% Polyester, 35% Combed Ringspun Cotton
White: 155g/m², Colours: 160g/m²

PACKING

Pack 6/ Carton 36

165M MEN'S HD T

SIZES XS-3XL

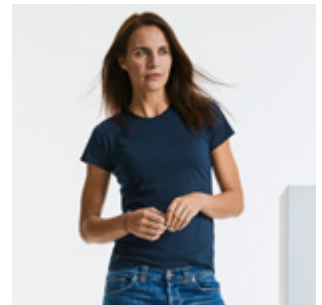
- » Crew neck with single needle stitching
- » PolyCotton mix
- » Shoulder to shoulder neck tape
- » Side seamed
- » Removable, adhesive neck label
- » Narrow neck rib



165F LADIES' HD T

SIZES XS-2XL

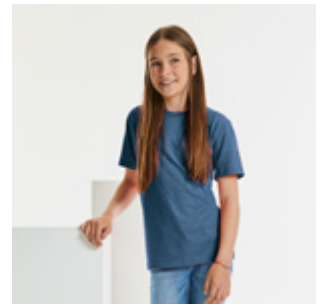
- » Crew neck with single needle stitching
- » PolyCotton mix
- » Shoulder to shoulder neck tape
- » Side seamed
- » Removable, adhesive neck label
- » Narrow neck rib



165B CHILDREN'S HD T

SIZES 5-14 YEARS

- » Crew neck with single needle stitching
- » PolyCotton mix
- » Shoulder to shoulder neck tape
- » Side seamed
- » Removable, adhesive neck label
- » Narrow neck rib



165B



DISCOVER HOW WE WORK
FOR A BETTER TOMORROW
www.russelleurope.com/csr

[**belong**]
TO A BETTER
FUTURE

215M

PURE ORGANIC POLO

508



MATERIAL / WEIGHT

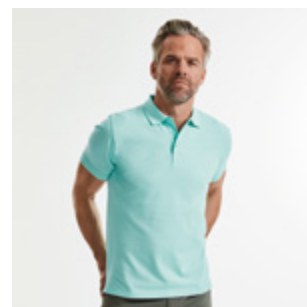
100% Combed Ringspun Cotton (organic)
215g/m²

PACKING

Pack 6/ Carton 36

508M MEN'S PURE ORGANIC POLO SIZES S-3XL

- » Contemporary shaped fit
- » Piqué
- » Distinguished front placket with cross stitched element to provide best look and better placket stability
- » Smooth and even surface for best print results
- » Label free: Small size label in the neck (incl. product number)
- » Dyed-to-match buttons



508F LADIES' PURE ORGANIC POLO SIZES XS-2XL

- » Contemporary shaped fit
- » Piqué
- » Distinguished front placket with cross stitched element to provide best look and better placket stability
- » Smooth and even surface for best print results
- » Label free: Small size label in the neck (incl. product number)
- » Dyed-to-match buttons



CLASSIC COTTON POLO

569



MATERIAL / WEIGHT

100% Ringspun Cotton
White: 195g/m², Colours: 200g/m²

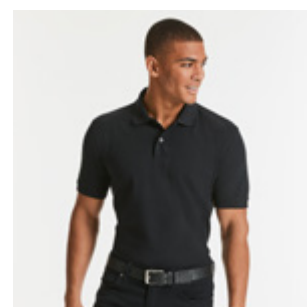
PACKING

Pack 6/ Carton 36

569M MEN'S CLASSIC COTTON POLO SIZES XS-4XL

- » Classic fit with side vents
- » Side vents for ease of fit
- » Reinforced shoulder seams with neck tape
- » Classic style flat knit cuffs
- » Twin needle hem at bottom for added stability

XS only available in French Navy and White. 3XL & 4XL only available in Black, French Navy and White



569F LADIES' CLASSIC COTTON POLO SIZES XS-2XL

- » Classic fit with side vents
- » Side vents for ease of fit
- » Reinforced shoulder seams with neck tape
- » Open sleeve with twin needle hem
- » Twin needle hem at bottom for added stability



ULTIMATE COTTON POLO

577



MATERIAL / WEIGHT

100% Combed Ringspun Cotton
White: 210g/m², Colours: 215g/m²

PACKING

Pack 6/ Carton 36

577M MEN'S ULTIMATE COTTON POLO SIZES XS-4XL

- » Classic Fit
- » Contemporary cut
- » Fine honeycomb pique structure
- » Reinforced shoulder seams with herringbone neck tape
- » Side vents with internal herringbone taping for added stability and better fit
- » Classic style flat knit cuffs
- » Pre-shrunk and suitable for wash up to 60°C



577F LADIES' ULTIMATE COTTON POLO SIZES XS-2XL

- » Classic Fit
- » Contemporary cut
- » Fine honeycomb pique structure
- » Reinforced shoulder seams with herringbone neck tape
- » Side vents with internal herringbone taping for added stability and better fit
- » Sleeves with twin needle hem
- » Pre-shrunk and suitable for wash up to 60°C



WATER SAVINGS

Modern technologies reduce water consumption in the production process.



577M

CLASSIC POLYCOTTON POLO

539



MATERIAL / WEIGHT

65% Polyester, 35% Ringspun Cotton
White: 210g/m², Colours: 215g/m²

PACKING

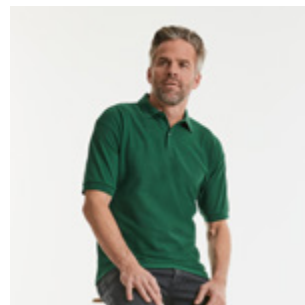
Pack 6/Carton 36

539M MEN'S CLASSIC POLYCOTTON POLO

SIZES XS-6XL

- » Classic Fit
- » Fine honeycomb pique structure
- » Double yarn construction
- » Reinforced shoulder seams with neck tape
- » Classic style flat knit cuffs
- » Twin needle hem at bottom for added stability

3XL-4XL only available in Bottle Green, Black, Bright Royal, Classic Red, French Navy, Light Oxford and White. 5XL & 6XL only available in Black, Bright Royal, French Navy and White.

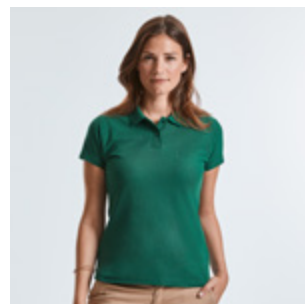


539F LADIES' CLASSIC POLYCOTTON POLO

SIZES XS-4XL

- » Classic Fit
- » Fine honeycomb pique structure
- » Double yarn construction
- » Reinforced shoulder seams with neck tape
- » Open sleeve with twin needle hem
- » Twin needle hem at bottom for added stability

3XL & 4XL only available in Bottle Green, Bright Royal and French Navy



539B CHILDREN'S CLASSIC POLYCOTTON POLO

SIZES 1-12 YEARS

- » Classic Fit
- » Fine honeycomb pique structure
- » Double yarn construction
- » Reinforced shoulder seams with neck tape
- » Classic style flat knit cuffs
- » Name label
- » Twin needle hem at bottom for added stability



HARDWEARING POLYCOTTON POLO

599



MATERIAL / WEIGHT

65% Polyester, 35% Ringspun Cotton
White: 210g/m², Colours: 215g/m²

PACKING

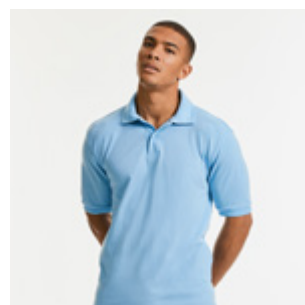
Pack 6/Carton 36

599M HARDWEARING POLYCOTTON POLO

SIZES XS-6XL

- » Classic fit with side vents
- » Side vents for ease of fit
- » Reinforced shoulder seams with neck tape
- » Flat knit collar and cuffs with double ripple effect
- » Twin needle hem at bottom for added stability

5XL & 6XL only available in Black, Bottle Green, Bright Royal, French Navy and White



STRETCH POLO

566 • 567



MATERIAL / WEIGHT

95% Combed Ringspun Cotton; 5% LYCRA®
 Light Oxford: 88% Combed Ringspun Cotton,
 7% Viscose, 5% LYCRA®
 White: 205g/m², Colours: 210g/m²

PACKING

Pack 6/ Carton 36

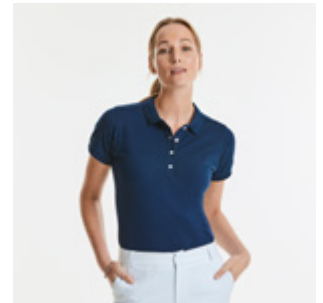
566M MEN'S FITTED STRETCH POLO FIT FITTED • SIZES S-3XL

- » Slim leaf collar
- » Ribbed cuffs
- » Strip of self-colour fabric along shoulder seam
- » Shorter side vents with herringbone tape
- » Soft handfeel
- » Contrast buttons



566F LADIES' FITTED STRETCH POLO FIT FITTED • SIZES XS-2XL

- » Slim leaf collar
- » Ribbed cuffs
- » Strip of self-colour fabric along shoulder seam
- » Shorter side vents with herringbone tape
- » Soft handfeel
- » Slimmer, 4 button placket
- » Contrast buttons



567M MEN'S TAILORED STRETCH POLO FIT TAILORED • SIZES S-3XL

- » Slim leaf collar
- » Ribbed cuffs
- » Strip of self-colour fabric along shoulder seam
- » Shorter side vents with herringbone tape
- » Soft handfeel
- » Dyed-to-match buttons
- » Label free: Small size label in the neck (incl. product number)



567F LADIES' TAILORED STRETCH POLO FIT TAILORED • SIZES XS-2XL

- » Slim leaf collar
- » Ribbed cuffs
- » Strip of self-colour fabric along shoulder seam
- » Shorter side vents with herringbone tape
- » Soft handfeel
- » Slimmer, 4 button placket
- » Dyed-to-match buttons
- » Label free: Small size label in the neck (incl. product number)



PURE ORGANIC SWEATS

208 · 209



MATERIAL / WEIGHT

100% Combed Ringspun Cotton (organic)
300g/m²

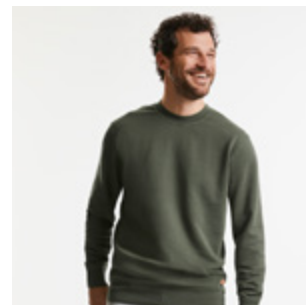
PACKING

Pack 3/ Carton 24

208M PURE ORGANIC REVERSIBLE SWEAT

SIZES XS-3XL

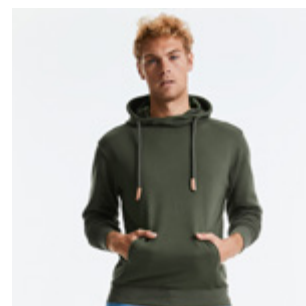
- » Contemporary fit and modern design
- » Unbrushed Twill-Terry
- » Label free on neck: inner small pocket on hem is hiding size and care labels
- » Ribbed cuffs, neckline and body hem with LYCRA®
- » Soft handfeel
- » Matching herringbone tape at inside back neck



209M PURE ORGANIC HIGH COLLAR HOODED SWEAT

SIZES XS-3XL

- » Contemporary fit and modern design
- » Unbrushed Twill-Terry
- » Label free: Small size label in the neck (incl. product number)
- » Elastane on ribbed cuffs and waistband trim to retain shape and smart appearance
- » Perfect high collar hood construction with two piece workmanship for better print positioning
- » Half moon neck insert (locker patch) for individualisation



AUTHENTIC SWEATS

262 · 271 · 265 · 266 · 267 · 270 · 268



MATERIAL / WEIGHT

80% Combed Ringspun Cotton, 20% Polyester
100% cotton face yarn (3-thread-construction)
280g/m²

PACKING

Pack 3/ Carton 24
Pack 6/ Carton 36 (262M)

262M THE AUTHENTIC SWEAT

SIZES XS-4XL

- » Straighter cut for a modern look
- » 100% cotton face yarn provides the best surface for decoration
- » Herringbone neck tape for comfort and stability
- » Side seams improve fit

4XL only available in Black, French Navy and Light Oxford



271B CHILDREN'S AUTHENTIC RAGLAN SWEAT

SIZES 3-14 YEARS

- » Straighter cut for a modern look
- » 100% cotton face yarn provides the best surface for decoration
- » Herringbone neck tape for comfort and stability
- » Side seams improve fit
- » Raglan sleeve solution for better movement and adding additional space to the wearer



265M MEN'S AUTHENTIC HOODED SWEAT
SIZES XS-4XL

- » Straighter cut for a modern look
- » 100% cotton face yarn provides the best surface for decoration
- » Flat, chunky drawcords
- » Double layer hood with cover seam drawcord channel
- » Kangaroo pockets

4XL only available in Black, French Navy and Light Oxford



265F LADIES' AUTHENTIC HOODED SWEAT
SIZES XS-XL

- » Modern feminine tailored fit
- » 100% cotton face yarn provides the best surface for decoration
- » Slimmer shoulders and leaner arms
- » Flat, chunky drawcords
- » Double layer hood with cover seam drawcord channel
- » Kangaroo pockets



265B CHILDREN'S AUTHENTIC HOODED SWEAT
SIZES 3-14 YEARS

- » Straighter cut for a modern look
- » 100% cotton face yarn provides the best surface for decoration
- » Flat, chunky drawcords
- » Double layered hood
- » Kangaroo pockets
- » No drawcords



266M MEN'S AUTHENTIC ZIPPED HOOD JACKET
SIZES XS-4XL

- » Straighter cut for a modern look
- » 100% cotton face yarn provides the best surface for decoration
- » Flat, chunky drawcords
- » Double layer hood with cover seam drawcord channel
- » Side seam pockets
- » YKK Metal (Antique Silver) Full Zipper
- » Kissing (covered) zip for full cross body decoration

4XL only available in Black, French Navy and Light Oxford



266F LADIES' AUTHENTIC ZIPPED HOOD JACKET
SIZES XS-XL

- » Modern feminine tailored fit
- » 100% cotton face yarn provides the best surface for decoration
- » Flat, chunky drawcords
- » Double layer hood with cover seam drawcord channel
- » Side seam pockets
- » YKK Metal (Antique Silver) Full Zipper
- » Kissing (covered) zip for full cross body decoration



266B CHILDREN'S AUTHENTIC ZIPPED HOOD JACKET
SIZES 3-14 YEARS

- » Straighter cut for a modern look
- » 100% cotton face yarn provides the best surface for decoration
- » No drawcords
- » Double layered hood
- » Side seam pockets
- » YKK Metal (Antique Silver) Full Zipper
- » Kissing (covered) zip for full cross body decoration
- » Top stitching for a greater seam resistance



267M MEN'S AUTHENTIC SWEAT JACKET

SIZES XS-4XL

- » Straighter cut for a modern look
- » 100% cotton face yarn provides the best surface for decoration
- » Herringbone neck tape for comfort and stability
- » Side seam pockets
- » Welt pocket workmanship for a smooth and soft pocket entry
- » Self-fabric cadet collar
- » YKK Metal (Antique Silver) Full Zipper

4XL only available in Black, French Navy and Light Oxford



267F LADIES' AUTHENTIC SWEAT JACKET

SIZES XS-XL

- » Modern feminine tailored fit
- » 100% cotton face yarn provides the best surface for decoration
- » Herringbone neck tape for comfort and stability
- » Side seam pockets
- » Welt pocket workmanship for a smooth and soft pocket entry
- » Self-fabric cadet collar
- » YKK Metal (Antique Silver) Full Zipper



270M AUTHENTIC QUARTER ZIP SWEAT

SIZES XS-4XL

- » 100% cotton face yarn provides the best surface for decoration
- » Herringbone neck tape for comfort and stability with front facing shoulder seams
- » Brushed fleece
- » Kissing (covered) zip for full cross body decoration
- » Self-fabric cadet collar
- » YKK Metal (Antique Silver) ¼ zip



268M MEN'S AUTHENTIC JOG PANTS

SIZES S-2XL

- » Contemporary fit and modern design
- » 100% cotton face yarn provides the best surface for decoration
- » Self-fabric welt pockets with concealed zip fastening
- » Back patch pocket
- » Flat, chunky drawcords
- » Rib at cuff and waistband



OEKO-TEX

100% CERTIFIED

All Russell products are Oeko-Tex® Standard 100 (class II) certified. 08-5941 Shirley



266F

AUTHENTIC MELANGE SWEATS

260 · 261 · 263



MATERIAL / WEIGHT

75% Combed Ringspun Cotton, 21% Polyester,
*4% Viscose *Carbon Melange: 77% cotton,
23% Polyester
280g/m²

PACKING

Pack 3/ Carton 24

260M AUTHENTIC MELANGE SWEAT SIZES XS-3XL

- » Straighter cut for a modern look
- » High quality surface for best print results
- » Half moon neck insert for individualisation
- » Label free: Small size label in the neck (incl. product number)
- » Fashionable V-insert with decorative seam at collar
- » Fashionable offset shoulder seams



261M MEN'S AUTHENTIC MELANGE HOODED SWEAT SIZES XS-3XL

- » Straighter cut for a modern look
- » High quality surface for best print results
- » Half moon neck insert for individualisation
- » Label free: Small size label in the neck (incl. product number)
- » Inserted kangaroo pocket to easily print over seams



261F LADIES' AUTHENTIC MELANGE HOODED SWEAT SIZES XS-XL

- » Modern feminine tailored fit
- » High quality surface for best print results
- » Half moon neck insert for individualisation
- » Label free: Small size label in the neck (incl. product number)
- » Inserted kangaroo pocket to easily print over seams



263M MEN'S AUTHENTIC MELANGE ZIPPED HOOD SWEAT SIZES XS-3XL

- » Straighter cut for a modern look
- » High quality surface for best print results
- » Half moon neck insert for individualisation
- » Label free: Small size label in the neck (incl. product number)
- » Inserted kangaroo pocket to easily print over seams
- » YKK Metal (Antique Silver) Full Zipper
- » Kissing (covered) zip for full cross body decoration



263F LADIES' AUTHENTIC MELANGE ZIPPED HOOD SWEAT SIZES XS-XL

- » Modern feminine tailored fit
- » High quality surface for best print results
- » Half moon neck insert for individualisation
- » Label free: Small size label in the neck (incl. product number)
- » Inserted kangaroo pocket to easily print over seams
- » YKK Metal (Antique Silver) Full Zipper
- » Kissing (covered) zip for full cross body decoration



CLASSIC SWEATSHIRT

762



MATERIAL / WEIGHT

50% Combed Ringspun Cotton, 50% Polyester
295g/m²

PACKING

Pack 6/ Carton 36

762M CLASSIC SWEATSHIRT SIZES XS-4XL

- » SpotShield™ stain resistant coating
- » Tubular body construction for added stability
- » Herringbone neck tape for comfort
- » Raglan sleeve
- » 1x1 rib trim with elastane on hem and cuffs

3XL & 4XL only available in Bright Royal, Bottle Green and French Navy



762B CHILDREN'S CLASSIC SWEATSHIRT SIZES 1-12 YEARS

- » SpotShield™ stain resistant coating
- » Tubular body construction for added stability
- » Herringbone neck tape for comfort
- » Raglan sleeve
- » 1x1 rib trim with elastane on hem and cuffs
- » Name label



V-NECK SWEATSHIRT & CARDIGAN

272 • 273



MATERIAL / WEIGHT

50% Combed Ringspun Cotton, 50% Polyester
295g/m²

PACKING

272B: Pack 3/ Carton 36
273B: Pack 3/ Carton 24

272B CHILDREN'S V-NECK SWEATSHIRT SIZES 3-12 YEARS

- » The V-Neck Sweat and Cardigan combine smartness with style and comfort
- » Ideal to wear with polo shirt, open neck shirt or shirt & tie
- » Ringspun cotton for softer hand feel
- » Outstanding performance - wash after wash
- » Set-in sleeves and side seams
- » Name label



273B CHILDREN'S SWEATSHIRT CARDIGAN SIZES 3-12 YEARS

- » The V-Neck Sweat and Cardigan combine smartness with style and comfort
- » Ideal to wear with polo shirt, open neck shirt or shirt & tie
- » Ringspun cotton for softer hand feel
- » Outstanding performance - wash after wash
- » Set-in sleeves and side seams
- » Side seam pockets
- » Name label



HOODED SWEATSHIRT

575



MATERIAL / WEIGHT

50% Combed Ringspun Cotton, 50% Polyester
295g/m²

PACKING

Pack 6/ Carton 24

575M HOODED SWEATSHIRT SIZES XS-2XL

- » Straighter cut for a modern look
- » Herringbone neck tape for comfort and stability
- » Double layer hood with cover seam drawcord channel
- » shoulders and leaner arms
- » Flat, chunky drawcords
- » Kangaroo pocket with bartacks



575B CHILDREN'S HOODED SWEATSHIRT SIZES 3-12 YEARS

- » Straighter cut for a modern look
- » Herringbone neck tape for comfort and stability
- » Double layer hood with cover seam drawcord channel
- » Slimmer shoulders and leaner arms
- » No drawcord in line with health and safety legislation
- » Kangaroo pocket with bartacks



SWEAT PANTS

750



MATERIAL / WEIGHT

50% Combed Ringspun Cotton, 50% Polyester
295g/m²

PACKING

Pack 6/ Carton 36

750B CHILDREN'S SWEAT PANTS SIZES 3-12 YEARS

- » Elasticated waistband and leg ends
- » Side pockets
- » No drawcord in line with health and safety legislation



POLYCOTTON POPLIN SHIRT

934 · 935 · 924 · 925 · 926



EC Easy Care

MATERIAL / WEIGHT

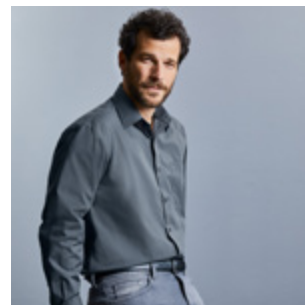
65% Polyester, 35% Cotton Poplin
White: 110g/m², Colours: 105g/m²

PACKING

Pack 1/ Carton 12

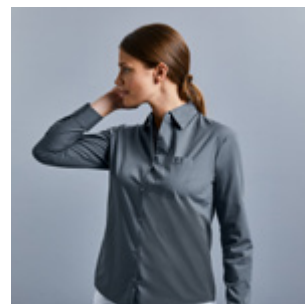
934M MEN'S LONG SLEEVE CLASSIC POLYCOTTON POPLIN SHIRT FIT CLASSIC · SIZES S-4XL

- » Easy Care
- » Left chest pocket
- » Curved hem
- » Stiffened Kent boned collar
- » Back yoke with 2 side pleats
- » Rounded 2 button adjustable cuffs



934F LADIES' LONG SLEEVE CLASSIC POLYCOTTON POPLIN SHIRT FIT CLASSIC · SIZES XS-4XL

- » Easy Care
- » Left chest pocket
- » Curved hem
- » Classic Collar
- » Rounded 2 button adjustable cuffs



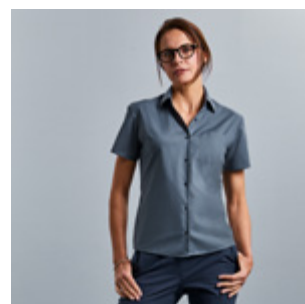
935M MEN'S SHORT SLEEVE CLASSIC POLYCOTTON POPLIN SHIRT FIT CLASSIC · SIZES S-4XL

- » Easy Care
- » Left chest pocket
- » Curved hem
- » Stiffened Kent boned collar
- » Back yoke with 2 side pleats



935F LADIES' SHORT SLEEVE CLASSIC POLYCOTTON POPLIN SHIRT FIT CLASSIC · SIZES XS-4XL

- » Easy Care
- » Left chest pocket
- » Curved hem
- » Classic Collar



924M MEN'S LONG SLEEVE TAILORED POLYCOTTON POPLIN SHIRT FIT TAILORED · SIZES S-4XL

- » Easy Care
- » Curved hem
- » Stiffened Kent boned collar
- » Rounded 2 button adjustable cuffs with option for cuff links



924F LADIES' LONG SLEEVE FITTED POLYCOTTON POPLIN SHIRT
FIT **FITTED** · SIZES **XS-4XL**

- » Easy Care
- » Curved hem
- » Stylish yoke design
- » Concealed placket
- » Darts on bust, front hem and back panel for fitted shape
- » Decorative top stitch on darts
- » Rounded double buttoned cuffs



925M MEN'S SHORT SLEEVE TAILORED POLYCOTTON POPLIN SHIRT
FIT **TAILORED** · SIZES **S-4XL**

- » Easy Care
- » Curved hem
- » Stiffened Kent boned collar
- » Double turnback hem on sleeves



925F LADIES' CAP SLEEVE FITTED POLYCOTTON POPLIN SHIRT
FIT **FITTED** · SIZES **XS-4XL**

- » Easy Care
- » Curved hem
- » Stylish yoke design
- » Concealed placket
- » Darts on bust, front hem and back panel for fitted shape
- » Decorative top stitch on darts
- » Fashionable cap sleeves



926F LADIES' 3/4 SLEEVE FITTED POLYCOTTON POPLIN SHIRT
FIT **FITTED** · SIZES **XS-4XL**

- » Easy Care
- » Curved hem
- » Stylish yoke design
- » Concealed placket
- » Darts on bust, front hem and back panel for fitted shape
- » Decorative top stitch on darts
- » Narrow 2 button adjustable cuffs



100%

TRANSPARENCY

Today we have 100% transparency by listing all of our suppliers details on our website.

934F

PURE COTTON POPLIN SHIRT

936 • 937



EC Easy Care

MATERIAL / WEIGHT

100% Cotton Poplin
White: 120g/m², Colours: 125g/m²

PACKING

Pack 1/ Carton 12

936M MEN'S LONG SLEEVE CLASSIC PURE COTTON POPLIN SHIRT FIT CLASSIC • SIZES S-4XL

- » Easy Care
- » Left chest pocket
- » Classic Kent boned collar
- » Back yoke with 2 side pleats
- » Rounded 2 button adjustable cuffs
- » Straight hem



936F LADIES' LONG SLEEVE CLASSIC PURE COTTON POPLIN SHIRT FIT CLASSIC • SIZES XS-4XL

- » Easy Care
- » Left chest pocket
- » Classic Collar
- » Rounded 2 button adjustable cuffs
- » Curved hem



937M MEN'S SHORT SLEEVE CLASSIC PURE COTTON POPLIN SHIRT FIT CLASSIC • SIZES S-4XL

- » Easy Care
- » Left chest pocket
- » Classic Kent boned collar
- » Back yoke with 2 side pleats
- » Straight hem



937F LADIES' SHORT SLEEVE CLASSIC PURE COTTON POPLIN SHIRT FIT CLASSIC • SIZES XS-4XL

- » Easy Care
- » Left chest pocket
- » Classic Collar
- » Curved hem



STRETCH SHIRT

946 · 947



EC Easy Care

MATERIAL / WEIGHT

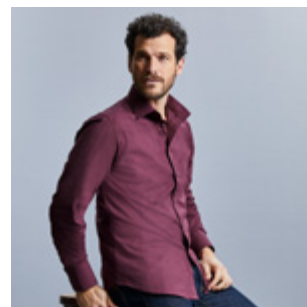
97% Cotton, 3% Elastane Poplin
140g/m²

PACKING

Pack 1/ Carton 12

946M MEN'S LONG SLEEVE FITTED STRETCH SHIRT FIT **FITTED** · SIZES **S-4XL**

- » Easy Care
- » Curved hem
- » Stiffened New Kent boned collar
- » Mitred double buttoned cuffs



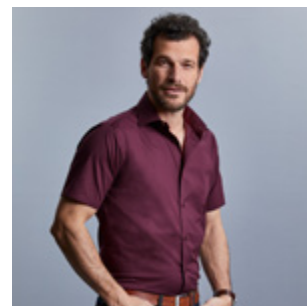
946F LADIES' 3/4 SLEEVE FITTED STRETCH SHIRT FIT **FITTED** · SIZES **XS-2XL**

- » Easy Care
- » Curved hem
- » Darts on bust front hem and back panel for fitted shape
- » Stylish elbow length 3/4 sleeve with split cuffs



947M MEN'S SHORT SLEEVE FITTED STRETCH SHIRT FIT **FITTED** · SIZES **S-4XL**

- » Easy Care
- » Curved hem
- » Stiffened New Kent boned collar



947F LADIES' SHORT SLEEVE FITTED STRETCH SHIRT FIT **FITTED** · SIZES **XS-2XL**

- » Easy Care
- » Curved hem
- » Darts on bust front hem and back panel for fitted shape
- » Stylish capped short sleeves



ULTIMATE STRETCH SHIRT

966 · 960 · 961



EC Easy Care



MATERIAL / WEIGHT

75% Cotton, 25% Elastomultiester
(LYCRA® T400® fibre) Poplin
White: 125g/m², Colours: 130g/m²

PACKING

Pack 1/ Carton 12

966M MEN'S LONG SLEEVE TAILORED CONTRAST ULTIMATE STRETCH SHIRT FIT TAILORED · SIZES S-4XL

- » Easy Care, durable fabric and longer fit
- » Under-Button-Down collar
- » Fashionable two-coloured contrasts: cuffs (inside) with zigzag stitch, collar (inside)

- » Contrasting colours at cuff buttonhole and lowest buttonhole
- » Rounded 2 button adjustable cuffs with option for cuff links



960M MEN'S LONG SLEEVE FITTED ULTIMATE STRETCH SHIRT FIT FITTED · SIZES S-4XL

- » Easy Care, durable fabric and longer fit
- » Excellent shape retention for a lasting fit
- » Moisture management for cool comfort

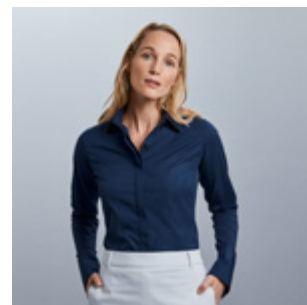
- » Stiffened New Kent boned collar
- » Square edged 2 button adjustable cuffs, with option for cuff links



960F LADIES' LONG SLEEVE FITTED ULTIMATE STRETCH SHIRT FIT FITTED SIZES XS-4XL

- » Easy Care, durable fabric and longer fit
- » Excellent shape retention for a lasting fit
- » Moisture management for cool comfort

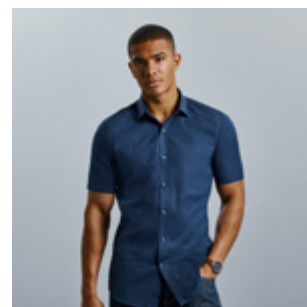
- » Neat modern collar
- » Princess cut
- » Cocktail cuffs with 2 button fastening with extended gauntlet



961M MEN'S SHORT SLEEVE FITTED ULTIMATE STRETCH SHIRT FIT FITTED SIZES S-4XL

- » Easy Care, durable fabric and longer fit
- » Excellent shape retention for a lasting fit
- » Moisture management for cool comfort
- » Stiffened New Kent boned collar

- » Neat modern collar
- » Princess cut



961F LADIES' SHORT SLEEVE FITTED ULTIMATE STRETCH SHIRT FIT FITTED · SIZES XS-4XL

- » Easy Care, durable fabric and longer fit
- » Excellent shape retention for a lasting fit
- » Moisture management for cool comfort

- » Neat modern collar
- » Princess cut



WASHED OXFORD SHIRT

920



EC Easy Care

MATERIAL / WEIGHT

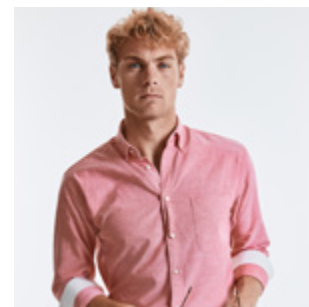
100% Cotton Oxford
130g/m²

PACKING

Pack 1/ Carton 12

920M MEN'S LONG SLEEVE TAILORED WASHED OXFORD SHIRT FIT TAILORED · SIZES S-4XL

- » Easy Care
- » Button down collar
- » 100% combed ringspun cotton
- » Garment washed
- » Fashionable contrasts: cuffs (inside), collar (inside)
- » Contrast buttons
- » Left chest pocket
- » Removable fashionable loop for optional attachment of ties or glasses
- » Rounded 2 button adjustable cuffs
- » Curved hem



920M

OXFORD SHIRT

928 • 922 • 923 • 932 • 933



EC Easy Care

MATERIAL / WEIGHT

70% Cotton, 30% Polyester Oxford
White: 130g/m², Colours: 135g/m²

PACKING

Pack 1/ Carton 12

928M MEN'S LONG SLEEVE TAILORED BUTTON-DOWN OXFORD SHIRT FIT TAILORED • SIZES S-4XL

- » Easy Care
- » Curved hem
- » Button down collar
- » Darts at back improve fit
- » Left chest pocket
- » Rounded 2 button adjustable cuffs



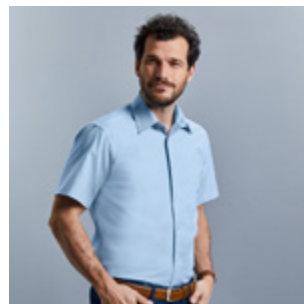
922M MEN'S LONG SLEEVE TAILORED OXFORD SHIRT FIT TAILORED • SIZES S-4XL

- » Easy Care
- » Curved hem
- » Stiffened Kent boned collar
- » Rounded 2 button adjustable cuffs, with option for cuff links



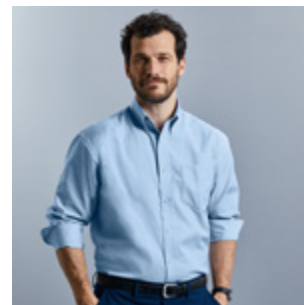
923M MEN'S SHORT SLEEVE TAILORED OXFORD SHIRT FIT TAILORED • SIZES S-4XL

- » Easy Care
- » Curved hem
- » Stiffened Kent boned collar



932M MEN'S LONG SLEEVE CLASSIC OXFORD SHIRT FIT CLASSIC • SIZES S-6XL

- » Easy Care
- » Curved hem
- » Button down collar
- » Back yoke with 2 side pleats
- » Left chest pocket
- » Rounded 2 button adjustable cuffs



932F LADIES' LONG SLEEVE TAILORED OXFORD SHIRT FIT TAILORED • SIZES XS-6XL

- » Easy Care
- » Curved hem
- » 2 button collar stand with classic shaped collar
- » Darts at bustline and back for tailored fit
- » Rounded 2 button adjustable cuffs



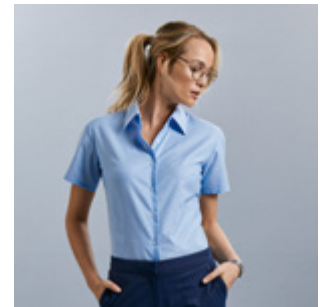
933M MEN'S SHORT SLEEVE CLASSIC OXFORD SHIRT
FIT CLASSIC · SIZES S-6XL

- » Easy Care
- » Curved hem
- » Button down collar
- » Back yoke with 2 side pleats
- » Left chest pocket



933F LADIES' SHORT SLEEVE TAILORED OXFORD SHIRT
FIT TAILORED · SIZES XS-6XL

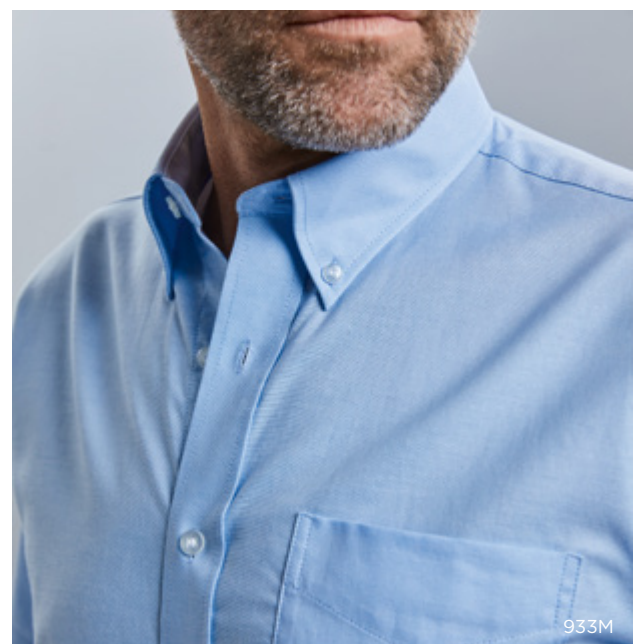
- » Easy Care
- » Curved hem
- » 2 button collar stand with classic shaped collar
- » Darts at bustline and back for tailored fit



928M



933F · 933M



933M

ULTIMATE NON-IRON SHIRT

956 · 957 · 958 · 959



MATERIAL / WEIGHT

100% Cotton Micro Twill
120g/m²

PACKING

Pack 1/ Carton 12

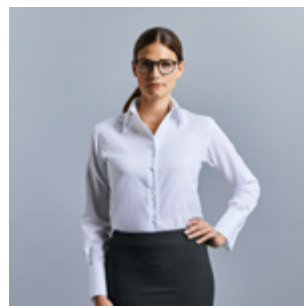
956M MEN'S LONG SLEEVE CLASSIC ULTIMATE NON-IRON SHIRT FIT CLASSIC · SIZES S-4XL

- » Easy Care
 - » Non-iron
 - » Curved hem
 - » Button down collar
 - » Back yoke with 2 side pleats
 - » Left chest pocket
- » Contemporary size mitred cuffs, adjustable with two buttons and with option for cuff links



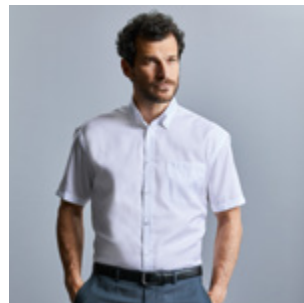
956F LADIES' LONG SLEEVE TAILORED ULTIMATE NON-IRON SHIRT FIT TAILORED · SIZES XS-4XL

- » Easy Care
 - » Non-iron
 - » Curved hem
 - » Stylish and relaxed long edged collar
 - » Twin button fastening
- » Cocktail cuffs with single button fastening with extended gauntlet and option for cuff links



957M MEN'S SHORT SLEEVE CLASSIC ULTIMATE NON-IRON SHIRT FIT CLASSIC · SIZES S-4XL

- » Easy Care
- » Non-iron
- » Curved hem
- » Button down collar
- » Back yoke with 2 side pleats
- » Left chest pocket



957F LADIES' SHORT SLEEVE TAILORED ULTIMATE NON-IRON SHIRT FIT TAILORED · SIZES XS-4XL

- » Easy Care
- » Non-iron
- » Curved hem
- » Stylish and relaxed long edged collar
- » Twin button fastening



958M MEN'S LONG SLEEVE TAILORED ULTIMATE NON-IRON SHIRT
FIT TAILORED · SIZES S-4XL

- » Easy Care
- » Non-iron
- » Curved hem
- » Stiffened Kent boned collar
- » Stylish, mitred cuffs, adjustable with two buttons and option for cuff links

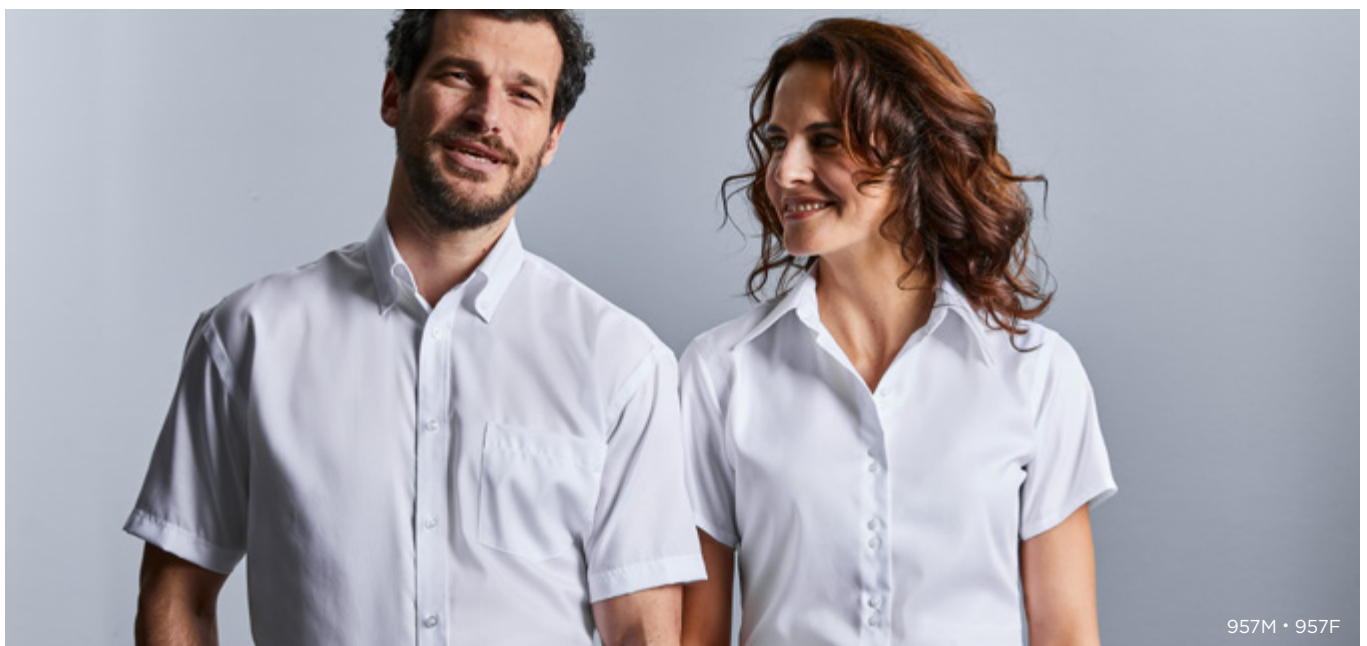
30 36 BZ



959M MEN'S SHORT SLEEVE TAILORED ULTIMATE NON-IRON SHIRT
FIT TAILORED · SIZES S-4XL

- » Easy Care
- » Non-iron
- » Curved hem
- » Stiffened Kent boned collar

30 36 BZ



COOLMAX® SHIRT

972 • 973



COOLMAX®

EC Easy Care

MATERIAL / WEIGHT

70% Cotton, 30% Coolmax®-Polyester, Micro Twill
White: 110 g/m²; Colours: 105 g/m²

PACKING

Pack 1/ Carton 12

972M MEN'S LONG SLEEVE TAILORED COOLMAX® SHIRT FIT TAILORED • SIZES S-4XL

- » Easy Care
- » Stiffened New Kent boned collar
- » Breathability and moisture regulation thanks to Coolmax® fibre technology
- » Durable Micro-Twill

- » Back yoke with 2 side pleats
- » Left chest pocket
- » Mitred 2 button adjustable cuffs



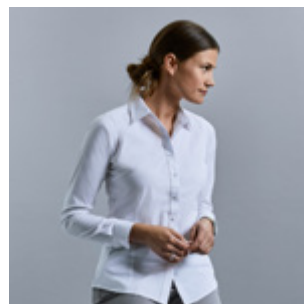
30 42



972F LADIES' LONG SLEEVE TAILORED COOLMAX® SHIRT FIT TAILORED • SIZES XS-4XL

- » Easy Care
- » Neat modern collar
- » Breathability and moisture regulation thanks to Coolmax® fibre technology
- » Durable Micro-Twill

- » Darts on bust front hem and back panel for tailored shape
- » Mitred 2 button adjustable cuffs



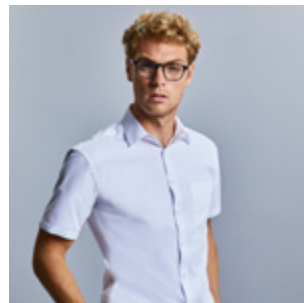
30 42



973M MEN'S SHORT SLEEVE TAILORED COOLMAX® SHIRT FIT TAILORED • SIZES S-4XL

- » Easy Care
- » Stiffened New Kent boned collar
- » Breathability and moisture regulation thanks to Coolmax® fibre technology
- » Durable Micro-Twill

- » Back yoke with 2 side pleats
- » Left chest pocket



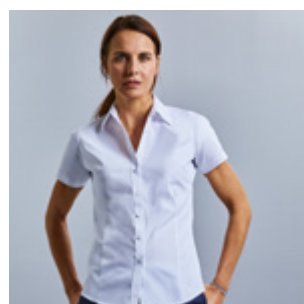
30 42



973F LADIES' SHORT SLEEVE TAILORED COOLMAX® SHIRT FIT TAILORED • SIZES XS-4XL

- » Easy Care
- » Neat modern collar
- » Breathability and moisture regulation thanks to Coolmax® fibre technology
- » Durable Micro-Twill

- » Darts on bust front hem and back panel for tailored shape



30 42



CLASSIC TWILL SHIRT

916 · 917



MATERIAL / WEIGHT

100% Cotton Twill
130g/m²

PACKING

Pack 1/ Carton 12

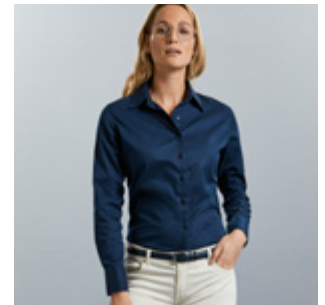
916M MEN'S LONG SLEEVE CLASSIC TWILL SHIRT FIT CLASSIC · SIZES S-4XL

- » Soft to touch peached fabric
- » Decorative fabric patch below back yoke
- » Pointed fabric patches on side seam hem
- » Dyed-to-match grosgrain back neck tape
- » Stylish double buttoned rounded edge cuffs
- » Curved hem
- » Button down collar
- » Left chest pocket



916F LADIES' LONG SLEEVE CLASSIC TWILL SHIRT FIT CLASSIC · SIZES XS-2XL

- » Soft to touch peached fabric
- » Decorative fabric patch below back yoke
- » Pointed fabric patches on side seam hem
- » Dyed-to-match grosgrain back neck tape
- » Stylish double buttoned rounded edge cuffs
- » Curved hem
- » Relaxed collar



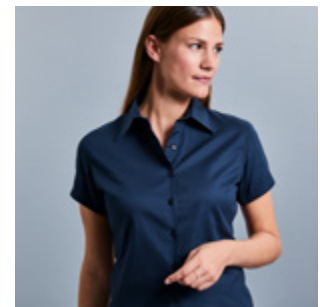
917M MEN'S SHORT SLEEVE CLASSIC TWILL SHIRT FIT CLASSIC · SIZES S-4XL

- » Soft to touch peached fabric
- » Decorative fabric patch below back yoke
- » Pointed fabric patches on side seam hem
- » Dyed-to-match grosgrain back neck tape
- » Curved hem
- » Button down collar
- » Left chest pocket



917F LADIES' SHORT SLEEVE CLASSIC TWILL SHIRT FIT CLASSIC · SIZES XS-2XL

- » Soft to touch peached fabric
- » Decorative fabric patch below back yoke
- » Pointed fabric patches on side seam hem
- » Dyed-to-match grosgrain back neck tape
- » Curved hem
- » Relaxed collar



ROLL SLEEVE TWILL SHIRT

918 • 919



MATERIAL / WEIGHT

100% Cotton Twill
130g/m²

PACKING

Pack 1/ Carton 12

918M MEN'S ROLL LONG SLEEVE FITTED TWILL SHIRT FIT FITTED • SIZES S-4XL

- » Relaxed collar
- » Dyed-to-match grosgrain fabric patches at side seam hem
- » Dyed-to-match grosgrain back neck tape
- » Two chest pockets

- » Button on outer sleeve and fabric tab on inside of sleeve allow it to be rolled up and tabbed
- » Square edged adjustable cuffs
- » Curved hem



918F LADIES' ROLL LONG SLEEVE FITTED TWILL SHIRT FIT FITTED • SIZES S-4XL

- » Relaxed collar
- » Dyed-to-match grosgrain fabric patches at side seam hem
- » Dyed-to-match grosgrain back neck tape
- » Two chest pockets

- » Button on outer sleeve and fabric tab on inside of sleeve allow it to be rolled up and tabbed
- » Square edged adjustable cuffs
- » Curved hem



919M MEN'S ROLL LONG SLEEVE FITTED TWILL SHIRT FIT FITTED • SIZES S-4XL

- » Relaxed collar
- » Dyed-to-match grosgrain fabric patches at side seam hem
- » Dyed-to-match grosgrain back neck tape
- » Two chest pockets

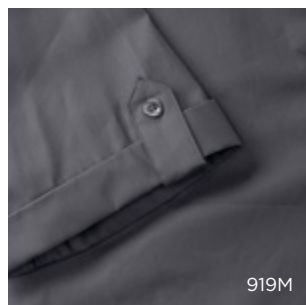
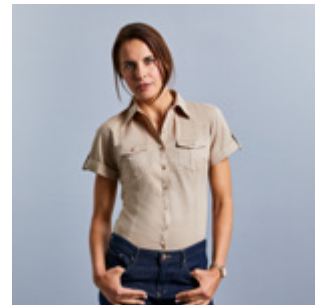
- » Button on outer sleeve and fabric tab on inside of sleeve allow it to be rolled up and tabbed
- » Curved hem



919F LADIES' ROLL LONG SLEEVE FITTED TWILL SHIRT FIT FITTED • SIZES S-4XL

- » Relaxed collar
- » Dyed-to-match grosgrain fabric patches at side seam hem
- » Dyed-to-match grosgrain back neck tape
- » Two chest pockets

- » Button on outer sleeve and fabric tab on inside of sleeve allow it to be rolled up and tabbed
- » Curved hem



HERRINGBONE SHIRT

964 • 962 • 963



MATERIAL / WEIGHT

84% Cotton, 16% Polyester Herringbone
White: 125g/m², Colours: 130g/m²

PACKING

Pack 1/ Carton 12

964M MEN'S LONG SLEEVE TAILORED CONTRAST HERRINGBONE SHIRT FIT TAILORED • SIZES S-4XL

- » Easy Care
- » Longer fit and Narrow placket
- » Curved hem
- » Under-Button-Down collar
- » Fashionable contrasts: cuffs (inside), collar (inside) with contrast piping

- » Contrasting colours at cuff buttonhole and lowest buttonhole
- » Darts at back improve fit



962M MEN'S LONG SLEEVE TAILORED HERRINGBONE SHIRT FIT TAILORED • SIZES S-4XL

- » Easy Care
- » Longer fit
- » Narrow placket
- » No show through
- » Curved hem

- » Stiffened Kent boned collar
- » Rounded 2 button adjustable cuffs, with option for cuff links



962F LADIES' LONG SLEEVE TAILORED HERRINGBONE SHIRT FIT TAILORED • SIZES XS-4XL

- » Easy Care
- » Longer fit
- » Narrow placket
- » No show through
- » Curved hem
- » Neat modern collar

- » Darts at chest, front and back hem
- » Stylish, narrow cuffs with single button fastening



963M MEN'S SHORT SLEEVE TAILORED HERRINGBONE SHIRT FIT TAILORED • SIZES S-4XL

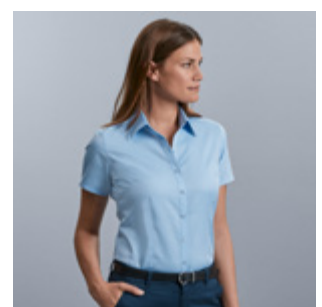
- » Easy Care
- » Longer fit
- » Narrow placket
- » No show through
- » Curved hem
- » Stiffened Kent boned collar



963F LADIES' SHORT SLEEVE TAILORED HERRINGBONE SHIRT FIT TAILORED • SIZES XS-4XL

- » Easy Care
- » Longer fit
- » Narrow placket
- » No show through
- » Curved hem
- » Neat modern collar

- » Darts at chest, front and back hem



CREW-NECK KNITTED PULLOVER

717



EC Easy Care

MATERIAL / WEIGHT

50% Cotton, 50% Acrylic CottonBlend
275g/m²

PACKING

Pack 1/ Carton 12

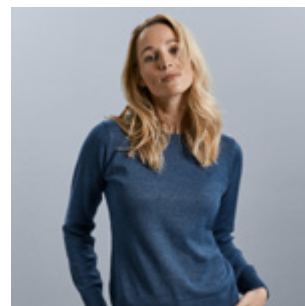
717M MEN'S CREW NECK KNITTED PULLOVER SIZES XXS-4XL

- » Classic Fit
- » Contemporary styling
- » Fully fashioned
- » Elastane on ribbed cuffs and waistband trim to retain shape and smart appearance
- » Quick to dry and Easy care



717F LADIES' CREW NECK KNITTED PULLOVER SIZES XXS-4XL

- » Classic Fit
- » Contemporary styling
- » Fully fashioned
- » Elastane on ribbed cuffs and waistband trim to retain shape and smart appearance
- » Quick to dry and Easy care



V-NECK KNITTED PULLOVER

710



EC Easy Care

MATERIAL / WEIGHT

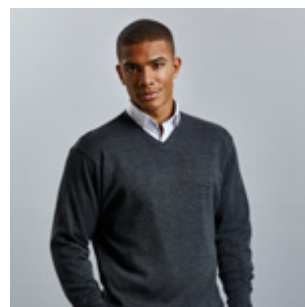
50% Cotton, 50% Acrylic CottonBlend
275g/m²

PACKING

Pack 1/ Carton 12

710M MEN'S V-NECK KNITTED PULLOVER SIZES XXS-4XL

- » Classic Fit
- » Contemporary styling
- » Fully fashioned
- » Elastane on ribbed cuffs and waistband trim to retain shape and smart appearance
- » Quick to dry and Easy care



710F LADIES' V-NECK KNITTED PULLOVER SIZES XXS-4XL

- » Classic Fit
- » Contemporary styling
- » Fully fashioned
- » Elastane on ribbed cuffs and waistband trim to retain shape and smart appearance
- » Quick to dry and Easy care



V-NECK KNITTED CARDIGAN

715



EC Easy Care

MATERIAL / WEIGHT

50% Cotton, 50% Acrylic CottonBlend
275g/m²

PACKING

Pack 1/ Carton 12

715M MEN'S V-NECK KNITTED CARDIGAN SIZES XXS-4XL

- » Classic Fit
- » Contemporary styling
- » Fully fashioned
- » Elastane on ribbed cuffs and waistband trim to retain shape and smart appearance

- » Quick to dry and Easy care
- » Dyed-to-match buttons



715F LADIES' V-NECK KNITTED CARDIGAN SIZES XXS-4XL

- » Classic Fit
- » Contemporary styling
- » Fully fashioned
- » Elastane on ribbed cuffs and waistband trim to retain shape and smart appearance

- » Quick to dry and Easy care
- » Dyed-to-match buttons



V-NECK SLEEVELESS KNITTED PULLOVER & CARDIGAN

716 · 719



EC Easy Care

MATERIAL / WEIGHT

50% Cotton, 50% Acrylic CottonBlend
275g/m²

PACKING

Pack 1/ Carton 12

716M V-NECK SLEEVELESS KNITTED PULLOVER SIZES XXS-4XL

- » Classic Fit
- » Contemporary styling
- » Fully fashioned
- » Elastane on ribbed cuffs and waistband trim to retain shape and smart appearance

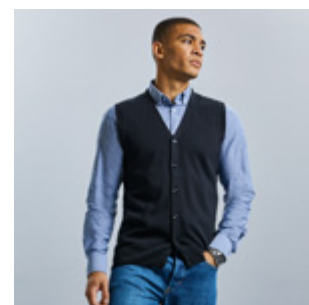
- » Refined button up fastening with inside facing and dyed-to-match buttons
- » Quick to dry and Easy care



719M MEN'S V-NECK SLEEVELESS KNITTED CARDIGAN SIZES XXS-4XL

- » Classic Fit
- » Contemporary styling
- » Fully fashioned
- » Elastane on ribbed cuffs and waistband trim to retain shape and smart appearance

- » Refined button up fastening with inside facing and dyed-to-match buttons
- » Quick to dry and Easy care



MICROFLEECE

880 • 881

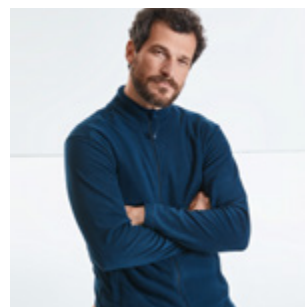


MATERIAL / WEIGHT
100% Polyester Anti-Pill Microfleece
190g/m²

PACKING
Pack 3/ Carton 24

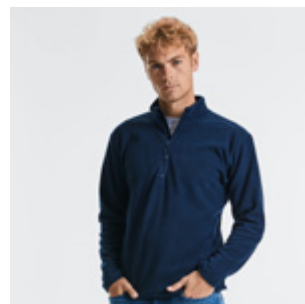
880M MEN'S FULL ZIP MICROFLEECE SIZES XS-2XL

- » Cadet collar with zip protector
- » Locker patch for personalisation
- » Side vents and side darts for a better fit and flexibility
- » Light weight high density fabric for a warm comfort
- » Zipped side pockets



881M MEN'S QUARTER ZIP MICROFLEECE SIZES S-2XL

- » Cadet collar with zip protector
- » Locker patch for personalisation
- » Side vents and side darts for a better fit and flexibility
- » Light weight high density fabric for a warm comfort



870B

DIVERSITY & INCLUSION

We build on our core value of respect for people to create a culture where everyone feels they belong.



OUTDOOR FLEECE

872 • 870 • 874



MATERIAL / WEIGHT

100% Polyester Anti-Pill Fleece
320g/m²

PACKING

Pack 3/ Carton 24

872M MEN'S OUTDOOR FLEECE GILET SIZES XS-2XL

- » Cadet collar
- » Side pockets with inside-out zips and inner mesh lining
- » Cord pulls on all zips
- » Side panel construction for modern fit
- » Bungee cord in hem



870M MEN'S FULL ZIP OUTDOOR FLEECE SIZES XS-4XL

- » Cadet collar
- » Side pockets with inside-out zips and inner mesh lining
- » Cord pulls on all zips
- » Side panel construction for modern fit
- » Bungee cord in hem



870F LADIES' FULL ZIP OUTDOOR FLEECE SIZES XS-2XL

- » Cadet collar
- » Side pockets with inside-out zips and inner mesh lining
- » Cord pulls on all zips
- » Side panel construction for modern fit
- » Bungee cord in hem



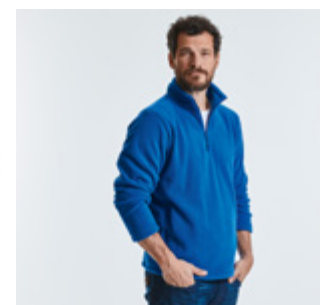
870B CHILDREN'S FULL ZIP OUTDOOR FLEECE SIZES 3-12 YEARS

- » Cadet collar
- » Side pockets with inside-out zips and inner mesh lining
- » Cord pulls on all zips
- » Side panel construction for modern fit
- » Bungee cord in hem
- » No drawcord in line with health and safety legislation



874M QUARTER ZIP OUTDOOR FLEECE SIZES XS-2XL

- » Cadet collar
- » Side pockets with inside-out zips and inner mesh lining
- » Cord pulls on all zips
- » Side panel construction for modern fit
- » Bungee cord in hem



CROSS JACKET

430



Breathable
up to 2000g/m² per 24 hours

MATERIAL / WEIGHT

100% Polyester
125g/m²

PACKING

Pack 1/ Carton 12



Windproof

430M MEN'S CROSS JACKET SIZES S-4XL

- » Contemporary shaped fit
- » High performance DWR fabric treated with Aquapel™ by Nanotex®
- » Fluorine and PFC free
- » Eco-efficient padding by Dupont™ Sorona®

- » Stand up collar with 2 snap fastener and inner storm flap to ward off wind and draught
- » Zipped inside pocket
- » Decorative sleeve flap with snap fastener
- » Discreet decoration access at inner left chest



36 FN

430F LADIES' CROSS JACKET SIZES XS-3XL

- » Contemporary shaped fit
- » High performance DWR fabric treated with Aquapel™ by Nanotex®
- » Fluorine and PFC free
- » Eco-efficient padding by Dupont™ Sorona®

- » Stand up collar with 2 snap fastener and inner storm flap to ward off wind and draught
- » Zipped inside pocket
- » Decorative sleeve flap with snap fastener
- » Discreet decoration access at inner left chest



36 FN

HOODED NANO JACKET & BODYWARMER

440 • 441



Breathable
up to 2000g/m² per 24 hours

MATERIAL / WEIGHT

100% Polyester
66g/m²

PACKING

Pack 1/ Carton 12



Windproof

440M MEN'S HOODED NANO JACKET SIZES S-4XL

- » High performance DWR fabric treated with Aquapel™ by Nanotex®
- » Fluorine and PFC free
- » Eco-efficient padding by Dupont™ Sorona®
- » Contrasting zips, lining and accents for a refined look

- » Discreet decoration access at inner left chest
- » Stretch binding at sleeves and hem
- » Adjustable 3-parted removable hood



36 IR DO FN

440F LADIES' HOODED NANO JACKET SIZES XS-3XL

- » High performance DWR fabric treated with Aquapel™ by Nanotex®
- » Fluorine and PFC free
- » Eco-efficient padding by Dupont™ Sorona®
- » Contrasting zips, lining and accents for a refined look

- » Discreet decoration access at inner left chest
- » Stretch binding at sleeves and hem
- » Adjustable 3-parted removable hood



36 IR DO FN

441M MEN'S NANO BODYWARMER
SIZES **S-4XL**

- » High performance DWR fabric treated with Aquapel™ by Nanotex®
 - » Fluorine and PFC free
 - » Eco-efficient padding by Dupont™ Sorona®
 - » Contrasting zips, lining and accents for a refined look
- » Discreet decoration access at inner left chest
 - » Adjustable hem with bungee cord



441F LADIES' NANO BODYWARMER
SIZES **XS-3XL**

- » High performance DWR fabric treated with Aquapel™ by Nanotex®
 - » Fluorine and PFC free
 - » Eco-efficient padding by Dupont™ Sorona®
 - » Contrasting zips, lining and accents for a refined look
- » Discreet decoration access at inner left chest
 - » Adjustable hem with bungee cord



SUSTAINABLE SOURCING

Sorona® is 37% plant based.



440M • 440F



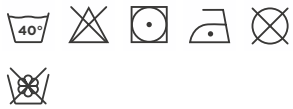
430F • 430M



440F

BIONIC SOFTSHELL JACKET

410



Breathable
up to 5000g/m² per 24 hours

Windproof

Waterproof material
up to 5000mm

MATERIAL / WEIGHT

94% Polyester, 6% Elastane treated with Bionic-Finish® Eco (3 layer softshell jacket) 320g/m²

PACKING

Pack 1/ Carton 12

410M MEN'S BIONIC SOFTSHELL JACKET SIZES XS-4XL

- » High performance DWR fabric with hydrophobic membrane
- » Treated with Bionic-Finish® Eco
- » Fluorine and PFC free
- » Contrasting zips and accents for a refined look
- » High moisture vapour transfer with hydroshell air panels at armpits for enhanced movement and breathability



410F LADIES' BIONIC SOFTSHELL JACKET SIZES XS-4XL

- » High performance DWR fabric with hydrophobic membrane
- » Treated with Bionic-Finish® Eco
- » Fluorine and PFC free
- » Contrasting zips and accents for a refined look
- » High moisture vapour transfer with hydroshell air panels at armpits for enhanced movement and breathability



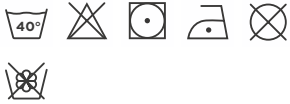
410M • 410F



410F

SOFTSHELL JACKET & GILET

140 • 141



Breathable

Windproof

Waterproof material up to 5000mm

MATERIAL / WEIGHT

92% Polyester, 8% Elastane
(3 layer Softshell fabric)
340g/m²

PACKING

Pack 1/ Carton 12

140M MEN'S SOFTSHELL JACKET SIZES XS-4XL

- » Three layers softshell material
- » Side pockets and chest pocket with inner lining, inside-out zippers and cord pulls
- » Full zip with inner storm flap and zip neck protector at collar
- » Drop tail
- » Bungee cord in hem
- » Adjustable cuffs

3XL & 4XL only available in Black, Classic Red, French Navy, Titanium, Bottle Green



140F LADIES' SOFTSHELL JACKET SIZES XS-4XL

- » Three layers softshell material
- » Side pockets and chest pocket with inner lining, inside-out zippers and cord pulls
- » Full zip with inner storm flap and zip neck protector at collar
- » Drop tail
- » Bungee cord in hem
- » Adjustable cuffs
- » Feminine Fit

3XL & 4XL only available in Black, Classic Red, French Navy, Titanium, Bottle Green



141M MEN'S SOFTSHELL GILET SIZES XS-2XL

- » Three layers softshell material
- » Side pockets and chest pocket with inner lining, inside-out zippers and cord pulls
- » Full zip with inner storm flap and zip neck protector at collar
- » Drop tail
- » Bungee cord in hem
- » Adjustable cuffs



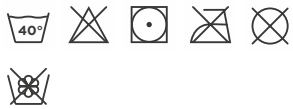
141F LADIES' SOFTSHELL GILET SIZES XS-2XL

- » Three layers softshell material
- » Side pockets and chest pocket with inner lining, inside-out zippers and cord pulls
- » Full zip with inner storm flap and zip neck protector at collar
- » Drop tail
- » Bungee cord in hem
- » Adjustable cuffs
- » Feminine Fit



SMART SOFTSHELL JACKET & GILET

040 • 041



MATERIAL / WEIGHT

100% Polyester Knitted Softshell Outer Layer,
Bonded Microfleece Inner Layer
315g/m²

PACKING

Pack 1/ Carton 12

040M MEN'S SMART SOFTSHELL JACKET SIZES XS-3XL

- » Durable Water Repellent Du Pont™ Teflon® Coating
- » Two layer softshell material without membrane
- » 2 zipped pockets
- » Inside-out zippers
- » Cadet collar
- » Drop tail
- » Protection against wind and chill
- » Higher degree of breathability
- » Microfleece lining
- » Back neck tape
- » Bound inside seams on zip
- » Headphone access



040F LADIES' SMART SOFTSHELL JACKET SIZES XS-3XL

- » Durable Water Repellent Du Pont™ Teflon® Coating
- » Two layer softshell material without membrane
- » 2 zipped pockets
- » Inside-out zippers
- » Cadet collar
- » Drop tail
- » Protection against wind and chill
- » Higher degree of breathability
- » Microfleece lining
- » Back neck tape
- » Bound inside seams on zip
- » Headphone access



041M MEN'S SMART SOFTSHELL GILET SIZES XS-3XL

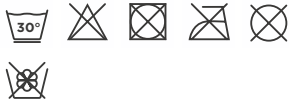
- » Durable Water Repellent Du Pont™ Teflon® Coating
- » Two layer softshell material without membrane
- » 2 zipped pockets
- » Inside-out zippers
- » Cadet collar
- » Drop tail
- » Protection against wind and chill
- » Higher degree of breathability
- » Microfleece lining
- » Back neck tape
- » Bound inside seams on zip
- » Headphone access



041M

SPORTSHELL 5000 JACKET

520



- Breathable up to 5000g/m² per 24 hours
- Windproof
- Waterproof material up to 5000mm

MATERIAL / WEIGHT

100% polyester outer, 100% polyester mesh, Advanced Softshell Fabric with Natural Stretch (3 layer bonded hydrophobic substrate) 250g/m²

PACKING

Pack 1/ Carton 12

520M MEN'S SPORTSHELL 5000 JACKET SIZES XS-2XL

- » Designed for active living: laser cut pockets with matt waterproof zips on sleeve and chest
- » Adjustable cuffs for comfort and maintenance of personal microclimate; YKK centre zipper
- » Ergonomic shape - body fit creates microclimate for maximum thermoregulation and moisture transfer
- » Discreet decoration access at inner left chest



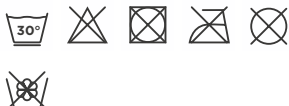
520F LADIES' SPORTSHELL 5000 JACKET SIZES XS-2XL

- » Designed for active living: laser cut pockets with matt waterproof zips on sleeve and chest
- » Adjustable cuffs for comfort and maintenance of personal microclimate; YKK centre zipper
- » Ergonomic shape - body fit creates microclimate for maximum thermoregulation and moisture transfer
- » Discreet decoration access at inner left chest



HYDRAPLUS 2000 JACKET

510



- Breathable up to 2000g/m² per 24 hours
- Windproof
- Waterproof material up to 2000mm

MATERIAL / WEIGHT

100% Nylon Taslan 190g/m²

PACKING

Pack 1/ Carton 12

510M MEN'S HYDRAPLUS 2000 JACKET SIZES XS-4XL

- » Active fit with articulated elbows and raglan sleeves
- » Inside-out YKK front zipper with cord pull; double storm flap with additional hook and loop fastener closure
- » Stowaway 3 piece hood and microfleece inner collar
- » Fully lined, with discreet concealed decoration access at hem, bungee cord in hem

3XL & 4XL only available in Black, Classic Red, French Navy and Titanium



510F LADIES' HYDRAPLUS 2000 JACKET SIZES XS-4XL

- » Active fit with articulated elbows and raglan sleeves
- » Inside-out YKK front zipper with cord pull; double storm flap with additional hook and loop fastener closure
- » Stowaway 3 piece hood and microfleece inner collar
- » Fully lined, with discreet concealed decoration access at hem, bungee cord in hem

3XL & 4XL only available in Black, Classic Red, French Navy and Titanium



HEAVY DUTY WORKWEAR T

010



MATERIAL / WEIGHT

100% Combed Ringspun Cotton
Light Oxford: 93% Cotton, 7% Viscose
180g/m²

PACKING

Pack 3/ Carton 36

010M HEAVY DUTY WORKWEAR T SIZES XS-4XL

- » Classic Fit
- » Single Jersey
- » Double layered shoulder panels and reinforced twin needle stitching at armhole
- » 1x1 rib knit collar with top stitch
- » Double layer yoke, perfect for decoration
- » Enzyme washed ringspun cotton for a softer feel and added comfort



HEAVY DUTY COLLAR & CREW NECK WORKWEAR SWEATSHIRTS

012 • 013



MATERIAL / WEIGHT

80% Combed Ringspun Cotton, 20% Polyester
300g/m²

PACKING

Pack 3/ Carton 24

012M HEAVY DUTY WORKWEAR COLLAR SWEATSHIRT SIZES XS-4XL

- » SpotShield™ stain resistant coating
- » Double layered shoulder panels for superior comfort and stability
- » Locker patch for personalisation
- » Elasticated pen holder on top sleeve
- » Plastic-coated metal buttons
- » Drop tail and compact 1x1 ribbed hem for perfect bottom fit and protection against wind and chill
- » Side darts for better fit and flexibility



013M HEAVY DUTY WORKWEAR SWEATSHIRT SIZES XS-4XL

- » SpotShield™ stain resistant coating
- » Double layered shoulder panels for superior comfort and stability
- » Locker patch for personalisation
- » Elasticated pen holder on top sleeve
- » Drop tail and compact 1x1 ribbed hem for perfect bottom fit and protection against wind and chill
- » Side darts for better fit and flexibility



WORKWEAR POLYCOTTON TWILL TROUSERS & SHORTS

001 • 002



Teflon® is a registered trademark of Du Pont used under license by INVISTA and its affiliates.

MATERIAL / WEIGHT

65% Polyester, 35% Cotton Twill
245g/m²

PACKING

Pack 1/ Carton 12

001M WORKWEAR POLYCOTTON TWILL TROUSERS

- » 2 back pockets with flaps
- » Cargo pocket on right leg
- » Small extra pocket below waistband
- » Expandable waistband for comfortable fit

SIZES

WAIST SIZES

UK (inches): 28/30/32/34/36/38/40/42/44/46/48
Europe: 44/46/48/50/52/54/56/58/60/62/64

LEG LENGTH

Ins R32/L:34,
cm R81/L:86



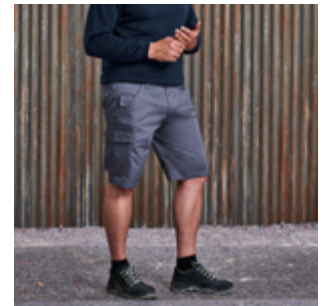
002M WORKWEAR POLYCOTTON TWILL SHORTS

- » 2 back pockets with flaps
- » Cargo pocket on right leg
- » Small extra pocket below waistband
- » Expandable waistband for comfortable fit

SIZES

WAIST SIZES

UK (inches): 28/30/32/34/36/38/40/42/44/46/48
Europe: 44/46/48/50/52/54/56/58/60/62/64



HEAVY DUTY WORKWEAR TROUSERS

015



Teflon® is a registered trademark of Du Pont used under license by INVISTA and its affiliates.

MATERIAL / WEIGHT

65% Polyester, 35% Cotton Hardwearing Canvas
260g/m²

PACKING

Pack 1/ Carton 12

015M HEAVY DUTY WORKWEAR TROUSERS

- » Teflon® fabric protector
- » 2 back pockets, one open, one with flap and hook and loop fastener
- » Cargo pockets on both legs, with practical compartments on right leg

- » Small extra pocket below waistband
- » Triple stitched inner leg seams and pocket openings triple, reinforced seat area
- » Internal pockets for knee pads (21cm x 15cm max.)
- » YKK zipper



SIZES WAIST SIZES

UK (inches): 28/30/32/34/36/38/40/42/44/46/48
Europe: 44/46/48/50/52/54/56/58/60/62/64

LEG LENGTH

Ins S:30/R32/L:34
cm S:76/R81/L:86

HEAVY DUTY WORKWEAR GILET

014



Teflon® is a registered trademark of Du Pont used under license by INVISTA and its affiliates.

MATERIAL / WEIGHT

65% Polyester, 35% Cotton Hardwearing Canvas with 5oz Polyester Wadding, 100% Polyester Inner Lining
260g/m²

PACKING

Pack 1/ Carton 12

014M HEAVY DUTY WORKWEAR GILET SIZES XS-4XL

- » Teflon® fabric protector
- » Full zip with stormflap, flexi notch at neck
- » Drop Tail, elasticated gusset at armhole, reinforced hang tag
- » Right hand side chest pocket with functional multi compartments
- » Spacious, discreet zipped decoration access at left chest



014M

HEAVY DUTY WORKWEAR SOFTSHELL JACKET

018



Breathable
up to 5000g/m² per 24 hours

Windproof

Waterproof
material up to 5000mm

MATERIAL / WEIGHT

96% polyester/4% elastane durable outer fabric with abrasion resistant textured finish, breathable, waterproof membrane, bonded microfleece lining (100%polyester with grid texture)
400g/m²

PACKING

Pack 1/ Carton 12

018M HEAVY DUTY WORKWEAR SOFTSHELL JACKET SIZES XS-4XL

- » Teflon® water repellent
- » 2 deep, zipped front pockets
- » Sturdy YKK vision front zipper with pull cord, inner storm flap and zip guard at collar
- » Black contrast panels on shoulders, elbows and back of hem
- » Ergonomic fit with articulated elbows
- » Cuffs with internal stretch insert for weather protection and comfortable fit



36 CG



018M • 014M • 014M

SIZE GUIDE

All of our measurements are based on actual “to fit” body sizes rather than the size of the garment itself.

For example, a polo shirt with a chest to fit size of 92-97cm / 36-38” will fit someone with this chest measurement; trousers with a waist to fit 50 Europe / 34”, will fit a person with this measurement.

HERE ARE SOME TIPS TO HELP YOU CHOOSE THE MOST APPROPRIATE GARMENT SIZE(S):

1

CHEST

Men: Measure around the fullest part of the chest, 2.5cm below the underarm.

Women: Measure around the fullest part of the bust.

2

COLLAR

Men: Measure around the base of the neck.

3

WAIST

All: Measure around the natural waist, keeping the measuring tape taut.

4

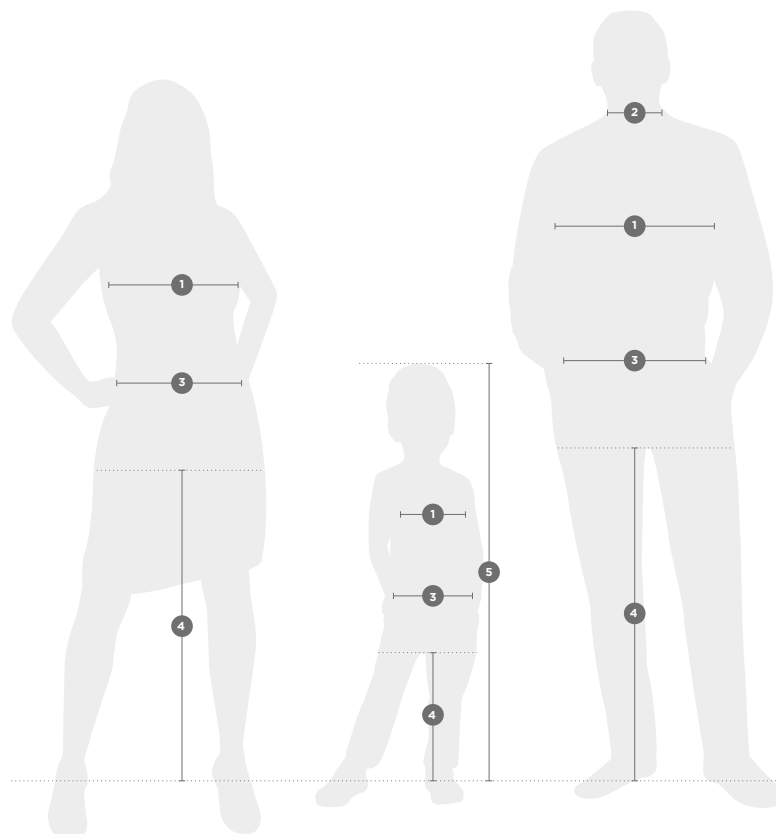
HEIGHT

Children: Standing still with feet together and flat on the floor, measure from the top of the head to the ground.

5

LEG LENGTH

All: Measure from the top of the inside leg at the crotch down to where the trousers are normally worn with shoes.



ALL PRODUCTS (excluding shirts, trousers, shorts & sweat pants)

LADIES'	XXS	XS	S	M	L	XL	2XL	3XL	4XL	5XL	6XL
DRESS SIZE											
UK	6	8	10	12	14	16	18	20	22	24	26
FRANCE	34	36	38	40	42	44	46	48	50	52	54
ITALY	38	40	42	44	46	48	50	52	54	56	58
GERMANY/EUROPE	32	34	36	38	40	42	44	46	48	50	52
CHEST TO FIT (CM)	72-77	77-82	82-87	87-92	92-97	97-102	102-107	107-112	112-117	117-122	122-127
CHEST TO FIT (INS)	28-30	30-32	32-34	34-36	36-38	38-40	40-42	42-44	44-46	46-48	48-50
DRESS SIZE											
GERMANY/EUROPE	44	46	48	50	52	54-56	56-58	58-60	62-64	66-68	70-72
CHEST TO FIT (CM)	82-87	87-92	92-97	97-102	102-107	107-112	112-117	117-122	122-127	127-132	132-137
CHEST TO FIT (INS)	32-34	34-36	36-38	38-40	40-42	42-44	44-46	46-48	48-50	50-52	52-54

SHIRTS

LADIES'	XXS	XS	S	M	L	XL	2XL	3XL	4XL	5XL	6XL
DRESS SIZE											
UK	6	8	10	12	14	16	18	20	22	24	26
FRANCE	34	36	38	40	42	44	46	48	50	52	54
ITALY	38	40	42	44	46	48	50	52	54	56	58
GERMANY/EUROPE	32	34	36	38	40	42	44	46	48	50	52
CHEST TO FIT (CM)	72-77	77-82	82-87	87-92	92-97	97-104	104-112	112-120	120-130	130-137	137-144
CHEST TO FIT (INS)	28-30	30-32	32-34	34-36	36-38	38-41	41-44	44-47	47-51	51-54	54-57
DRESS SIZE											
COLLAR TO FIT (CM)			37-38	39-40	41-42	43-44	45-46	47-48	49-50	51-52	53-54
DUAL COLLAR SIZES (INS)			14.5/15	15.5	16/16.5	17/17.5	18	18.5/19	19.5	20	21
INDIVIDUAL COLLAR SIZES (INS)			14.5 15	15.5	16 16.5	17 17.5	18	18.5 19	19.5	20	21
CHEST TO FIT (CM)			92-97	97-102	102-107	107-112	112-117	117-122	122-127	127-132	132-137
CHEST TO FIT (INS)			36-38	38-40	40-42	42-44	44-46	46-48	48-50	50-52	52-54

TROUSERS

UK (INS)	28	30	32	34	36	38	40	42	44	46	48
EUROPE	44	46	48	50	52	54	56	58	60	62	64

	SHORT	REGULAR	LONG
LEG LENGTH (CM)	76	81	86
LEG LENGTH (INS)	30	32	34

SWEAT PANTS

LADIES'	XS	S	M	L	XL
DRESS SIZE					
UK	8	10	12	14	16
WAIST TO FIT (CM)	63.5	68.5	74	79	84
WAIST TO FIT (INS)	25	27	29	31	33

MEN'S	XS	S	M	L	XL	2XL	3XL
DRESS SIZE							
WAIST TO FIT (CM)	71	76	81	86.5	91.5	96.5	101.5
WAIST TO FIT (INS)	28	30	32	34	36	38	40

ALL CHILDREN'S PRODUCTS (excluding sweat pants)

AGES (YEARS)	1-2	3-4	5-6	7-8	9-10	11-12	13-14	15-16
HEIGHT (CM)	90	104	116	128	140	152	164	176
CHEST TO FIT (CM)	51-56	56-63	63-71	71-76	76-81	81-86	86-91	91-96
CHEST TO FIT (INS)	20-22	22-25	25-28	28-30	30-32	32-34	34-36	36-38

SWEAT PANTS (children)

AGES (YEARS)	3-4	5-6	7-8	9-10	11-12
HEIGHT (CM)	104	116	128	140	152
WAIST TO FIT (CM)	47	50	53	56	62
WAIST TO FIT (INS)	18.5	20	21	22	24.5

CUFF STYLES & COLLARS



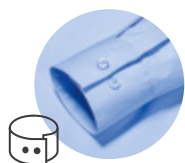
ROUNDED EDGE CUFFS

Adjustable with 2 buttons.



KENT

Perfect for business, this classic collar is named after the Duke of Kent.



SQUARE EDGE CUFFS

Adjustable with 2 buttons.



NEW KENT

Not as wide-flared as the Cutaway or as sharp-cut as the Kent collar, this modern style is stiffened, boned and suitable for embroidery.



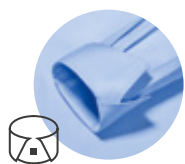
MITRED EDGE CUFFS

Adjustable with 2 buttons.



BUTTON DOWN

The modern sporty buttoned-down collar gives a smart appearance without a tie.



COCKTAIL CUFFS

These can be worn either turned or not turned, for a stylish look.



UNDER BUTTON DOWN

This type of collar is ideal for wearing without a tie and with an open collar button.



CUFF LINKS

Many shirts offer the option to wear cuff links.



LADIES

Our Ladies' Shirts feature a classic collar distinguished in style by its length and shape.

CARE SYMBOLS



30°C
machine wash
gentle cycle



30°C
machine
wash



40°C
machine wash
gentle cycle



40°C
machine
wash



50°C
machine wash
gentle cycle



50°C
machine
wash



60°C
machine
wash



No
softeners



Do not
tumble dry



Tumble dry
at low
temperature



Do not
iron



Iron at low
temperature



Iron at medium
temperature



Do not
bleach



Do not
dry clean



Dry clean,
any solvent
except trichloro-
ethylene

FEATURES & FUNCTIONS



BREATHABLE

A material's breathability is measured in terms of how many grams of water vapour pass through a square meter of fabric over 24 hours (g/m²/24h). The higher the value, the more breathable the product.



WATERPROOF

The water column test indicates how many millimetres of water a fabric can withstand before the pressure causes it to leak. Measurements above 1,500 mm are considered waterproof.



EASY CARE

A special finish ensures that the shirts and blouses are easier and quicker to iron.



SPOT SHIELD™

Fabrics with a SpotShield™ finish are resistant to water and dirt. They even repel most oils without difficulty.



COOLMAX®

COOLMAX® features outstanding moisture-regulating properties. This innovative, breathable polyester fibre wicks away moisture extremely quickly through capillary action and keeps the body drier longer.



BIONIC-FINISH® ECO

The fluorine- and PFC-free finish prevents water and dirt from sticking to the material.



LYCRA®

Lycra® is a brand name from the company Invista. It is an extremely stretchy elastane fibre with outstanding rebound properties. These textiles promise an improved fit and comfort to match.



LYCRA® T400®

This elastomultiester (LYCRA® T400®) is a modern double fibre material that can be stretched in all directions and then bounces back to its original shape. The high-quality material adapts to the movements of the wearer and always retains its shape.



TEFLON® (DUPONT™)

Teflon® coatings ensure that fabrics are resistant to water, oil and dirt. What's more, this does not have any negative impact on the weight, look, colour or breathability.



AQUAPEL™ BY NANOTEX®

Developed in order to offer reliable protection against wind and water, Aquapel™ is still breathable and at the same time features environmentally friendly fluorine- and PFC-free technology.



DUPONT™ SORONA®

The sustainable insulation with renewable plant-based materials is made with reduced energy consumption and 50% less greenhouse gas emissions.



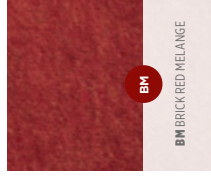
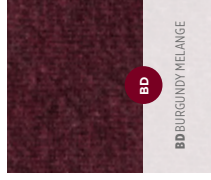
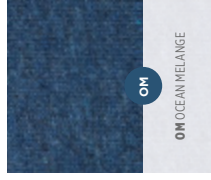
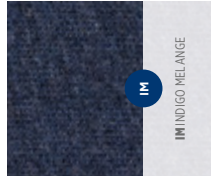
FLUOR- AND PFC-FREE

Fluorine- and PFC-free materials are more degradable, for the good of both us and the environment.

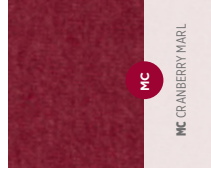
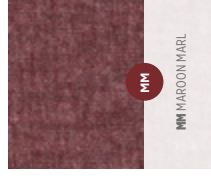
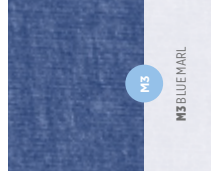
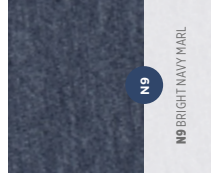
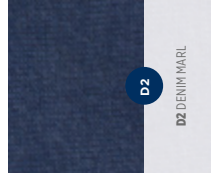
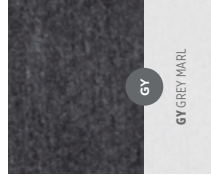
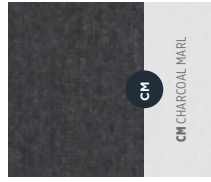
COLOUR PALETTE

 <p>CD CD CANDY PINK</p>	 <p>PD PD PURE GOLD</p>	 <p>38 38 BOTTLE GREEN</p>	 <p>CP CP CORPORATE BLUE</p>	 <p>30 30 WHITE</p>
 <p>57 57 FUCHSIA</p>	 <p>K2 K2 YELLOW</p>	 <p>AL AL APPLE</p>	 <p>ZT ZT AZTEC BLUE</p>	 <p>36 36 BLACK</p>
 <p>81 81 PURPLE</p>	 <p>LM LM LIME</p>	 <p>WL WL WINTER EMERALD</p>	 <p>ZU ZU AZURE BLUE</p>	 <p>XW XW ZINC</p>
 <p>PT PT PORT</p>	 <p>BK BKSTONE</p>	 <p>AG AG AQUA</p>	 <p>BH BH BRIGHT ROYAL</p>	 <p>TT TTITANIUM</p>
 <p>41 41 BURGUNDY</p>	 <p>60 60 NATURAL</p>	 <p>BZ BZ BRIGHT SKY</p>	 <p>NB NB BRIGHT NAVY</p>	 <p>IR IR IRON GREY</p>
 <p>CR CR CLASSIC RED</p>	 <p>3M 3M KHAKI</p>	 <p>42 42 LIGHT BLUE</p>	 <p>FN FN FRENCH NAVY</p>	 <p>CG CG CONVOY GREY</p>
 <p>BR BR BRIGHT RED</p>	 <p>CQ CQ CHOCOLATE</p>	 <p>OD OD OXFORD BLUE</p>	 <p>65 65 TURQUOISE</p>	 <p>SJ SJ SILVER</p>
 <p>44 44 ORANGE</p>	 <p>DO DO DARK OLIVE</p>	 <p>SC SC SKY</p>		 <p>LX LX LIGHT OXFORD</p>

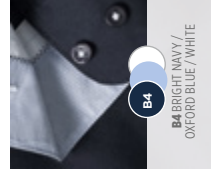
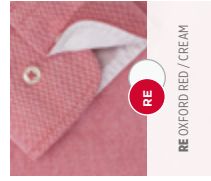
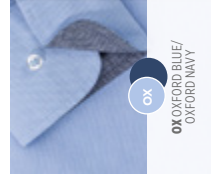
MELANGE



MARL



CONTRAST



We offer a wide range of colours. For the exact colour details visit russelleurope.com



WE  THE ORIGINAL.
EST. 1902