



# WOODPECKER

# WOODPECKER

## i-Sensor

Clearer & More Durable



Woodpecker i-Sensor Technology 4.5mm  
The i-Sensor is a high-resolution sensor that captures and processes  
data in real-time, providing a clear and accurate image of the tooth  
being scanned. The i-Sensor is made of a special material that is  
designed to be durable and resistant to wear and tear. It is also  
designed to be easy to use and maintain. The i-Sensor is a  
revolutionary new technology that will change the way we scan  
teeth. It is a must-have for any dental practice that wants to  
provide the best possible care for its patients.



## Easy-to-use software

### Smart and powerful software

Smart software easy to use software for easy-to-use smart  
management analysis, and is equipped with powerful image  
processing functions that significantly and quickly improve  
the quality of images.



One-click  
start/stop



One-click  
image processing tool

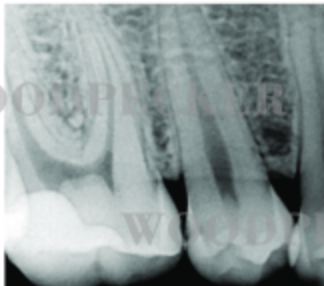


One-click  
upload and export

## High resolution imaging

### 25 lp/mm theoretical resolution

With the leading 1.8- $\mu$ m ASIC, bringing you the best image ever.  
High definition sensor up to 2.2 million pixels, more details. Better you save space with a theoretical  
resolution of 25 lp/mm, bringing a high level of clarity and detail to your digital radiography. Clearer  
image effect, so that subtlest open bifurcation can be clearly traced.



## Thinnest sensor 4.5mm

With an extremely thin sensor that is only 4.5mm  
thick, you can use the sensor in places that were  
previously impossible. The sensor is made of a special material that is  
designed to be durable and resistant to wear and tear. It is also  
designed to be easy to use and maintain. The sensor is a  
revolutionary new technology that will change the way we scan  
teeth.



Rounded Corner

## Durable and Reliable

### 80000+ bending test

With a special bending test, the sensor can be bent  
up to 80,000 times without any damage. The sensor is made of a special material that is  
designed to be durable and resistant to wear and tear. It is also  
designed to be easy to use and maintain. The sensor is a  
revolutionary new technology that will change the way we scan  
teeth.

Advanced CNC precision ultrasonic welding technology  
for high ultra-light weight sensor and IP68 protection.  
The sensor is made of a special material that is  
designed to be durable and resistant to wear and tear. It is also  
designed to be easy to use and maintain. The sensor is a  
revolutionary new technology that will change the way we scan  
teeth.



IP68