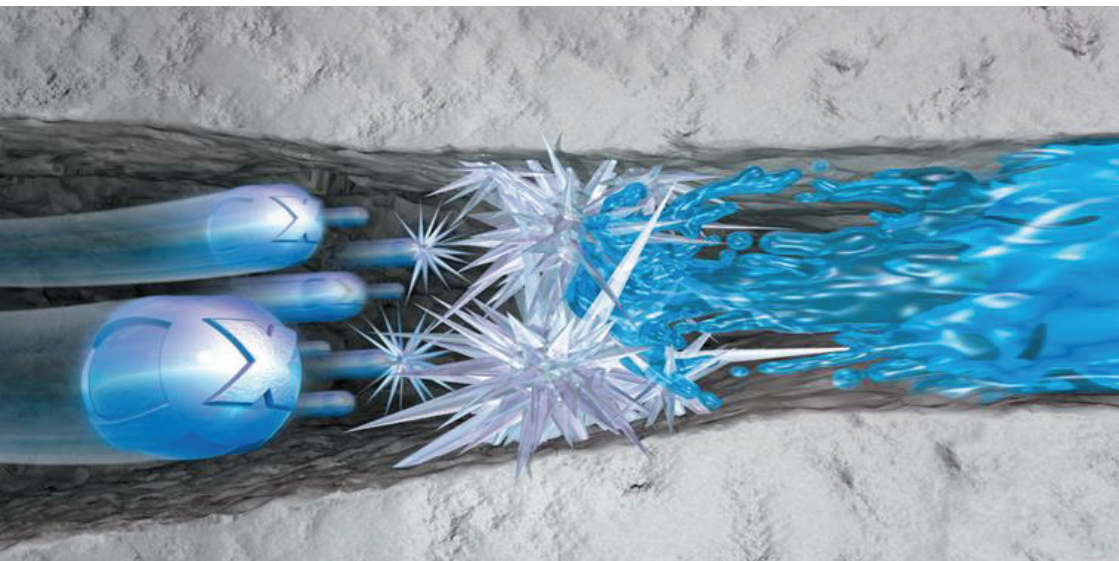
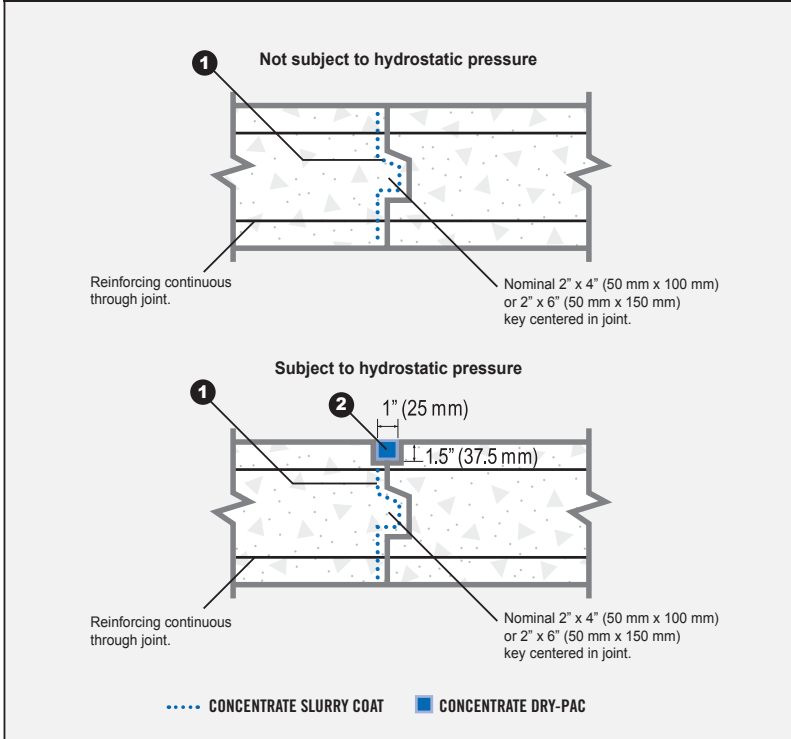


**Шематски приказ за апликација на премаз  
XYPEX Concentrate**



STANDARD CONSTRUCTION JOINT DETAILS



**Walls & Slabs**

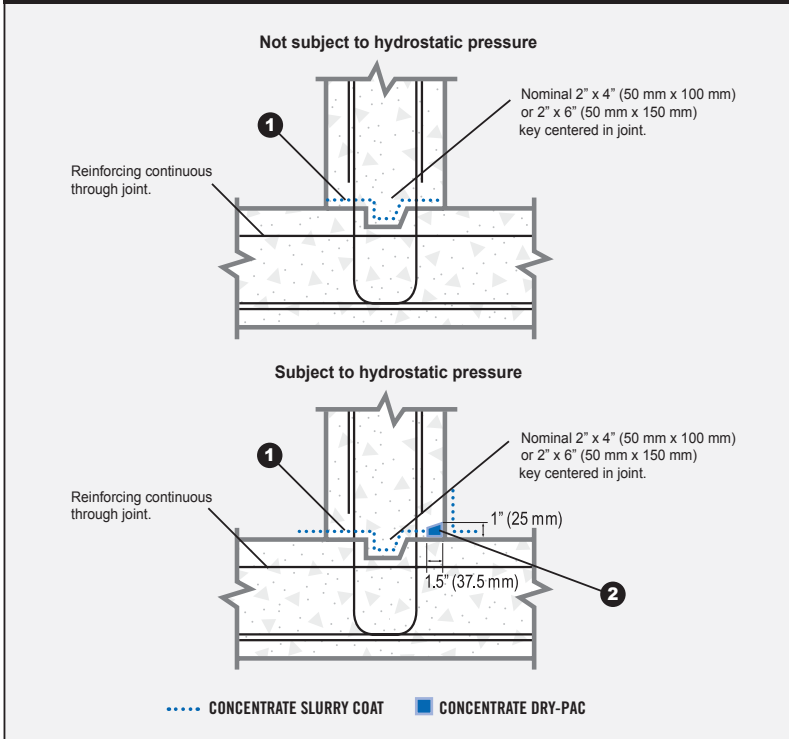
**Step 1** **Joint Waterproofing:** Clean joint thoroughly. Between pours, apply Xypex Concentrate slurry to joint surfaces at the rate of 2.0 lb./sq. yd. (1.0 kg/m<sup>2</sup>).

**Step 2** **Sealing Strip:** Clean pre-formed groove thoroughly. Apply Xypex Concentrate slurry to groove at the rate of 1.5 lb./sq. yd. (0.8 kg/m<sup>2</sup>). Fill groove with Xypex Concentrate Dry-Pac and pack tightly. Pre-formed groove may be offset to either side of joint.

**Note 1:** Schematic diagram shows Xypex application details only and does not depict standard requirements for waterstops or expansion joint sealants.

**Note 2:** Schematic drawing shows Xypex Coating application. Specifier may consider the alternative use of Xypex Dry Shake (DS-Series) or Xypex Additive (Admix C-Series), where applicable. Refer to Standard Specifications for more information.

STANDARD CONSTRUCTION JOINT DETAILS



**Walls / Slab Interface**

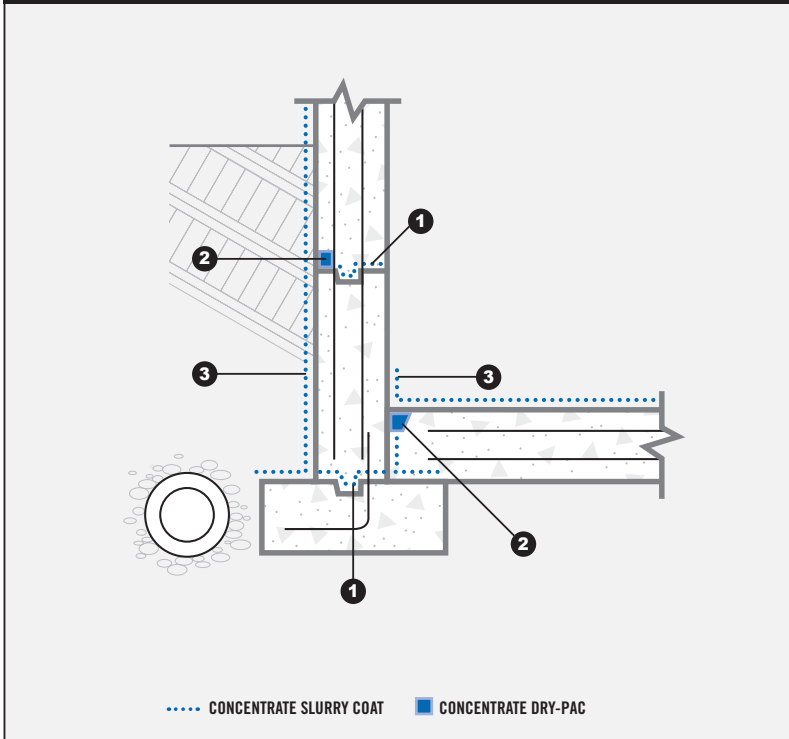
**Step 1** **Joint Waterproofing:** Clean joint thoroughly. Between pours, apply Xypex Concentrate slurry to joint surfaces at the rate of 2.0 lb./sq. yd. (1.0 kg/m<sup>2</sup>).

**Step 2** **Sealing Strip:** Clean pre-formed groove thoroughly. Apply Xypex Concentrate slurry to groove at the rate of 1.5 lb./sq. yd. (0.8 kg/m<sup>2</sup>). Fill groove with Xypex Concentrate Dry-Pac and pack tightly. Pre-formed groove may be offset to either side of joint.

**Note 1:** Schematic diagram shows Xypex application details only and does not depict standard requirements for waterstops or expansion joint sealants.

**Note 2:** Schematic drawing shows Xypex Coating application. Specifier may consider the alternative use of Xypex Dry Shake (DS-Series) or Xypex Additive (Admix C-Series), where applicable. Refer to Standard Specifications for more information.

CONCRETE WALL AND SLAB – BELOW GRADE



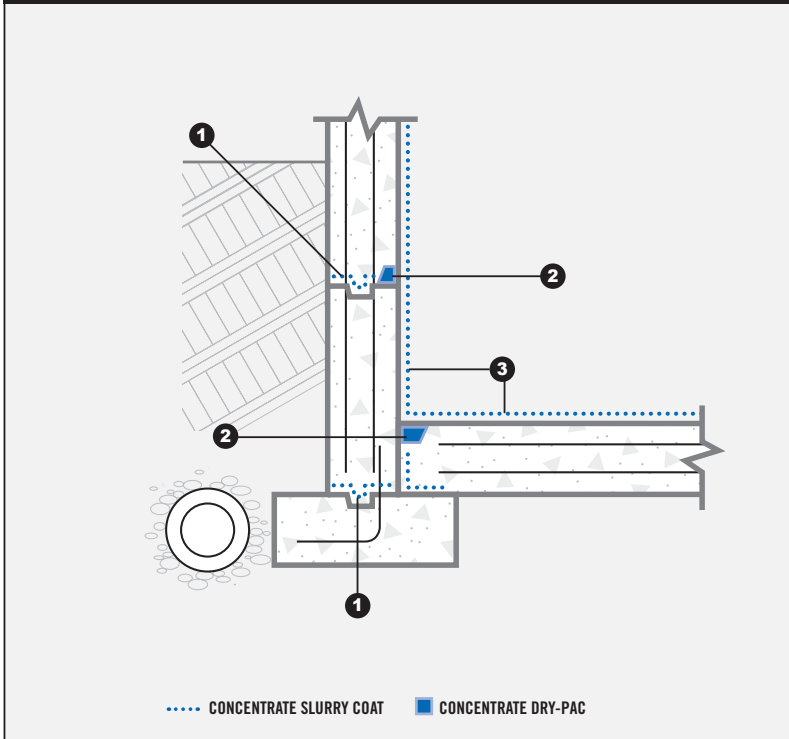
- Step 1** Between pours, apply Xypex Concentrate slurry to joint surfaces at the rate of 2.0 lb./sq. yd. (1.0 kg/m<sup>2</sup>).
- Step 2** In sealing strip, apply one slurry coat of Xypex Concentrate at the rate of 1.5 lb./sq. yd. (0.8 kg/m<sup>2</sup>) then fill slot to surface with Xypex Concentrate in Dry-Pac form.
- Step 3** Apply one coat of Xypex Concentrate to wall and slab surfaces as indicated at the rate of 1.5 lb./sq. yd. (0.8 kg/m<sup>2</sup>).

Where poor drainage conditions exist or high hydrostatic pressures are anticipated, also apply a coat of Xypex Modified to wall and slab surfaces at the rate of 1.25 - 1.5 lb./sq. yd. (0.65 - 0.8 kg/m<sup>2</sup>).

**Note 1:** Schematic diagram shows Xypex application details only and does not depict standard requirements for waterstops or expansion joint sealants.

**Note 2:** Schematic drawing shows Xypex Coating application. Specifier may consider the alternative use of Xypex Dry Shake (DS-Series) or Xypex Additive (Admix C-Series), where applicable. Refer to Standard Specifications for more information.

FOUNDATION WALL – INSIDE APPLICATION

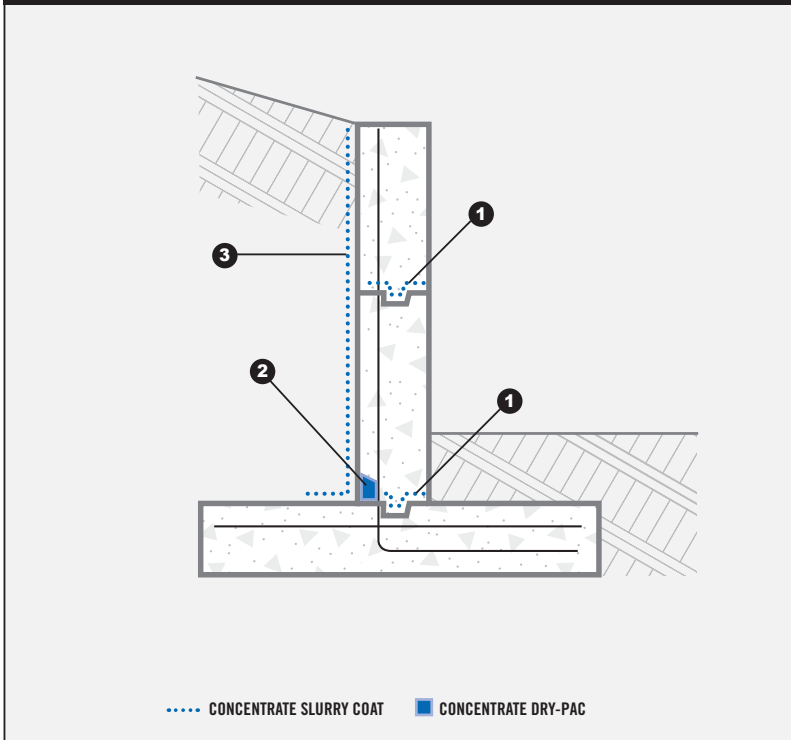


- Step 1** Between pours, apply Xypex Concentrate slurry to joint surfaces at the rate of 2.0 lb./sq. yd. (1.0 kg/m<sup>2</sup>).
- Step 2** In sealing strip, apply one slurry coat of Xypex Concentrate at the rate of 1.5 lb./sq. yd. (0.8 kg/m<sup>2</sup>), then fill slot to surface with Xypex Concentrate in Dry-Pac form.
- Step 3** Apply one slurry coat of Xypex Concentrate to wall and slab surfaces as indicated at the rate of 1.5 lb./sq. yd. (0.8 kg/m<sup>2</sup>).

Where poor drainage conditions exist or high hydrostatic pressures are anticipated, also apply a coat of Xypex Modified to wall and slab surfaces at the rate of 1.25 - 1.5 lb./sq. yd. (0.65 - 0.8 kg/m<sup>2</sup>).

**Note 1:** Schematic diagram shows Xypex application details only and does not depict standard requirements for waterstops or expansion joint sealants.

**Note 2:** Schematic drawing shows Xypex Coating application. Specifier may consider the alternative use of Xypex Dry Shake (DS-Series) or Xypex Additive (Admix C-Series), where applicable. Refer to Standard Specifications for more information.

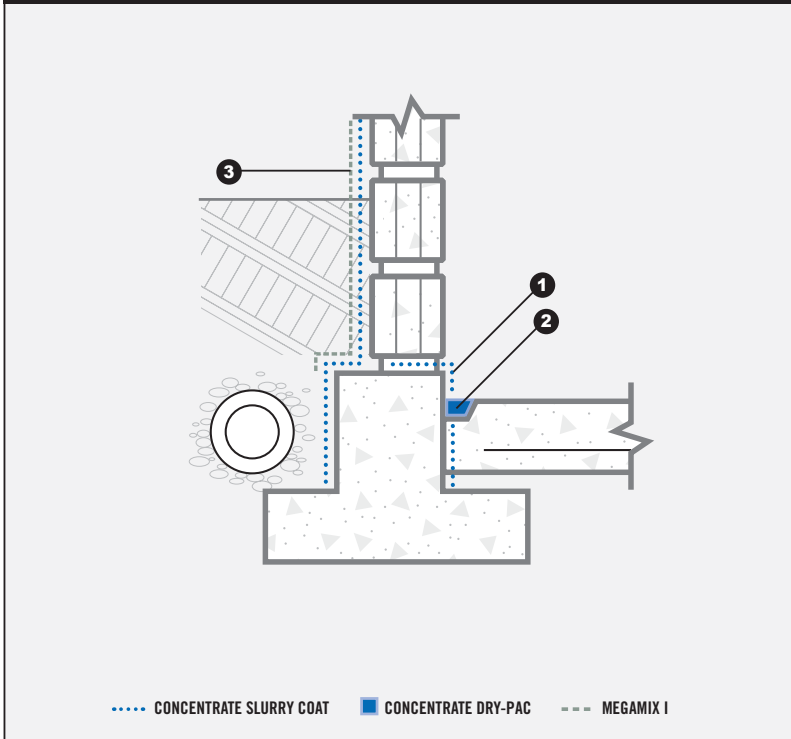


- Step 1** Between pours, apply Xypex Concentrate slurry to joint surfaces at the rate of 2.0 lb./sq. yd. (1.0 kg/m<sup>2</sup>).
- Step 2** In sealing strip, apply one slurry coat of Xypex Concentrate at the rate of 1.5 lb./sq. yd. (0.8 kg/m<sup>2</sup>), then fill slot to surface with Xypex Concentrate in Dry-Pac form.
- Step 3** Apply one coat of Xypex Concentrate to wall face and over sealing strip at the rate of 1.5 lb./sq. yd. (0.8 kg/m<sup>2</sup>).

**Note 1:** Schematic diagram shows Xypex application details only and does not depict standard requirements for waterstops or expansion joint sealants.

**Note 2:** Schematic drawing shows Xypex Coating application. Specifier may consider the alternative use of Xypex Dry Shake (DS-Series) or Xypex Additive (Admix C-Series), where applicable. Refer to Standard Specifications for more information.

**CONCRETE BLOCK WALL – BELOW GRADE – EXTERIOR APPLICATION**



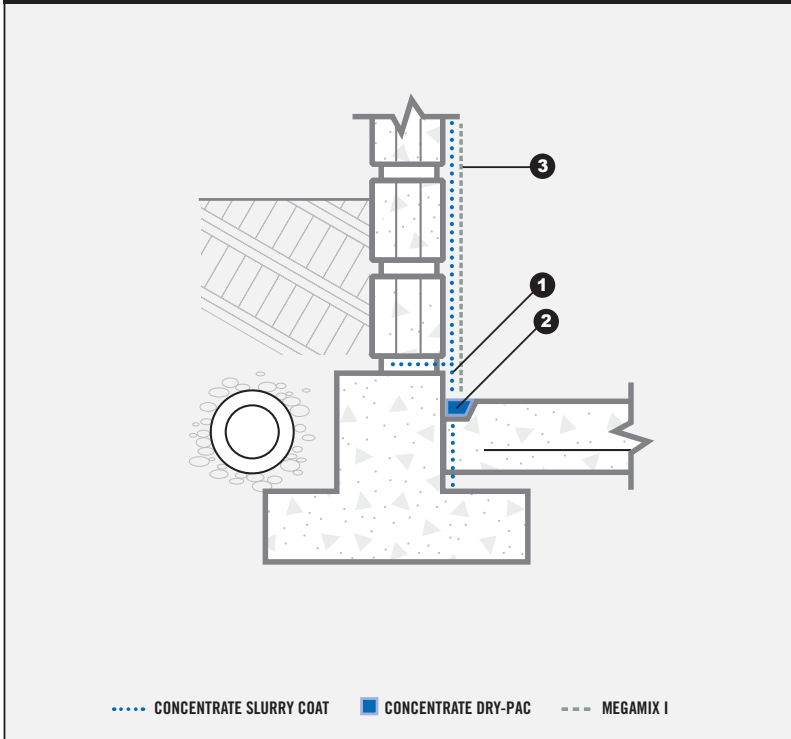
- Step 1** Prior to placement of the concrete wall and slab, apply one slurry coat of Xypex Concentrate to joint surfaces at the rate of 2 lb./sq. yd. (1 kg/m<sup>2</sup>).
- Step 2** In sealing strip, apply one slurry coat of Xypex Concentrate at the rate of 1.5 lb./sq. yd. (0.8 kg/m<sup>2</sup>), then fill slot to surface with Xypex Concentrate in Dry-Pac form.
- Step 3** To exterior wall surface and footing apply one coat of Xypex Concentrate at the rate of 2.0 lb./sq. yd. (1.0 kg/m<sup>2</sup>). After the Concentrate has set but while it is still "green", apply a coat of Xypex Megamix I at the rate of 11.25 lb./sq. yd. (5.5 kg/m<sup>2</sup>).

**Note:** Because of the variances in the quality of concrete block (e.g. cement, content, porosity, etc.), please consult your Xypex technical representative.

Schematic diagram shows Xypex coatings application only and does not depict the standard requirements for waterstops, expansion joint sealants, or pointing repairs that may be required.

Refer to Standard Specifications for further information.

**CONCRETE BLOCK WALL – BELOW GRADE – INSIDE APPLICATION**



- Step 1** Prior to placement of the concrete wall and slab, apply one slurry coat of Xypex Concentrate to joint surfaces at the rate of 2 lb./sq. yd. (1 kg/m<sup>2</sup>).
- Step 2** In sealing strip, apply one slurry coat of Xypex Concentrate at the rate of 1.5 lb./sq. yd. (0.8 kg/m<sup>2</sup>), then fill slot to surface with Xypex Concentrate in Dry-Pac form.
- Step 3** To inside wall surface apply one coat of Xypex Concentrate at the rate of 2.0 lb./sq. yd. (1.0 kg/m<sup>2</sup>). After the Concentrate has set but while it is still "green", apply a coat of Xypex Megamix I at the rate of 11.25 lb./sq. yd. (5.5 kg/m<sup>2</sup>).

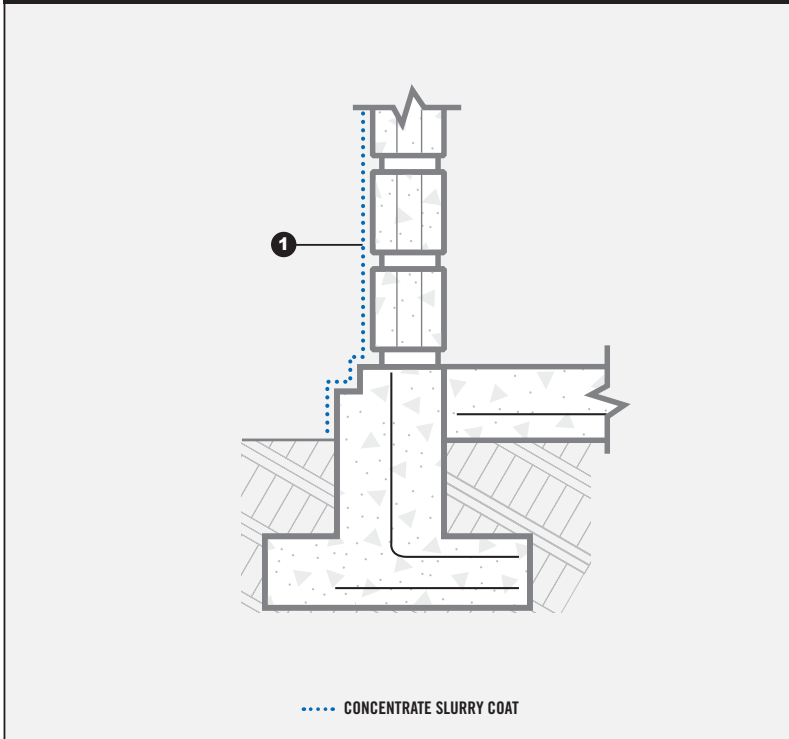
**Note:** Because of the variances in the quality of concrete block (e.g. cement, content, porosity, etc.), please consult your Xypex technical representative.

Schematic diagram shows Xypex coatings application only and does not depict the standard requirements for waterstops, expansion joint sealants, or pointing repairs that may be required.

Refer to Standard Specifications for further information.



**CONCRETE BLOCK WALL – ABOVE GRADE – EXTERIOR APPLICATION**



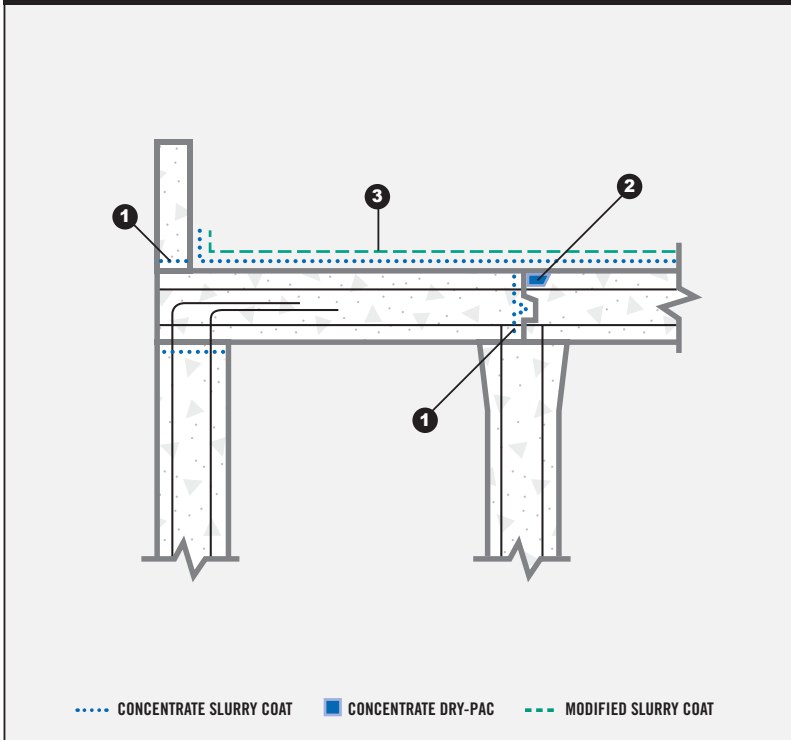
**Step 1** Apply one slurry coat of Xypex Concentrate at the rate of 1.5 lb./sq. yd. (0.8 kg/m<sup>2</sup>). Coating should extend to ground level. Where poor quality block is encountered, a second coat of Xypex Concentrate should be applied at the rate of 1.25 - 1.5 lb./sq. yd. (0.65 - 0.8 kg/m<sup>2</sup>).

Wall sections should be defined before application and each of these sections should be completed during the same day to obtain maximum uniformity in appearance.

Because of the variances in the quality of concrete block (e.g. cement content, porosity, etc.), please consult your Xypex technical representative.

**Note 1:** Schematic diagram shows Xypex application details only and does not depict standard requirements for waterstops or expansion joint sealants.

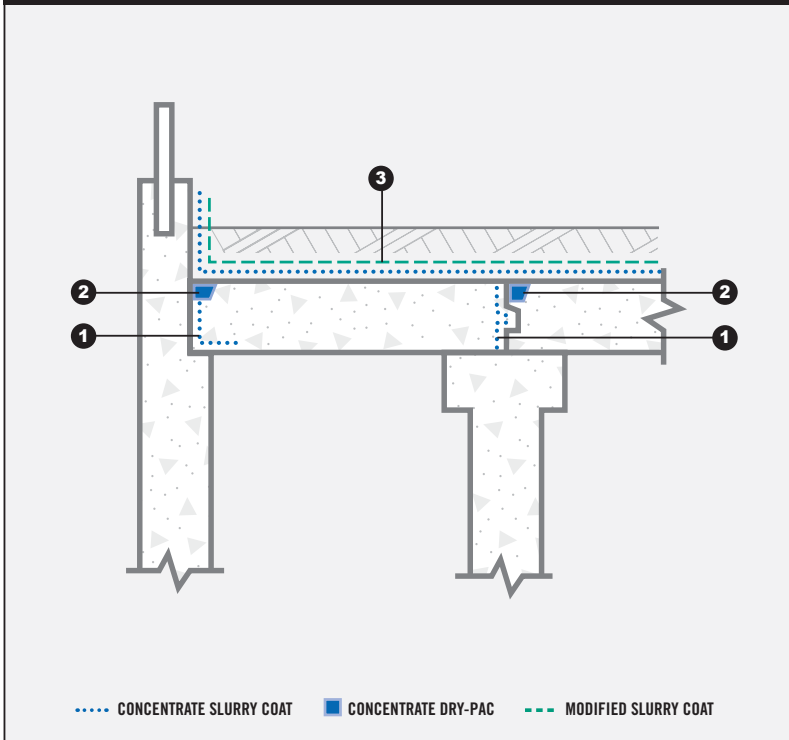
**Note 2:** Schematic drawing shows Xypex Coating application. Specifier may consider the alternative use of Xypex Dry Shake (DS-Series), Xypex Additive (Admix C-Series) or Xypex Megamix I, where applicable. Refer to Standard Specifications for more information.



- Step 1** Between pours, apply Xypex Concentrate slurry to all joint surfaces at the rate of 2.0 lb./sq. yd. (1.0 kg/m<sup>2</sup>).
- Step 2** In sealing strip, apply one coat of Xypex Concentrate at the rate of 1.5 lb./sq. yd. (0.8 kg/m<sup>2</sup>), then fill slot to surface with Xypex Concentrate in Dry-Pac form.
- Step 3** To slab, apply one coat of Xypex Concentrate at the rate of 1.25 - 1.5 lb./sq. yd. (0.65 - 0.8 kg/m<sup>2</sup>). After the Concentrate has set but while it is still "green", apply a coat of Xypex Modified at the rate of 1.25 - 1.5 lb./sq. yd. (0.65 - 0.8 kg/m<sup>2</sup>).

**Note 1:** Schematic diagram shows Xypex application details only and does not depict standard requirements for waterstops or expansion joint sealants.

**Note 2:** Schematic drawing shows Xypex Coating application. Specifier may consider the alternative use of Xypex Dry Shake (DS-Series) or Xypex Additive (Admix C-Series), where applicable. Refer to Standard Specifications for more information.



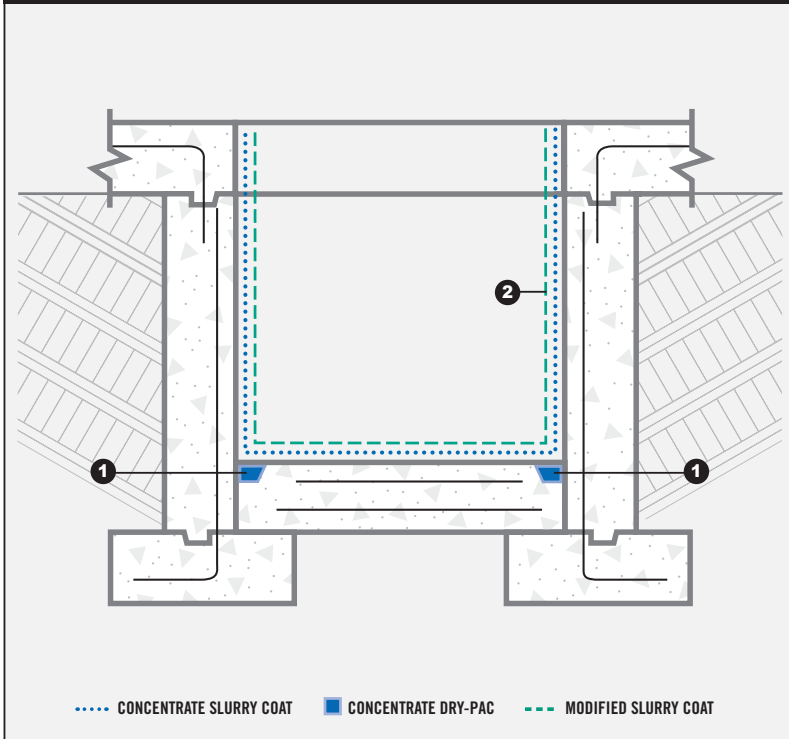
- Step 1** Between pours, apply Xypex Concentrate slurry to all joint surfaces at the rate of 2.0 lb./sq. yd. (1.0 kg/m<sup>2</sup>).
- Step 2** In sealing strip, apply one coat of Xypex Concentrate at the rate of 1.5 lb./sq. yd. (0.8 kg/m<sup>2</sup>), then fill slot to surface with Xypex Concentrate in Dry-Pac form.
- Step 3** To slab and adjacent curb wall apply one coat of Xypex Concentrate at the rate of 1.25 - 1.5 lb./sq. yd. (0.65 - 0.8 kg/m<sup>2</sup>). After the Concentrate has set but while it is still “green”, apply a coat of Xypex Modified at the rate of 1.25 - 1.5 lb./sq. yd. (0.65 - 0.8 kg/m<sup>2</sup>).

Use appropriate material for protection against sudden thermal changes.

**Note 1:** Schematic diagram shows Xypex application details only and does not depict standard requirements for waterstops or expansion joint sealants.

**Note 2:** Schematic drawing shows Xypex Coating application. Specifier may consider the alternative use of Xypex Dry Shake (DS-Series) or Xypex Additive (Admix C-Series), where applicable. Refer to Standard Specifications for more information.

ELEVATOR PIT / SUMP PIT



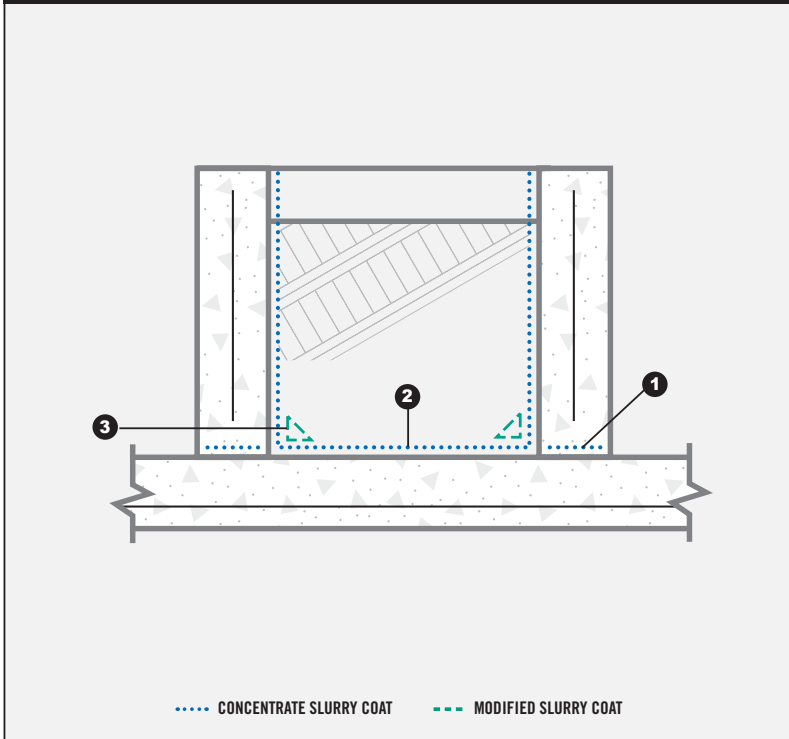
**Step 1** In sealing strip, apply one coat of Xypex Concentrate at the rate of 1.5 lb./sq. yd. (0.8 kg/m<sup>2</sup>), then fill slot to surface with Xypex Concentrate in Dry-Pac form.

**Step 2** Apply one slurry coat of Xypex Concentrate to walls and floor slab at a rate of 1.25 - 1.5 lb./sq. yd. (0.65 - 0.8 kg/m<sup>2</sup>). After the Concentrate has set but while it is still "green", apply a coat of Xypex Modified at the rate of 1.25 - 1.5 lb./sq. yd. (0.65 - 0.8 kg/m<sup>2</sup>).

For hydraulic elevators, please contact your Xypex representative for detail drawings.

**Note 1:** Schematic diagram shows Xypex application details only and does not depict standard requirements for waterstops or expansion joint sealants.

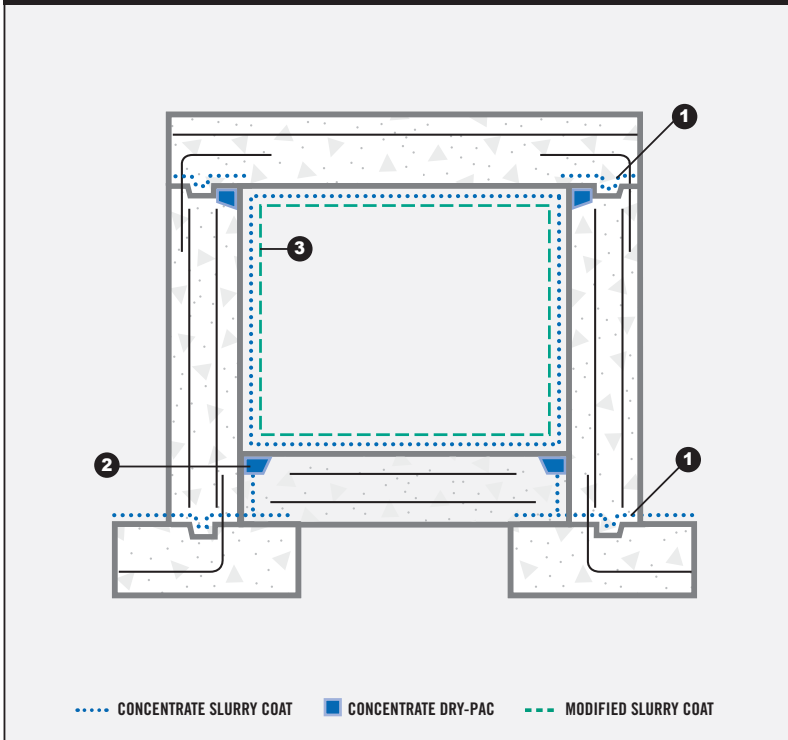
**Note 2:** Schematic drawing shows Xypex Coating application. Specifier may consider the alternative use of Xypex Dry Shake (DS-Series) or Xypex Additive (Admix C-Series), where applicable. Refer to Standard Specifications for more information.



- Step 1** Between pours, apply Xypex Concentrate slurry to all joint surfaces at the rate of 2.0 lb./sq. yd. (1.0 kg/m<sup>2</sup>).
- Step 2** Apply one slurry coat of Xypex Concentrate at the rate of 1.5 lb./sq. yd. (0.8 kg/m<sup>2</sup>) to all interior wall and floor surfaces.
- Step 3** After slurry coat has set but while it is still "green", apply a cove strip of Xypex Modified mortar over interior slab/wall construction joint.

**Note 1:** Schematic diagram shows Xypex application details only and does not depict standard requirements for waterstops or expansion joint sealants.

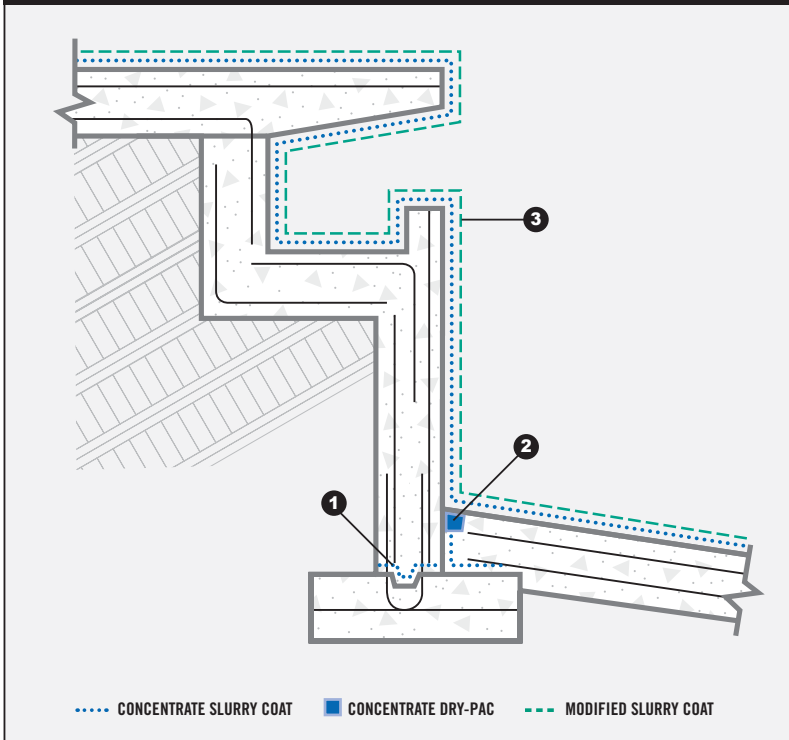
**Note 2:** Schematic drawing shows Xypex Coating application. Specifier may consider the alternative use of Xypex Dry Shake (DS-Series) or Xypex Additive (Admix C-Series), where applicable. Refer to Standard Specifications for more information.



- Step 1** Between pours, apply Xypex Concentrate slurry to all joint surfaces at the rate of 2.0 lb./sq. yd. (1.0 kg/m<sup>2</sup>).
- Step 2** In sealing strip, apply one coat of Xypex Concentrate at the rate of 1.5 lb./sq. yd. (0.8 kg/m<sup>2</sup>), then fill slot to surface with Xypex Concentrate in Dry-Pac form.
- Step 3** To all ceiling, wall, and floor surfaces, apply one slurry coat of Xypex Concentrate at the rate of 1.25 - 1.5 lb./sq. yd. (0.65 - 0.8 kg/m<sup>2</sup>). After the Concentrate has set but while it is still “green”, apply a coat of Xypex Modified at the rate of 1.25 - 1.5 lb./sq. yd. (0.65 - 0.8 kg/m<sup>2</sup>).

**Note 1:** Schematic diagram shows Xypex application details only and does not depict standard requirements for waterstops or expansion joint sealants.

**Note 2:** Schematic drawing shows Xypex Coating application. Specifier may consider the alternative use of Xypex Dry Shake (DS-Series) or Xypex Additive (Admix C-Series), where applicable. Refer to Standard Specifications for more information.

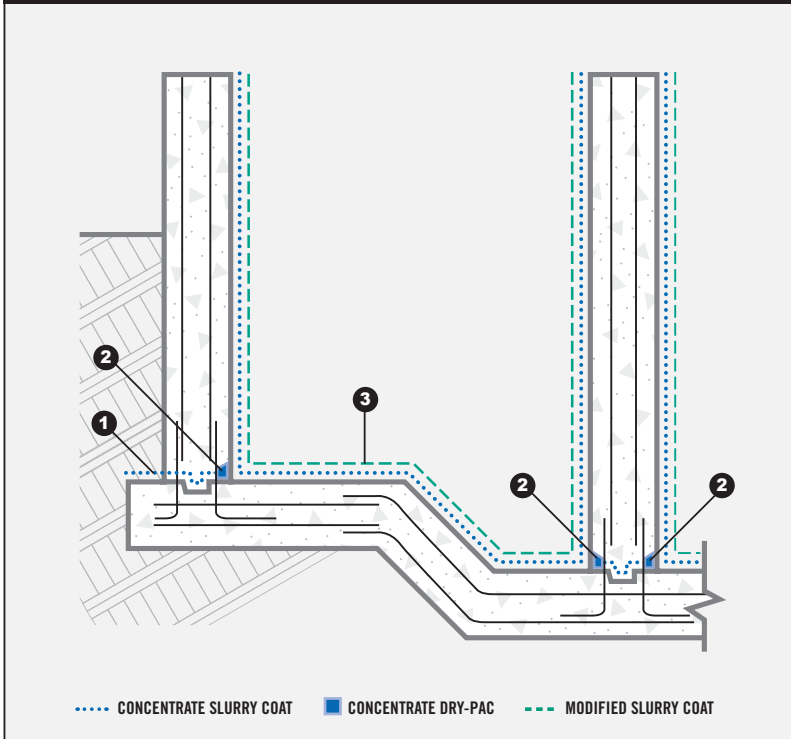


- Step 1** Between pours, apply Xypex Concentrate slurry to all joint surfaces at the rate of 2.0 lb./sq. yd. (1.0 kg/m<sup>2</sup>).
- Step 2** In sealing strip, apply one slurry coat of Xypex Concentrate at the rate of 1.5 lb./sq. yd. (0.8 kg/m<sup>2</sup>), then fill slot to surface with Xypex Concentrate in Dry-Pac form.
- Step 3** To pool deck and all interior wall and floor surfaces, apply one slurry coat of Xypex Concentrate at a rate of 1.25 - 1.5 lb./sq. yd. (0.65 - 0.8 kg/m<sup>2</sup>). After the Concentrate has set but while it is still "green", apply a coat of Xypex Modified at a rate of 1.25 - 1.5 lb./sq. yd. (0.65 - 0.8 kg/m<sup>2</sup>). In new construction, Xypex Concentrate DS-1 or Xypex Admix is recommended for pool deck and floor surfaces. Please refer to product data sheets.

**Note 1:** Schematic diagram shows Xypex application details only and does not depict standard requirements for waterstops or expansion joint sealants.

**Note 2:** Schematic drawing shows Xypex Coating application. Specifier may consider the alternative use of Xypex Dry Shake (DS-Series) or Xypex Additive (Admix C-Series), where applicable. Refer to Standard Specifications for more information.

SEWAGE PLANT CLARIFIER TANK



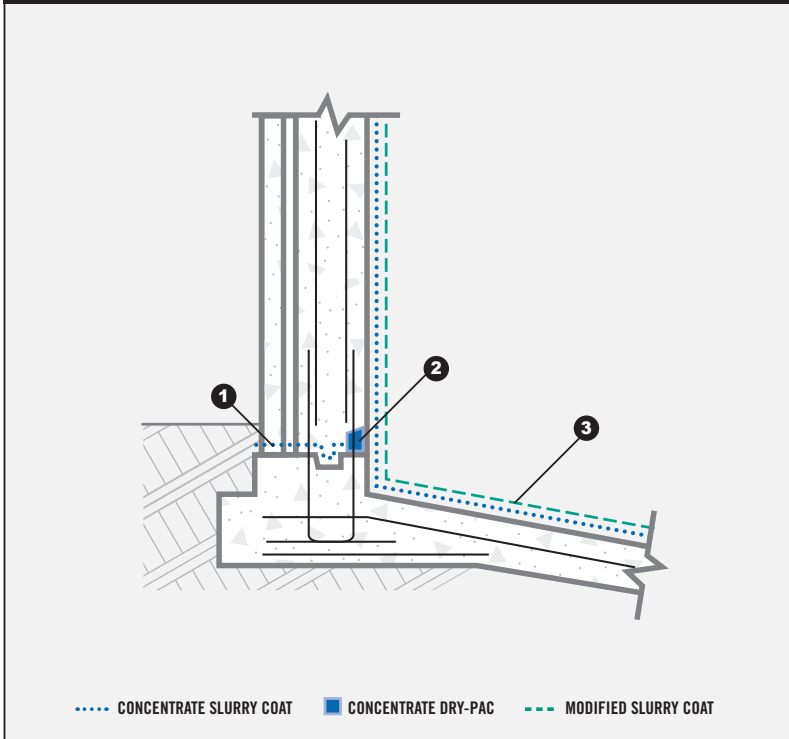
- Step 1** Between pours, apply Xypex Concentrate slurry to all joint surfaces at the rate of 2.0 lb./sq. yd. (1.0 kg/m<sup>2</sup>).
- Step 2** In sealing strip, apply one coat of Xypex Concentrate at the rate of 1.5 lb./sq. yd. (0.8 kg/m<sup>2</sup>), then fill slot to surface with Xypex Concentrate in Dry-Pac form.
- Step 3** To all ceiling, wall, and floor surfaces, apply one slurry coat of Xypex Concentrate at the rate of 1.25 - 1.5 lb./sq. yd. (0.65 - 0.8 kg/m<sup>2</sup>). After the Concentrate has set, but while it is still “green”, apply a coat of Xypex Modified at the rate of 1.25 - 1.5 lb./sq. yd. (0.65 - 0.8 kg/m<sup>2</sup>).

**Note 1:** Schematic diagram shows Xypex application details only and does not depict standard requirements for waterstops or expansion joint sealants.

**Note 2:** Schematic drawing shows Xypex Coating application. Specifier may consider the alternative use of Xypex Dry Shake (DS-Series) or Xypex Additive (Admix C-Series), where applicable. Refer to Standard Specifications for more information.



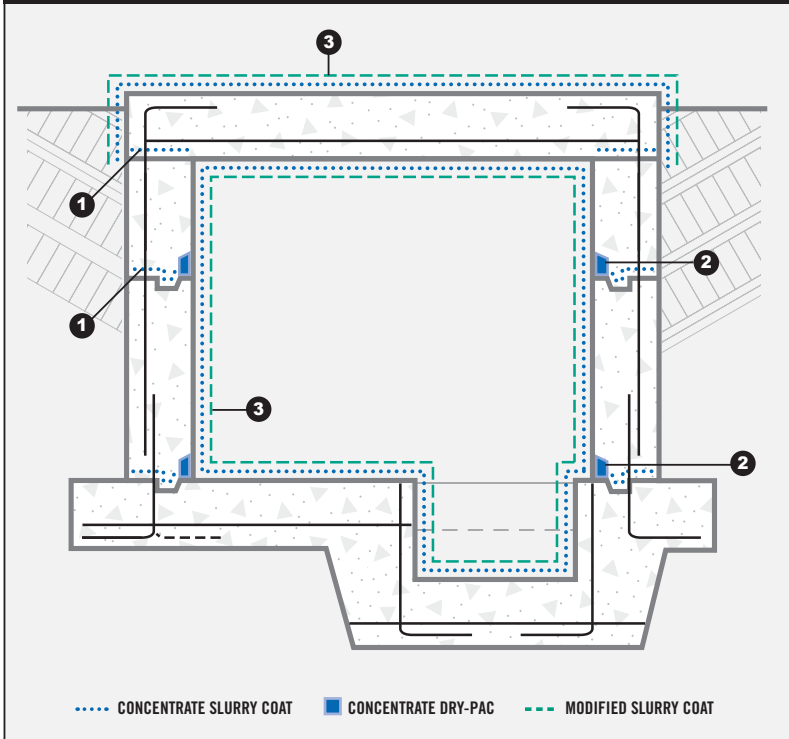
SEWAGE PLANT DIGESTER TANK



- Step 1** Between pours, apply Xypex Concentrate slurry to all joint surfaces at the rate of 2.0 lb./sq. yd. (1.0 kg/m<sup>2</sup>).
- Step 2** In sealing strip, apply one coat of Xypex Concentrate at the rate of 1.5 lb./sq. yd. (0.8 kg/m<sup>2</sup>), then fill slot to surface with Xypex Concentrate in Dry-Pac form.
- Step 3** To all wall and slab surfaces, apply one slurry coat of Xypex Concentrate at the rate of 1.25 - 1.5 lb./sq. yd. (0.65 - 0.8 kg/m<sup>2</sup>). After the Concentrate has set, but while it is still “green”, apply a coat of Xypex Modified at the rate of 1.25 - 1.5 lb./sq. yd. (0.65 - 0.8 kg/m<sup>2</sup>).

**Note 1:** Schematic diagram shows Xypex application details only and does not depict standard requirements for waterstops or expansion joint sealants.

**Note 2:** Schematic drawing shows Xypex Coating application. Specifier may consider the alternative use of Xypex Dry Shake (DS-Series) or Xypex Additive (Admix C-Series), where applicable. Refer to Standard Specifications for more information.

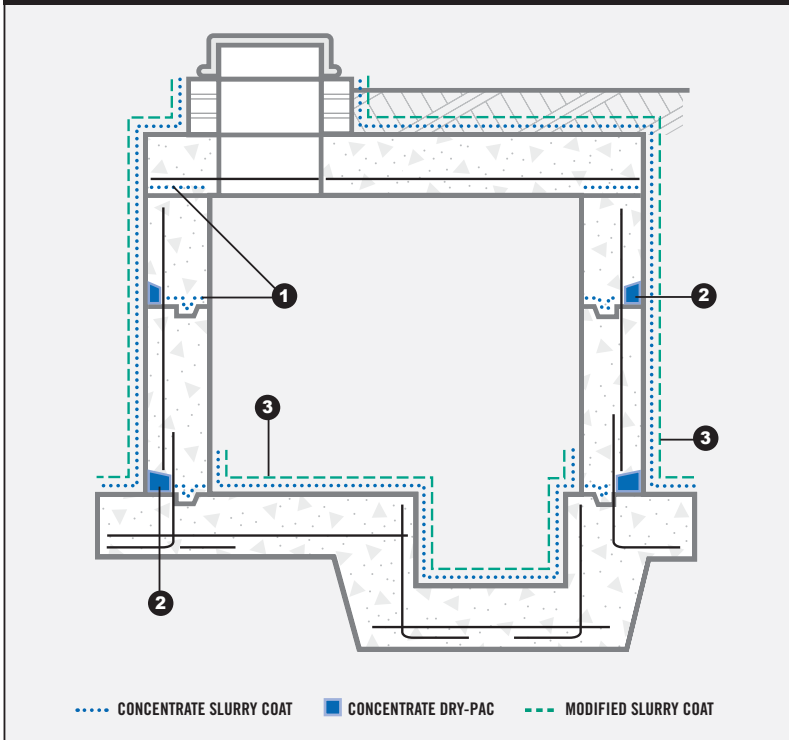


- Step 1** Between pours, apply Xypex Concentrate slurry to all joint surfaces at the rate of 2.0 lb./sq. yd. (1.0 kg/m<sup>2</sup>).
- Step 2** In sealing strip, apply one coat of Xypex Concentrate at the rate of 1.5 lb./sq. yd. (0.8 kg/m<sup>2</sup>), then fill slot to surface with Xypex Concentrate in Dry-Pac form.
- Step 3** To interior walls, slab and exterior of roof area, apply one slurry coat of Xypex Concentrate at the rate of 1.25 - 1.5 lb./sq. yd. (0.65 - 0.8 kg/m<sup>2</sup>). After the Concentrate has set, but while it is still "green", apply a coat of Xypex Modified at the rate of 1.25 - 1.5 lb./sq. yd. (0.65 - 0.8 kg/m<sup>2</sup>).

**Note 1:** Schematic diagram shows Xypex application details only and does not depict standard requirements for waterstops or expansion joint sealants.

**Note 2:** Schematic drawing shows Xypex Coating application. Specifier may consider the alternative use of Xypex Dry Shake (DS-Series) or Xypex Additive (Admix C-Series), where applicable. Refer to Standard Specifications for more information.

UNDERGROUND VAULT / DRY WELL

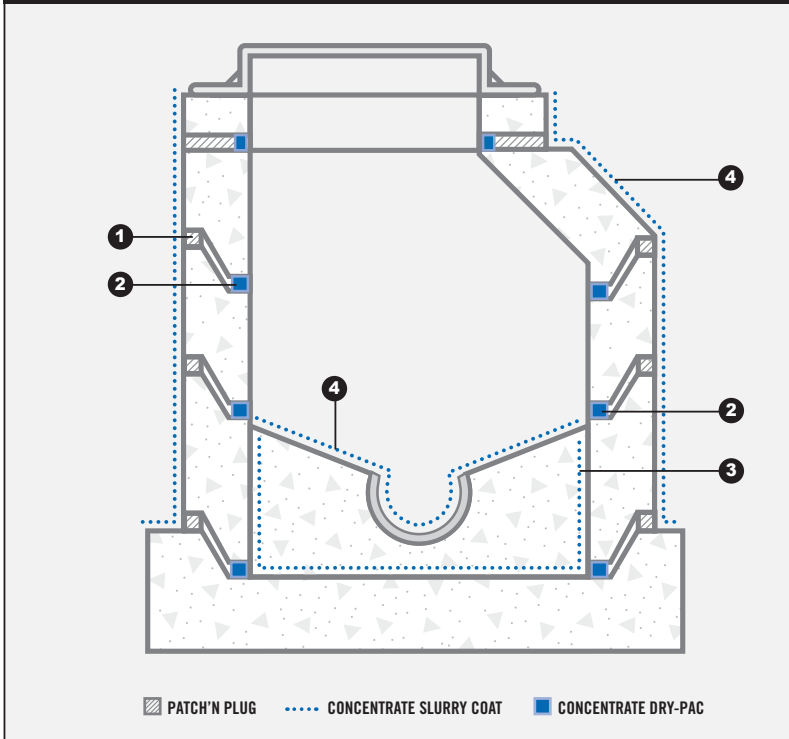


- Step 1** Between pours, apply Xypex Concentrate slurry to all joint surfaces at the rate of 2.0 lb./sq. yd. (1.0 kg/m<sup>2</sup>).
- Step 2** In sealing strip, apply one coat of Xypex Concentrate at the rate of 1.5 lb./sq. yd. (0.8 kg/m<sup>2</sup>), then fill slot to surface with Xypex Concentrate in Dry-Pac form.
- Step 3** To interior floor areas and exterior walls and roof, apply one slurry coat of Xypex Concentrate at the rate of 1.25 - 1.5 lb./sq. yd. (0.65 - 0.8 kg/m<sup>2</sup>). After the Concentrate has set, but while it is still "green", apply a coat of Xypex Modified at the rate of 1.25 - 1.5 lb./sq. yd. (0.65 - 0.8 kg/m<sup>2</sup>).

**Note 1:** Schematic diagram shows Xypex application details only and does not depict standard requirements for waterstops or expansion joint sealants.

**Note 2:** Schematic drawing shows Xypex Coating application. Specifier may consider the alternative use of Xypex Dry Shake (DS-Series) or Xypex Additive (Admix C-Series), where applicable. Refer to Standard Specifications for more information.

## PRECAST CONCRETE MANHOLE

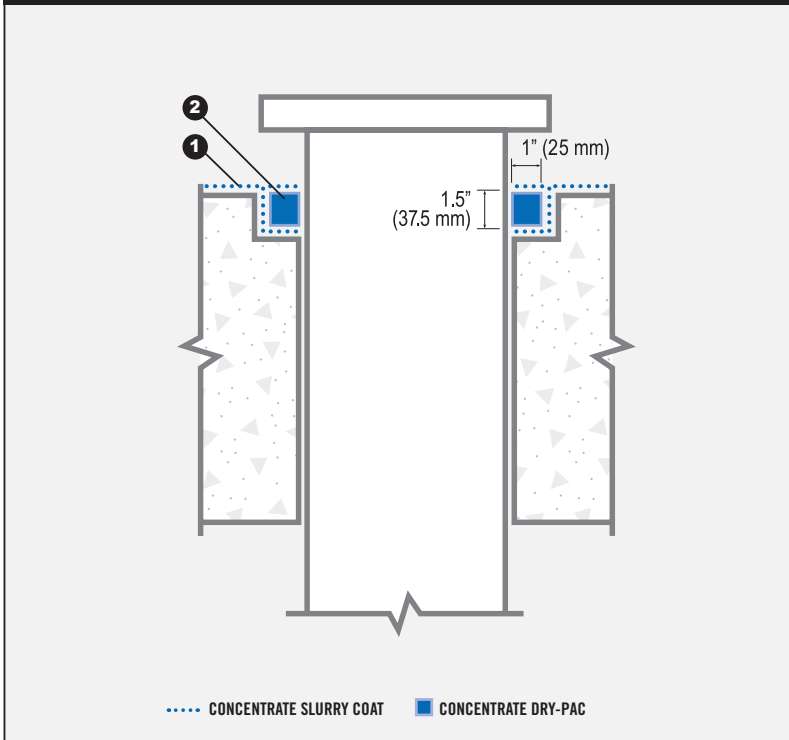


- Step 1** Place block in joints to allow 0.5 - 0.75 in. (13 - 19 mm) gap between precast sections. Fill exterior gap with Xypex Patch'n Plug grout.
- Step 2** Apply one slurry coat of Xypex Concentrate to the interior gap at the rate of 1.5 lb./sq. yd. (0.8 kg/m<sup>2</sup>), then fill gap to surface with Xypex Concentrate in Dry-Pac form.
- Step 3** Apply one slurry coat of Xypex Concentrate to interior of bottom ring, floor and exterior walls at the rate of 1.25 - 1.5 lb./sq. yd. (0.65 - 0.8 kg/m<sup>2</sup>).
- Step 4** After placement of concrete trough, apply one slurry coat of Xypex Concentrate at the rate of 1.5 lb./sq. yd. (0.8 kg/m<sup>2</sup>) to its surface.

**Note 1:** Schematic diagram shows Xypex application details only and does not depict standard requirements for waterstops or expansion joint sealants.

**Note 2:** Schematic drawing shows Xypex Coating application. Specifier may consider the alternative use of Xypex Dry Shake (DS-Series) or Xypex Additive (Admix C-Series), where applicable. Refer to Standard Specifications for more information.

STANDARD METAL PIPE DETAIL

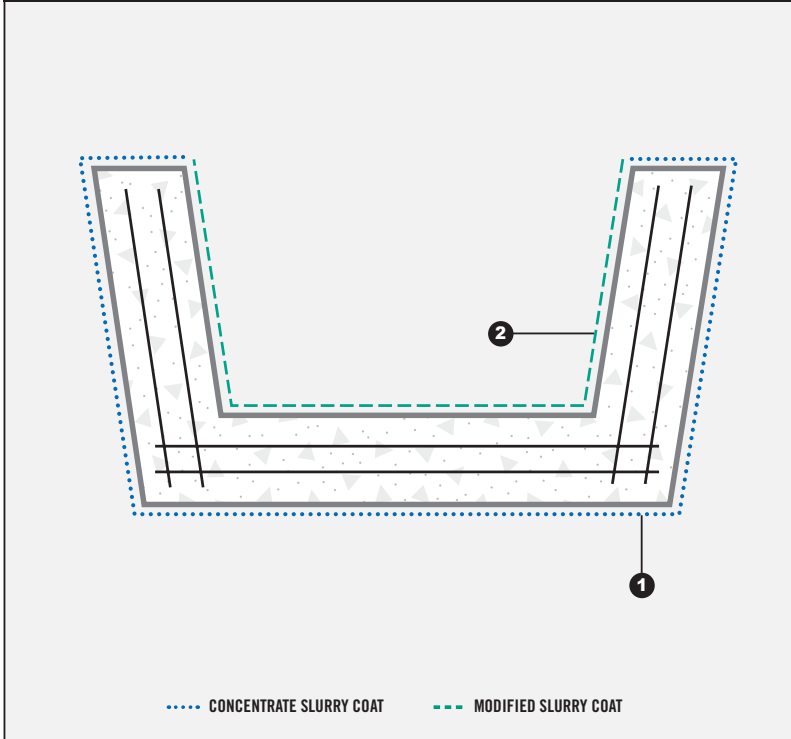


- Step 1** Apply Xypex Concentrate slurry to the groove at the rate of 1.5 lb./sq. yd. (0.8 kg/m<sup>2</sup>).
- Step 2** Fill groove to surface with Xypex Concentrate in Dry-Pac form and pack tightly. Brush Dry-Pac liberally with water and apply a Xypex Concentrate slurry over the Dry-Pac at the rate of 1.5 lb./sq. yd. (0.8 kg/m<sup>2</sup>).

**Note 1:** Schematic diagram shows Xypex application details only and does not depict standard requirements for waterstops or expansion joint sealants.

**Note 2:** Schematic drawing shows Xypex Coating application. Specifier may consider the alternative use of Xypex Dry Shake (DS-Series) or Xypex Additive (Admix C-Series), where applicable. Refer to Standard Specifications for more information.

**FERRO-CEMENT BOAT / CAISSON / FLOATING DOCK**



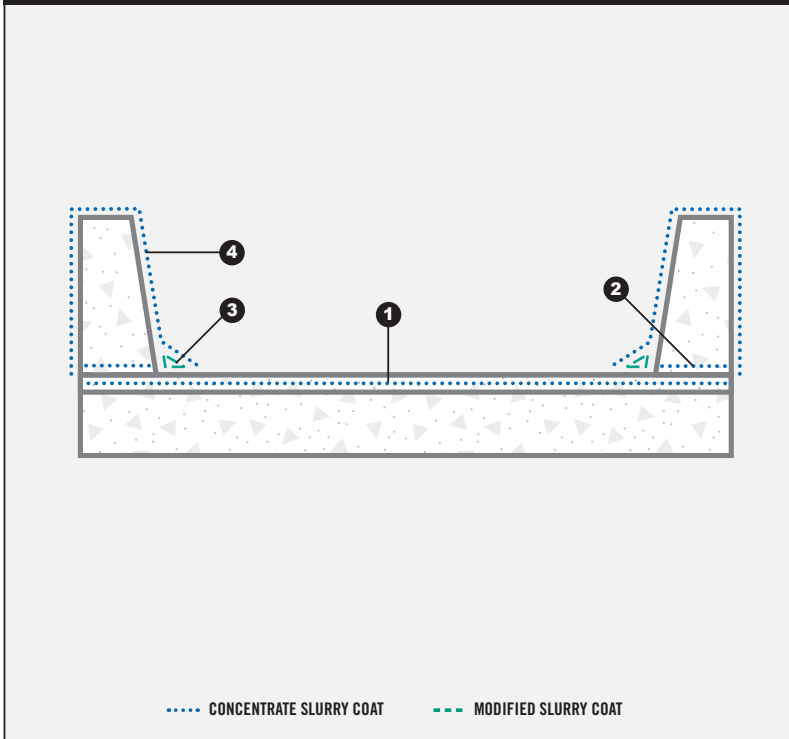
**Step 1** Apply one slurry coat of Xypex Concentrate to hull exterior, gunwhales, and all exterior decks at the rate of 1.5 lb./sq. yd. (0.8 kg/m<sup>2</sup>).

**Step 2** Apply one coat of Xypex Modified to interior surface of hull at the rate of 1.5 lb./sq. yd. (0.8 kg/m<sup>2</sup>).

In the case of sealed, hollow-core caissons, step 2 is eliminated and the Concentrate slurry coat in step 1 should extend over entire exterior of unit.

**Note 1:** Schematic diagram shows Xypex application details only and does not depict standard requirements for waterstops or expansion joint sealants.

**Note 2:** Schematic drawing shows Xypex Coating application. Specifier may consider the alternative use of Xypex Dry Shake (DS-Series) or Xypex Additive (Admix C-Series), where applicable. Refer to Standard Specifications for more information.



- Step 1** Apply one slurry coat of Xypex Concentrate to structural slab at the rate of 1.5 lb./sq. yd. (0.8 kg/m<sup>2</sup>).
- Step 2** Apply one slurry coat of Xypex Concentrate to joint surface between parapet wall and bridge deck at the rate of 2.0 lb./sq. yd. (1.0 kg/m<sup>2</sup>). Xypex must be applied no more than 24 hours prior to concrete placement.
- Step 3** Apply a cove strip of Xypex Modified mortar over slab/wall construction joint so that the cove extends 1 in. (25 mm) up the wall and 1 in. (25 mm) out on to the deck surface.
- Step 4** Apply one slurry coat of Xypex Concentrate to wall surfaces at the rate of 1.5 lb./sq. yd. (0.8 kg/m<sup>2</sup>).

**Note 1:** Schematic diagram shows Xypex application details only and does not depict standard requirements for waterstops or expansion joint sealants.

**Note 2:** Schematic drawing shows Xypex Coating application. Specifier may consider the alternative use of Xypex Dry Shake (DS-Series) or Xypex Additive (Admix C-Series), where applicable. Refer to Standard Specifications for more information.



**ЈАДРО  
ИНЖЕНЕРИНГ**