

Building infrastructure

## Efficiency and safety under one roof

Solutions for the specific requirements of building infrastructure



**Weidmüller** 

# Complete installation quickly, safely, and in accordance with standards

## Solutions for the specific requirements of building infrastructure

A large number of standards and regulations govern the building industry. As a result, high safety standards must be met for electrical installations. Due to increasing time pressures and a growing lack of trained professionals in the electrical industry, these installations also need to be completed in an ever faster, simpler, and more economical fashion. We offer you a comprehensive range of installation products and solutions for building infrastructure that are precisely tailored to these specific requirements. Our installation terminal blocks, power supplies, relays and smart metering systems, as well as lightning and surge protection devices can easily be integrated into complex distributor cabinets, even in very small spaces. Specialised features improve safety and offer you true added value in planning, installation, and operation.



3 Photovoltaics | p. 26

1 Building distribution boards | p. 4

4 e-mobility | p. 30

12



# Your benefits at a glance



## Cutting-edge

We offer you state-of-the-art products and solutions for sustainable energy generation, as well as for power distribution and building charging infrastructure.



## Practical

All of our connection technologies and connectivity solutions can be installed in a quick, space-saving, and economical fashion in everyday work. They are robust and offer long-term reliability.



## Compliant with standards

Our devices and connectivity solutions conform to all applicable standards and guidelines. They ensure the highest possible safety during installation and in operation.

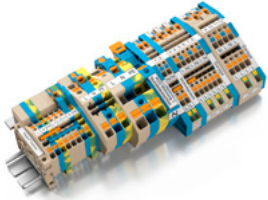


2 | **Workshop** | p. 22

# 1

## Building distribution boards

Our products and solutions for building distribution boards



### 1.1 Klippon® Connect terminal blocks

Specially developed installation terminal blocks for the unique requirements and safety specifications of wiring in buildings.

Page 6



### 1.2 Power supplies

Power supplies and auxiliary components suitable for industrial applications – from primary switched-mode power supplies to DC/DC converters and UPS control modules, to electronic fuses.

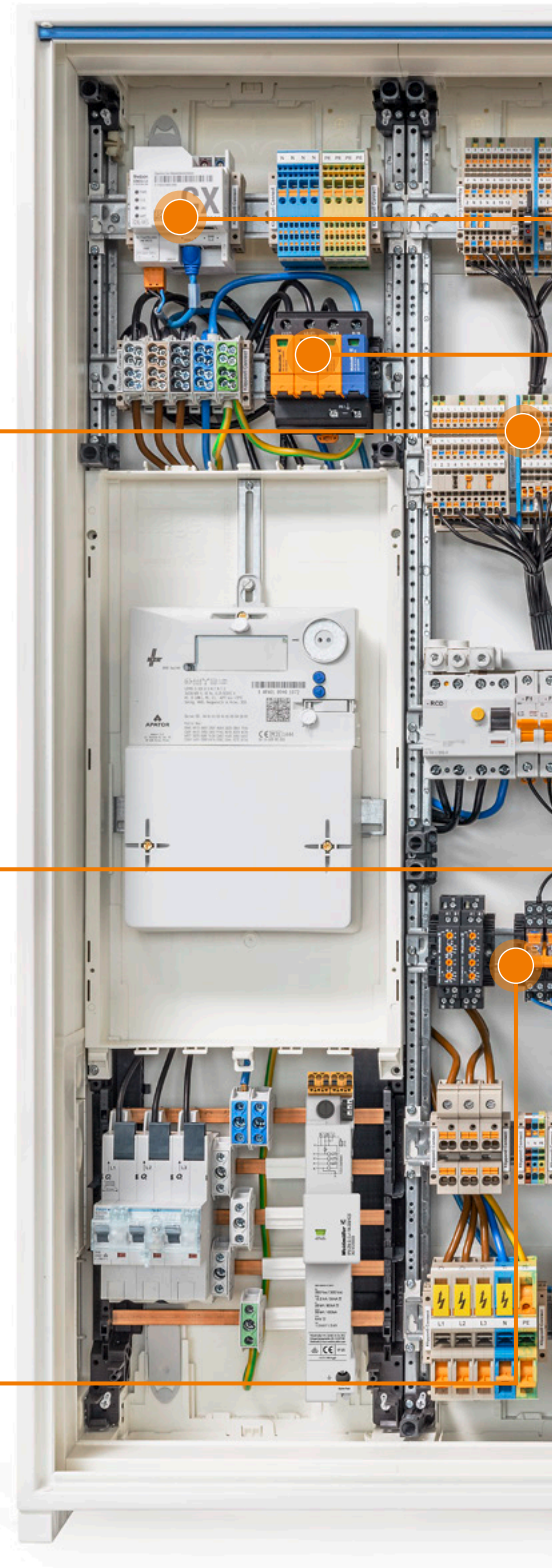
Page 12



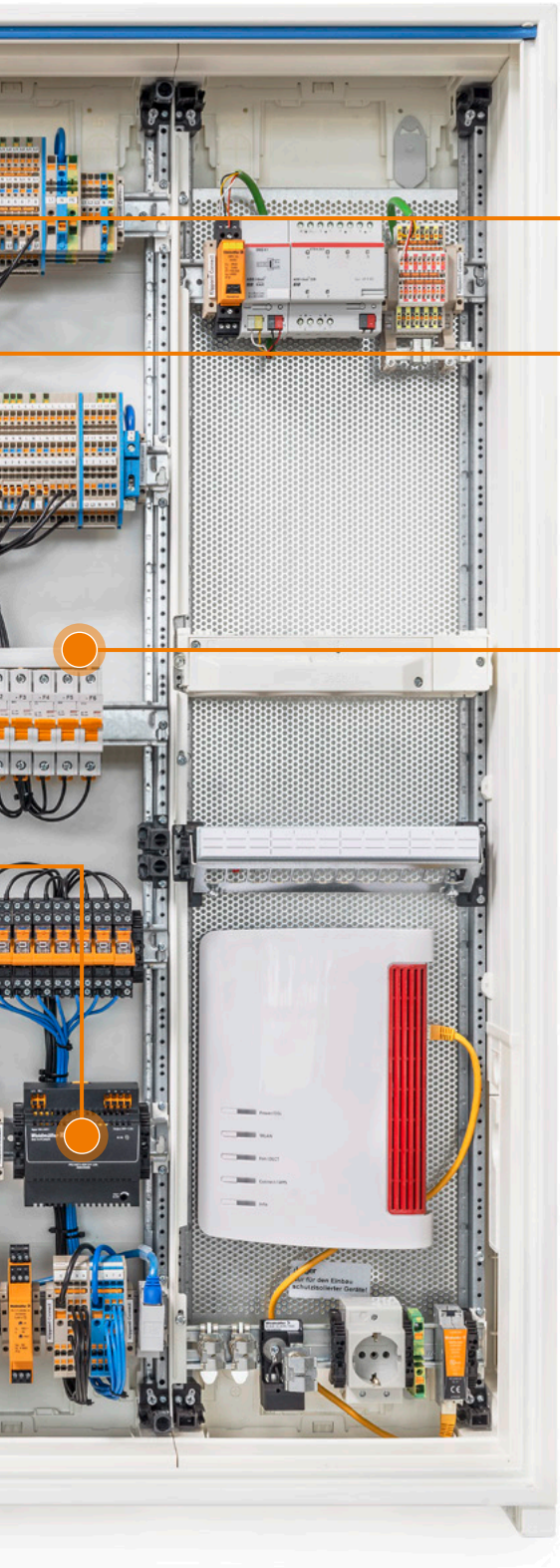
### 1.3 Klippon® Relay relay modules and solid-state relays

Reliable and durable relay modules and timing relays for the specific requirements of the building industry.

Page 14



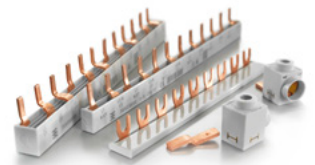




#### 1.4 VARITECTOR lightning and surge protection

Lightning and surge protection devices that conform to the standards of DIN VDE 0100-443 and -534 for mandatory surge protection in building infrastructure.

**Page 16**



#### 1.5 Phase distribution bars with pin and fork contact

For simple and safe potential distribution on circuit breakers and fault-current circuit breakers and other installation devices.

**Page 18**



#### 1.6 Smart Metering connectivity technology

Custom-tailored connectivity solutions for intelligent measurement systems and Smart Metering systems to efficiently handle the energy transition.

**Page 20**

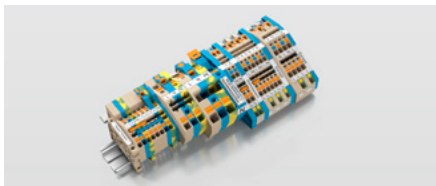


# 1.1 Klippon® Connect terminal blocks

## Compact planning – structured wiring

Installation wiring poses particular challenges in terms of the design of terminal blocks. On the one hand, solutions in this area need to be economical and compact, and on the other they also need to be easy to handle and understand. Furthermore, wiring to distribution boards and small distribution boards needs to be implemented in a very small space.

Our terminal blocks for building installation ensure you are well equipped to meet all of these requirements. The PUSH IN technology, for instance, enables us to create highly compact designs that are easy to understand. This makes it simple to carry out the wiring for your building infrastructure simply and reliably.



### AITB installation terminal blocks

- Safe disconnection of the neutral conductor
- Coloured functional areas
- Standardised test interface



### AWPD 35 potential distribution terminal block

- Compatible with the Klippon® Connect A series
- Distinct contact identification
- Standardised testing point



### WPD main line branch terminals

- Vertical and horizontal mounting options
- Connection of Aluminium conductors
- Finger safe as per EN 50274



### KNX distributor terminals A2T 1.5 KNX

- Minimal space requirements thanks to 3.5 mm installed width
- Colour coded terminals for each wire colour
- Standardised accessories



### AAP system control voltage distribution

- Up to seven connections on one terminal block
- Distinct contact identification
- Standardised testing point



### Potential distribution blocks WPD

- Unique contact designations
- Possibility to connect aluminum conductors
- Finger safety according to EN 50274





## A-Series with PUSH IN technology

Type	Rated voltage / rated current	Clamping range min. / max.	Colour	Qty.	Order No.
<b>AITB - Feed-through terminal blocks - 1 level</b>					
AITB 2.5 BB 2C	800 V / 24 A	0.14 - 4 mm <sup>2</sup>	●	50	2668660000
AITB 2.5 BB 2C BL	800 V / 24 A	0.14 - 4 mm <sup>2</sup>	●	50	2668670000
AITB 6 BB 2C	800 V / 41 A	0.34 - 10 mm <sup>2</sup>	●	50	2668700000
AITB 6 BB 2C BL	800 V / 41 A	0.34 - 10 mm <sup>2</sup>	●	50	2668710000
AITB 16 BB 2C	800 V / 76 A	0.5 - 16 mm <sup>2</sup>	●	20	2668740000
AITB 16 BB 2C BL	800 V / 76 A	0.5 - 16 mm <sup>2</sup>	●	20	2668750000
<b>Note: IEC 60947-7-1</b>					
<b>AITB - Protective earth terminal blocks - 1 level</b>					
AITB 2.5 BB 2C PE	800 V / - A	0.14 - 4 mm <sup>2</sup>	●	50	2668680000
AITB 6 BB 2C PE	800 V / - A	0.34 - 10 mm <sup>2</sup>	●	50	2668720000
AITB 16 BB 2C PE	800 V / - A	0.5 - 16 mm <sup>2</sup>	●	20	2668760000
<b>Note: IEC 60947-7-2</b>					
<b>AITB - Neutral conductor - disconnect terminal blocks - 1 level</b>					
AITB 2.5 BB NDT BL	250 V / 23 A	0.14 - 4 mm <sup>2</sup>	●	50	2668690000
AITB 6 BB NDT BL	800 V / 41 A	0.34 - 10 mm <sup>2</sup>	●	50	2668730000
AITB 16 BB NDT BL	400 V / 72 A	0.5 - 16 mm <sup>2</sup>	●	20	2668770000
AITB 16 BB NLO	Feed-in / end bracket / support bracket	TS35 terminal rail	●	20	2669140000
<b>Note: In accordance with IEC 60947-7-1</b>					
<b>AITB - distribution terminals- 3 level with busbar connection 10 x 3 mm</b>					
AITB 2.5 BB L-L	400 V / 24 A	0.14 - 4 mm <sup>2</sup>	●	50	2668900000
AITB 2.5 BB N-L	400 V / 24 A	0.14 - 4 mm <sup>2</sup>	●	50	2668910000
AITB 2.5 BB L	400 V / 24 A	0.14 - 4 mm <sup>2</sup>	●	50	2668920000
AITB 2.5 BB L-L-PE	250 V / 24 A	0.14 - 4 mm <sup>2</sup>	●	50	2668930000
AITB 2.5 BB N-L-PE	250 V / 24 A	0.14 - 4 mm <sup>2</sup>	●	50	2668940000
AITB 2.5 BB NDT-L-PE	250 V / 24 A	0.14 - 4 mm <sup>2</sup>	●	50	2668950000
AITB 4 BB L-L	400 V / 36 A	0.14 - 6 mm <sup>2</sup>	●	50	2669070000
AITB 4 BB L-L-PE	250 V / 36 A	0.14 - 6 mm <sup>2</sup>	●	50	2669080000
AITB 4 BB N-L-PE	250 V / 36 A	0.14 - 6 mm <sup>2</sup>	●	50	2669090000
AITB 4 BB NDT-L-PE	250 V / 36 A	0.14 - 6 mm <sup>2</sup>	●	50	2669100000
<b>Note: IEC 60947-7-1</b>					
<b>AITB - distribution terminals- 3 level without busbar connection 10 x 3 mm</b>					
AITB 2.5 L-L	400 V / 21 A	0.14 - 4 mm <sup>2</sup>	●	50	2669000000
AITB 2.5 L-L-PE	250 V / 21 A	0.14 - 4 mm <sup>2</sup>	●	50	2669010000
AITB 2.5 N-L-PE	250 V / 21 A	0.14 - 4 mm <sup>2</sup>	●	50	2669020000
AITB 2.5 NDT-L-PE	250 V / 21 A	0.14 - 4 mm <sup>2</sup>	●	50	2669030000
AITB 2.5 LDT-L	400 V / 21 A	0.14 - 4 mm <sup>2</sup>	●	50	2668980000
AITB 2.5 LDT-L W/O DTLV	400 V / 21 A	0.14 - 4 mm <sup>2</sup>	●	50	2668990000
AITB 2.5 LDT-L-PE	250 V / 21 A	0.14 - 4 mm <sup>2</sup>	●	50	2669040000
AITB 2.5 LDT-L-PE W/O DTLV	250 V / 21 A	0.14 - 4 mm <sup>2</sup>	●	50	2669050000
<b>Note: IEC 60947-7-1</b>					



## AITB - terminal blocks - accessories

Type	Product type	Version for	Colour	Qty.	Order No.
<b>End plates</b>					
AEP ITB 2.5 BB 2C	End plate	AITB 2.5 BB 2C	●	20	2668780000
AEP ITB 2.5 BB 2C BL	End plate	AITB 2.5 BB 2C BL	●	20	2668790000
AEP ITB 6 BB 2C	End plate	AITB 6 BB 2C	●	20	2668810000
AEP ITB 6 BB 2C BL	End plate	AITB 6 BB 2C BL	●	20	2668820000
AEP ITB 16 BB 2C	End plate	AITB 16 BB 2C	●	20	2668840000
AEP ITB 16 BB 2C BL	End plate	AITB 16 BB 2C BL	●	20	2668850000
AEP ITB 2.5 BB NDT BL	End plate	AITB 2.5 BB NDT BL	●	20	2668800000
AEP ITB 6 BB NDT BL	End plate	AITB 6 BB NDT BL	●	20	2668830000
AEP ITB 16 BB NDT BL	End plate	AITB 16 BB NDT BL	●	20	2668860000
AEP ITB 2.5 BB	End plate	AITB 2.5 BB ...	●	20	2668960000
AEP ITB 2.5	End plate	AITB 2.5 ...	●	20	2669060000
AEP ITB 4 BB	End plate	AITB 4 BB ...	●	20	2669110000
<b>Support brackets</b>					
APP ITB 2.5 BB 2C/NDT BL	Support bracket	AITB 2.5 BB NDT BL	●	20	2668870000
APP ITB 6 BB 2C/NDT BL	Support bracket	AITB 6 BB NDT BL	●	20	2668880000
APP ITB 16 BB 2C/NDT BL	Support bracket	AITB 16 BB NDT BL	●	20	2668890000
APP ITB 4 BB BL	Support bracket - installation terminals	AITB 4 BB ...	●	20	2669120000
APP ITB 2.5 BB BL	Support bracket - installation terminals	AITB 2.5 BB ...	●	20	2668970000
<b>End bracket</b>					
AEB ITB 2.5/4 BB BL	End bracket / support bracket	TS35 terminal rail	●	20	2690440000
AEB ITB 16 BB BL	End bracket / support bracket	TS35 terminal rail	●	20	2669130000
<b>Cross-connector</b>					
ZQV 2.5N/2	2-pole cross-connector	AITB 2.5 ... and AITB 2.5 BB ...	●	60	1527540000
ZQV 2.5N/10	10-pole cross-connector	AITB 2.5 ... and AITB 2.5 BB ...	●	20	1527690000
ZQV 2.5N/2 BL	2-pole cross-connector	AITB 2.5 ... and AITB 2.5 BB ...	●	60	1527740000
ZQV 2.5N/10 BL	10-pole cross-connector	AITB 2.5 ... and AITB 2.5 BB ...	●	20	1527880000
ZQV 6N/2	2-pole cross-connector	AITB 6 BB ...	●	60	1985740000
ZQV 6N/2 BL	2-pole cross-connector	AITB 6 BB ...	●	60	1985830000
ZQV 10N/2	2-pole cross-connector	AITB 16 BB ...	●	25	2497250000
ZQV 4N/2	2-pole cross-connector	AITB 4 BB ...	●	60	1527930000
ZQV 4N/10	10-pole cross-connector	AITB 4 BB ...	●	20	1528090000



## A2T - KNX terminal block

Type	Rated voltage / rated current	Clamping range min. / max.	Colour	Qty.	Order No.
A2T 1.5 KNX RD-BK	500 V / 16 A	0.14...1.5 mm <sup>2</sup>	● ●	50	2652200000
A2T 1.5 KNX WT-YL	500 V / 16 A	0.14...1.5 mm <sup>2</sup>	○ ●	50	2652210000
<b>End plates</b>					
AEP 2T 1.5	End plate	A2T 1.5	●	20	2469420000
<b>Cross-connector</b>					
ZQV 1.5N/2	2-pole cross-connector	A2T-KNX	●		1985410000
ZQV 1.5N/10	10-pole cross-connector	A2T-KNX	●		1985580000



## W-Series with clamping yoke technology

Type	Rated voltage / rated current	Clamping range min. / max.	Colour	Qty.	Order No.
<b>WDU - Feed-through terminal blocks - 1 level</b>					
WDU 2.5	800 V / 32 A	0.5 - 4 mm <sup>2</sup>	●	100	1020000000
WDU 2.5 BL	800 V / 32 A	0.5 - 4 mm <sup>2</sup>	●	100	1020080000
WDU 4	800 V / 41 A	0.5 - 6 mm <sup>2</sup>	●	100	1020100000
WDU 4 BL	800 V / 41 A	0.5 - 6 mm <sup>2</sup>	●	100	1020180000
WDU 6	800 V / 57 A	0.5 - 10 mm <sup>2</sup>	●	100	1020200000
WDU 6 BL	800 V / 57 A	0.5 - 10 mm <sup>2</sup>	●	100	1020280000
WDU 10	1000 V / 76 A	1.5 - 16 mm <sup>2</sup>	●	50	1020300000
WDU 10 BL	1000 V / 76 A	1.5 - 16 mm <sup>2</sup>	●	50	1020380000
WDU 16N	690 V / 101 A	1.5 - 16 mm <sup>2</sup>	●	50	1036100000
WDU 16N BL	690 V / 101 A	1.5 - 16 mm <sup>2</sup>	●	50	1036180000
WDU 35N	500 V / 150 A	2.5 - 35 mm <sup>2</sup>	●	20	1040400000
WDU 35N BL	500 V / 150 A	2.5 - 35 mm <sup>2</sup>	●	20	1040480000
WDU 50N	1000 V / 192 A	10...50 mm <sup>2</sup>	●	10	1820840000
WDU 50N BL	1000 V / 192 A	10 - 50 mm <sup>2</sup>	●	10	1820850000
WDU 70N/35	1000 V / 232 A	10 - 70 mm <sup>2</sup>	●	10	9512190000
WDU 70N/35 BL	1000 V / 232 A	10 - 70 mm <sup>2</sup>	●	10	9512420000
<b>Note: IEC 60947-7-1</b>					
<b>WPE - Protective earth terminal blocks - 1 level</b>					
WPE 2.5	800 V / - A	0.5 - 4 mm <sup>2</sup>	●	100	1010000000
WPE 4	800 V / - A	0.5 - 6 mm <sup>2</sup>	●	100	1010100000
WPE 6	800 V / - A	0.5 - 10 mm <sup>2</sup>	●	50	1010200000
WPE 10	1000 V / - A	1.5 - 16 mm <sup>2</sup>	●	50	1010300000
WPE 16N	400 V / - A	1.5 - 16 mm <sup>2</sup>	●	50	1019100000
WPE 35N	400 V / - A	2.5 - 35 mm <sup>2</sup>	●	20	1717740000
WPE 50N	1000 V / - A	10 - 50 mm <sup>2</sup>	●	10	1846040000
WPE 70N/35	1000 V / - A	10 - 70 mm <sup>2</sup>	●	10	9512200000
<b>Note: IEC 60947-7-2</b>					
<b>WNT - Neutral conductor - disconnect terminal blocks - 1 level</b>					
WNT 2.5 10X3	400 V / 32 A	0.5 - 4 mm <sup>2</sup>	●	100	1010680000
WNT 4 10X3	400 V / 41 A	0.5 - 6 mm <sup>2</sup>	●	100	1010780000
WNT 6 10X3	400 V / 57 A	0.5 - 10 mm <sup>2</sup>	●	50	1010880000
WNT 10 10X3	400 V / 76 A	1.5 - 16 mm <sup>2</sup>	●	50	1010980000
WNT 16N 10X3	400 V / 101 A	1.5 - 16 mm <sup>2</sup>	●	50	1019000000
WNT 35N 10X3	400 V / 150 A	2.5 - 35 mm <sup>2</sup>	●	20	1718550000
WNT 70N/35	400 V / 207 A	10 - 70 mm <sup>2</sup>	●	10	9512210000
<b>Note: IEC 60947-7-1</b>					
<b>WDL - distribution terminals- 3 level with busbar connection 10 x 3 mm</b>					
WDL 2.5/S/NT/L/PE	400 V / 32 A	0.5 - 4 mm <sup>2</sup>	● ● ●	50	1030600000
WDL 2.5/S/L/L	400 V / 32 A	0.5 - 4 mm <sup>2</sup>	●	50	1031200000
WDL 2.5/S/N	400 V / 32 A	0.5 - 4 mm <sup>2</sup>	● ●	50	1030900000
WDL 2.5/S/L	400 V / 32 A	0.5 - 4 mm <sup>2</sup>	●	50	1031300000
WDL 2.5/S/N/L	400 V / 32 A	0.5 - 4 mm <sup>2</sup>	● ●	50	1030800000
WDL 2.5/S/N/L/PE	400 V / 32 A	0.5 - 4 mm <sup>2</sup>	● ● ●	50	1030700000
WDL 2.5/S/L/L/PE	400 V / 32 A	0.5 - 4 mm <sup>2</sup>	● ●	50	1031100000
<b>Note: IEC 60947-7-1</b>					
<b>WDL - distribution terminals- 3 level without busbar connection 10 x 3 mm</b>					
WDL 2.5/NT/L/PE	400 V / 32 A	0.5 - 4 mm <sup>2</sup>	● ● ●	50	1029800000
WDL 2.5/L/L	400 V / 32 A	0.5 - 4 mm <sup>2</sup>	●	50	1030300000
WDL 2.5/N/L	400 V / 32 A	0.5 - 4 mm <sup>2</sup>	● ●	50	1030000000
WDL 2.5/N/L/PE	400 V / 32 A	0.5 - 4 mm <sup>2</sup>	● ● ●	50	1029900000
WDL 2.5/L/L/PE	400 V / 32 A	0.5 - 4 mm <sup>2</sup>	● ●	50	1030200000
<b>Note: IEC 60947-7-1</b>					



## W-Series - terminal blocks - accessories (1/2)

Type	Product type	Version for	Colour	Qty.	Order No.
<b>End plates, partitions</b>					
WAP 2.5-10	End plate	WDU, WPE 2.5 to 10	●	50	1050000000
WAP 2.5-10 BL	End plate	WDU 2.5 to 10	●	50	1050080000
WAP WDL2.5/S	End plate	WDL 2.5/S	●	20	1067700000
WAP WDL2.5	End plate	WDL 2.5	●	20	1067800000
<b>Support brackets</b>					
WHP 2.5-35N/10x3 BL	Support bracket	WNT 2.5-35	●	20	1050280000
WHP WDL2.5/S BL	Support bracket	WDL 2.5/S	●	20	1067980000





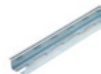
## W-Series - terminal blocks - accessories (2/ 2)

Type	Product type	Version for	Colour	Qty.	Order No.
<b>Cross-connector</b>					
WQV 2.5/2	2-pole cross-connection	WDU 2.5	●	50	1053660000
WQV 2.5/10	10-pole cross-connection	WDU 2.5	●	20	1054460000
WQV 4/2	2-pole cross-connection	WDU 4	●	50	1051960000
WQV 4/10	10-pole cross-connection	WDU 4	●	20	1052060000
WQV 6/2	2-pole cross-connection	WDU 6	●	50	1052360000
WQV 6/10	10-pole cross-connection	WDU 6	●	20	1052260000
WQV 10/2	2-pole cross-connection	WDU 10, WDK10	●	50	1052560000
WQV 10/10	10-pole cross-connection	WDU 10, WDK10	●	20	1052460000
WQV 16N/2	2-pole cross-connection	WDU 16N	●	50	1636560000
WQV 35N/2	2-pole cross-connection	WDU 35N	●	20	1079200000
WQV 50N/2	2-pole cross-connection	WDU 50N	●	5	1834060000
WQV 70N/2	2-pole cross-connection	WDU 70N	●	5	9512240000
Q 2 WDL2.5S	2-pole cross-connection	WDL 2.5 S	●	50	1071500000
Q 10 WDL2.5S	10-pole cross-connection	WDL 2.5 S	●	20	1071800000
WQV 4/2	2-pole cross-connection	WDL 2.5	●	50	1051960000
WQV 4/10	10-pole cross-connection	WDL 2.5	●	20	1052060000



## Mounting accessories terminal blocks

Type	Rated current	Dimensions (width x depth)	Material / colour	Qty.	Order No.	
<b>SSCH - busbar</b>						
SSCH 10X3X1000 CU/SN	140 A	10 x 3 mm	Tinned copper / silver	1	0348900000	
<b>Length</b>						
<b>Cover for 10x3 busbar</b>						
BB-CV AITB 3X10		300 mm	●	10	2911380000	
BB-CV AITB 3X10 BL		300 mm	●	10	2918930000	
<b>Clamping screw</b>						
<b>ZB - Clamping yoke - uninsulated</b>						
ZB 4	M3	0.5 - 6 mm <sup>2</sup>	Steel / silver	50	0316500000	
ZB 10 F.10X3/10X5/10X10	M4	1.5 - 10 mm <sup>2</sup>	Steel / silver	50	1261300000	
ZB 16 ZKSC	M4	2.5 - 16 mm <sup>2</sup>	Steel / silver	50	0316600000	
ZB 35/M6X16	M6	16 - 35 mm <sup>2</sup>	Steel / silver	20	0266500000	
<b>ZB - Clamping yoke - insulated</b>						
ZB 4K BL	M3	0.5 - 6 mm <sup>2</sup>	Steel / ●	50	0475380000	
ZB 16K BL	M4	2.5 - 16 mm <sup>2</sup>	Steel / ●	50	0502880000	
ZB 35K BL M6X16	M6	16 - 35 mm <sup>2</sup>	Steel / ●	20	0502680000	
ZB 4K GE/GN	M3	0.5 - 6 mm <sup>2</sup>	Steel / ●	50	0475360000	
ZB 16K GE/GN	M4	2.5 - 16 mm <sup>2</sup>	Steel / ●	50	0502860000	
ZB 35K GE/GN M6X16	M6	16 - 35 mm <sup>2</sup>	Steel / ●	20	0502660000	
<b>Short-circuit withstand rating</b>						
<b>TS - terminal rails - 7.5 mm height / 35 mm width</b>						
TS 35X7.5/LL 2M/ST/ZN	16 mm <sup>2</sup>	with slot	1.0 mm	Steel, galvanized, chrome-plated	2	0514500000
TS 35X7.5 2M/ST/ZN	16 mm <sup>2</sup>	without perforation	1.0 mm	Steel, galvanized, chrome-plated	2	0383400000
<b>TS - terminal rails - 15 mm height / 35 mm width</b>						
TS 35X15/LL 2M/ST/ZN	25 mm <sup>2</sup>	with slot	1.5 mm	Steel, galvanized, chrome-plated	2	0236500000
TS 35X15 2M/ST/ZN	25 mm <sup>2</sup>	without perforation	1.5 mm	Steel, galvanized, chrome-plated	2	0236400000
TS 35X15/2.3 2M/ST/ZN	50 mm <sup>2</sup>	without perforation	1.5 mm	Steel, galvanized, chrome-plated	2	0498000000
<b>Function</b>						
<b>TSTW - terminal rail carrier - FM - mounting foot</b>						
TSTW 6/M6	Angle for terminal rail mounting = 35 ° / installation with M6 thread			10	0164000000	
TSTW 5/M5	Angle for terminal rail mounting = 35 ° / installation with M5 thread			10	2725300000	
FM 4/TS35	Clip-in foot for the terminal rail / installation with M4 thread			40	2725400000	
<b>Design for / dimensions (depth x height)</b>						
<b>End bracket for terminal blocks</b>						
AEB 35 SC/1	End bracket optimised for the A-Series	Terminal rail TS 35x... / 58 x 36 mm	● / for screw fixing	50	1991920000	
WEW 35/2	End bracket optimised for the W-Series	Terminal rail TS 35x... / 56 x 46.5 mm	● / for screw fixing	50	1061200000	
WEW 35/1	End bracket optimised for the W-Series	Terminal rail TS 35x... / 56 x 62.5 mm	● / for screw fixing	50	1059000000	
ZEW 35	End bracket optimised for the Z-Series	Terminal rail TS 35x... / 55 x 40 mm	● / for screw fixing	20	9540000000	
<b>DEK - Terminal markers</b>						
DEK 5 FW 1-50	5 x 5 mm	1 - 50	○	500	0473460001	
DEK 5 FW 51-100	5 x 5 mm	51 - 100	○	500	0473460051	
DEK 5 FW 101-150	5 x 5 mm	101 - 150	○	500	0473460101	
DEK 5 FW 151-200	5 x 5 mm	151 - 200	○	500	0473460151	
DEK 5 FW 201-250	5 x 5 mm	201 - 250	○	500	0473460201	
DEK 5 FWZ 1-10	5 x 5 mm	1 - 10	○	500	0523060001	
DEK 5 FWZ 11-20	5 x 5 mm	11 - 21	○	500	0523060011	
DEK 5 FWZ 21-30	5 x 5 mm	21 - 30	○	500	0523060021	
DEK 5 FWZ 31-40	5 x 5 mm	31 - 40	○	500	0523060031	
DEK 5 FWZ 41-50	5 x 5 mm	41 - 50	○	500	0523060041	
DEK 5 FWZ L1-PE	5 x 5 mm	L1, L2, L3, N, PE	○	500	0354361187	
<b>Dimensions (height x width)</b>						
<b>EM &amp; SCHAT - group tag carrier</b>						
EM 8/30	32.4 x 7.2 mm	ESO 7... / -	transparent	50	1806120000	
ESO 7 DIN A4 WS	6.3 x 27.3 mm	Insert marker for EM 8/30 & WKM 8/30	○	10	1607720000	



## WPD - power-feed modules

Type	Rated voltage / rated current	Clamping range min. / max.	Colour	Qty.	Order No.
<b>2 connections, 1 feed-through</b>					
WPD 130 1X50/1X50 GY	1000 V / 150 A	1 x 50 / 1 x 50 mm <sup>2</sup>	●	9	2502530000
WPD 130 1X50/1X50 BL	1000 V / 150 A	1 x 50 / 1 x 50 mm <sup>2</sup>	●	9	2502540000
WPD 130 1X50/1X50 BN	1000 V / 150 A	1 x 50 / 1 x 50 mm <sup>2</sup>	●	9	2502560000
WPD 130 1X50/1X50 GN	1000 V / 150 A	1 x 50 / 1 x 50 mm <sup>2</sup>	●	9	2502550000
WPD 130 1X50/1X50 BK	1000 V / 150 A	1 x 50 / 1 x 50 mm <sup>2</sup>	●	9	2502570000
<b>2 connections, 1 feed-through + 1 x 10 mm<sup>2</sup> power supply or monitoring connection</b>					
WPD 131 1X95/1X95 GY	1000 V / 232 A	1 x 95 / 1 x 95 mm <sup>2</sup>	●	2	2503090000
WPD 131 1X95/1X95 BL	1000 V / 232 A	1 x 95 / 1 x 95 mm <sup>2</sup>	●	2	2502660000
WPD 131 1X95/1X95 BN	1000 V / 232 A	1 x 95 / 1 x 95 mm <sup>2</sup>	●	2	2502680000
WPD 131 1X95/1X95 GN	1000 V / 232 A	1 x 95 / 1 x 95 mm <sup>2</sup>	●	2	2502670000
WPD 131 1X95/1X95 BK	1000 V / 232 A	1 x 95 / 1 x 95 mm <sup>2</sup>	●	2	2502690000
<b>2 connections, 1 feed-through + 1 x 10 mm<sup>2</sup> power supply or monitoring connection</b>					
WPD 132 1X185/1X185 GY	1000 V / 353 A	1 x 185 / 1 x 185 mm <sup>2</sup>	●	1	2502750000
WPD 132 1X185/1X185 BL	1000 V / 353 A	1 x 185 / 1 x 185 mm <sup>2</sup>	●	1	2502760000
WPD 132 1X185/1X185 BN	1000 V / 353 A	1 x 185 / 1 x 185 mm <sup>2</sup>	●	1	2502780000
WPD 132 1X185/1X185 GN	1000 V / 353 A	1 x 185 / 1 x 185 mm <sup>2</sup>	●	1	2502770000
WPD 132 1X185/1X185 BK	1000 V / 353 A	1 x 185 / 1 x 185 mm <sup>2</sup>	●	1	2502790000
<b>2 connections, 1 feed-through + 1 x 10 mm<sup>2</sup> power supply or monitoring connection</b>					
WPD 133 1X300/1X300 GY	1000 V / 520 A	1 x 300 / 1 x 300 mm <sup>2</sup>	●	1	2502850000
WPD 133 1X300/1X300 BL	1000 V / 520 A	1 x 300 / 1 x 300 mm <sup>2</sup>	●	1	2502860000
WPD 133 1X300/1X300 BN	1000 V / 520 A	1 x 300 / 1 x 300 mm <sup>2</sup>	●	1	2502880000
WPD 133 1X300/1X300 GN	1000 V / 520 A	1 x 300 / 1 x 300 mm <sup>2</sup>	●	1	2502870000
WPD 133 1X300/1X300 BK	1000 V / 520 A	1 x 300 / 1 x 300 mm <sup>2</sup>	●	1	2502890000
<b>4 connections, 1 feed-through</b>					
WPD 230 2X50/2X50 GY	1000 V / 150 A	2 x 50 / 2 x 50 mm <sup>2</sup>	●	5	2502580000
WPD 230 2X50/2X50 BL	1000 V / 150 A	2 x 50 / 2 x 50 mm <sup>2</sup>	●	5	2502590000
WPD 230 2X50/2X50 BN	1000 V / 150 A	2 x 50 / 2 x 50 mm <sup>2</sup>	●	5	2502610000
WPD 230 2X50/2X50 GN	1000 V / 150 A	2 x 50 / 2 x 50 mm <sup>2</sup>	●	5	2502600000
WPD 230 2X50/2X50 BK	1000 V / 150 A	2 x 50 / 2 x 50 mm <sup>2</sup>	●	5	2502950000
<b>4 connections, 1 feed-through + 2 x 10 mm<sup>2</sup> power supply or monitoring connection</b>					
WPD 231 2X95/2X95 GY	1000 V / 232 A	1 x 95 / 1 x 95 mm <sup>2</sup>	●	1	2502700000
WPD 231 2X95/2X95 BL	1000 V / 232 A	1 x 95 / 1 x 95 mm <sup>2</sup>	●	1	2502710000
WPD 231 2X95/2X95 BN	1000 V / 232 A	1 x 95 / 1 x 95 mm <sup>2</sup>	●	1	2502730000
WPD 231 2X95/2X95 GN	1000 V / 232 A	1 x 95 / 1 x 95 mm <sup>2</sup>	●	1	2502720000
WPD 231 2X95/2X95 BK	1000 V / 232 A	1 x 95 / 1 x 95 mm <sup>2</sup>	●	1	2502740000
<b>4 connections, 1 feed-through + 2 x 10 mm<sup>2</sup> power supply or monitoring connection</b>					
WPD 232 2X185/2X185 GY	1000 V / 353 A	1 x 185 / 1 x 185 mm <sup>2</sup>	●	1	2502800000
WPD 232 2X185/2X185 BL	1000 V / 353 A	1 x 185 / 1 x 185 mm <sup>2</sup>	●	1	2502810000
WPD 232 2X185/2X185 BN	1000 V / 353 A	1 x 185 / 1 x 185 mm <sup>2</sup>	●	1	2502830000
WPD 232 2X185/2X185 GN	1000 V / 353 A	1 x 185 / 1 x 185 mm <sup>2</sup>	●	1	2502820000
WPD 232 2X185/2X185 BK	1000 V / 353 A	1 x 185 / 1 x 185 mm <sup>2</sup>	●	1	2502840000
<b>4 connections, 1 feed-through + 2 x 10 mm<sup>2</sup> power supply or monitoring connection</b>					
WPD 233 2X300/2X300 GY	1000 V / 520 A	1 x 300 / 1 x 300 mm <sup>2</sup>	●	1	2502900000
WPD 233 2X300/2X300 BL	1000 V / 520 A	1 x 300 / 1 x 300 mm <sup>2</sup>	●	1	2502910000
WPD 233 2X300/2X300 BN	1000 V / 520 A	1 x 300 / 1 x 300 mm <sup>2</sup>	●	1	2502930000
WPD 233 2X300/2X300 GN	1000 V / 520 A	1 x 300 / 1 x 300 mm <sup>2</sup>	●	1	2502920000
WPD 233 2X300/2X300 BK	1000 V / 520 A	1 x 300 / 1 x 300 mm <sup>2</sup>	●	1	2502940000
<b>6 connections, 3 feed-throughs</b>					
WPD 330 3X50/3X50 3XGY	1000 V / 150 A	3 x 50 / 3 x 50 mm <sup>2</sup>	●●●	3	2502620000
WPD 330 3X50/3X50 1XBN/1XBK/1XGY	1000 V / 150 A	3 x 50 / 3 x 50 mm <sup>2</sup>	●●●	3	2502650000
WPD 330 3X50/3X50 1XGY/1XBL/1XGN	1000 V / 150 A	3 x 50 / 3 x 50 mm <sup>2</sup>	●●●	3	2502640000
<b>Accessories</b>					
WPDPC X30 GY	Protective covers	for WPD x30	●	3	2503330000
WPDPC X31 GY	Protective covers	for WPD x31	●	3	2503370000
WPDPC X32 GY	Protective covers	for WPD x32	●	3	2503380000
WPDPC X33 GY	Protective covers	for WPD x33	●	3	2503390000
<b>Note: IEC 60947-7-1</b>					



## WPD - main line branch terminal (1/2)

Type	Rated voltage / rated current	Clamping range min. / max.	Colour	Qty.	Order No.
<b>Single block WPD 10x</b>					
WPD 101 2X25/2X16 GY	1000 V / 152 A	2 x 25 / 2 x 16 mm <sup>2</sup>	●	5	1560730000
WPD 101 2X25/2X16 BL	1000 V / 152 A	2 x 25 / 2 x 16 mm <sup>2</sup>	●	5	1560670000
WPD 101 2X25/2X16 BN	1000 V / 152 A	2 x 25 / 2 x 16 mm <sup>2</sup>	●	5	1561120000
WPD 101 2X25/2X16 GN	1000 V / 152 A	2 x 25 / 2 x 16 mm <sup>2</sup>	●	5	1560650000
WPD 101 2X25/2X16 BK	1000 V / 152 A	2 x 25 / 2 x 16 mm <sup>2</sup>	●	5	1561100000
WPD 102 2X35/2X25 GY	1000 V / 202 A	2 x 35 / 2 x 25 mm <sup>2</sup>	●	5	1561680000
WPD 102 2X35/2X25 BL	1000 V / 202 A	2 x 35 / 2 x 25 mm <sup>2</sup>	●	5	1561640000
WPD 102 2X35/2X25 BN	1000 V / 202 A	2 x 35 / 2 x 25 mm <sup>2</sup>	●	5	1561650000
WPD 102 2X35/2X25 GN	1000 V / 202 A	2 x 35 / 2 x 25 mm <sup>2</sup>	●	5	1561670000
WPD 102 2X35/2X25 BK	1000 V / 202 A	2 x 35 / 2 x 25 mm <sup>2</sup>	●	5	1561630000
WPD 103 2X70/2X50 GY	1000 V / 300 A	2 x 70 / 2 x 50 mm <sup>2</sup>	●	3	1561770000
WPD 103 2X70/2X50 BL	1000 V / 300 A	2 x 70 / 2 x 50 mm <sup>2</sup>	●	3	1561780000
WPD 103 2X70/2X50 BN	1000 V / 300 A	2 x 70 / 2 x 50 mm <sup>2</sup>	●	3	1561820000
WPD 103 2X70/2X50 GN	1000 V / 300 A	2 x 70 / 2 x 50 mm <sup>2</sup>	●	3	1561790000
WPD 103 2X70/2X50 BK	1000 V / 300 A	2 x 70 / 2 x 50 mm <sup>2</sup>	●	3	1561830000
<b>Note: IEC 60947-7-1 &amp; 61238-1</b>					





## WPD - main line branch terminal (2/2)

Type	Rated voltage / rated current	Clamping range min. / max.	Colour	Qty.	Order No.
<b>Double block WPD 20x</b>					
WPD 201 4X25/4X16 GY	1000 V / 152 A	4 x 25 / 4 x 16 mm <sup>2</sup>	●	1	2731220000
WPD 201 4X25/4X16 BL	1000 V / 152 A	4 x 25 / 4 x 16 mm <sup>2</sup>	●	1	2731230000
WPD 201 4X25/4X16 BN	1000 V / 152 A	4 x 25 / 4 x 16 mm <sup>2</sup>	●	1	2731250000
WPD 201 4X25/4X16 GN	1000 V / 152 A	4 x 25 / 4 x 16 mm <sup>2</sup>	●	1	2731240000
WPD 201 4X25/4X16 BK	1000 V / 152 A	4 x 25 / 4 x 16 mm <sup>2</sup>	●	1	2731260000
WPD 202 4x35/4x25 GY	1000 V / 202 A	4 x 35 / 4 x 25 mm <sup>2</sup>	●	2	1561730000
WPD 202 4x35/4x25 BL	1000 V / 202 A	4 x 35 / 4 x 25 mm <sup>2</sup>	●	2	1561700000
WPD 202 4x35/4x25 BN	1000 V / 202 A	4 x 35 / 4 x 25 mm <sup>2</sup>	●	2	1561720000
WPD 202 4x35/4x25 GN	1000 V / 202 A	4 x 35 / 4 x 25 mm <sup>2</sup>	●	2	1561620000
WPD 202 4x35/4x25 BK	1000 V / 202 A	4 x 35 / 4 x 25 mm <sup>2</sup>	●	2	1561690000
<b>3-way block</b>					
WPD 301 2X25/2X16 3XGY	1000 V / 152 A	2 x 25 / 2 x 16 mm <sup>2</sup>	● ● ●	2	1561130000
WPD 302 2X35/2X25 3XGY	1000 V / 202 A	2 x 35 / 2 x 25 mm <sup>2</sup>	● ● ●	2	1561740000
<b>4-way block</b>					
WPD 401 2X25/2X16 4XGY	1000 V / 152 A	2 x 25 / 2 x 16 mm <sup>2</sup>	● ● ● ●	1	1561800000
WPD 401 2X25/2X16 3XGY/1XBL	1000 V / 152 A	2 x 25 / 2 x 16 mm <sup>2</sup>	● ● ● ●	1	1562130000
<b>5-way block</b>					
WPD 501 2X25/2X16 5XGY	1000 V / 152 A	2 x 25 / 2 x 16 mm <sup>2</sup>	● ● ● ● ●	1	1561750000
WPD 501 2X25/2X16 1XGN/3XGY/1XBL	1000 V / 152 A	2 x 25 / 2 x 16 mm <sup>2</sup>	● ● ● ● ●	1	1562140000

Note: IEC 60947-7-1 & 61238-1



## WPD - sub-distribution blocks

Type	Rated voltage / rated current	Clamping range min. / max.	Colour	Qty.	Order No.
WPD 100 2X25/6X10 GY	690 V / 100 A	2 x 25 / 6 x 10 mm <sup>2</sup>	●	3	1561910000
WPD 100 2X25/6X10 BL	690 V / 100 A	2 x 25 / 6 x 10 mm <sup>2</sup>	●	3	1561920000
WPD 100 2X25/6X10 GN	690 V / 100 A	2 x 25 / 6 x 10 mm <sup>2</sup>	●	3	1561930000
WPD 100 2X25/6X10 BK	690 V / 100 A	2 x 25 / 6 x 10 mm <sup>2</sup>	●	3	2814490000
WPD 100 2X25/6X10 BN	690 V / 100 A	2 x 25 / 6 x 10 mm <sup>2</sup>	●	3	2814500000
WPD 110 1X70+1X35/6X16 GY	1000 V / 192 A	1 x 70 + 1 x 35 / 6 x 16 mm <sup>2</sup>	●	1	2603810000
WPD 110 1X70+1X35/6X16 BL	1000 V / 192 A	1 x 70 + 1 x 35 / 6 x 16 mm <sup>2</sup>	●	1	2603820000
WPD 110 1X70+1X35/6X16 GN	1000 V / 192 A	1 x 70 + 1 x 35 / 6 x 16 mm <sup>2</sup>	●	1	2603830000
WPD 110 1X70+1X35/6X16 BK	1000 V / 192 A	1 x 70 + 1 x 35 / 6 x 16 mm <sup>2</sup>	●	1	2814510000
WPD 110 1X70+1X35/6X16 BN	1000 V / 192 A	1 x 70 + 1 x 35 / 6 x 16 mm <sup>2</sup>	●	1	2814520000

Note: IEC 60998-2-1



## WPD - phase distributor blocks

Type	Rated voltage / rated current	Clamping range min. / max.	Colour	Qty.	Order No.
<b>Phase distributor block</b>					
WPD 104 1x25+1x16/2x16+3x10 GY	690 V / 101 A	1 x 25 + 1 x 16 / 2 x 16 + 3 x 10 mm <sup>2</sup>	●	1	1562000000
WPD 104 1x25+1x16/2x16+3x10 BL	690 V / 101 A	1 x 25 + 1 x 16 / 2 x 16 + 3 x 10 mm <sup>2</sup>	●	1	2518250000
WPD 105 1x35+1x16/2x25+3x16 GY	690 V / 125 A	1 x 35 + 1 x 16 / 2 x 25 + 3 x 16 mm <sup>2</sup>	●	1	1562170000
WPD 105 1x35+1x16/2x25+3x16 BL	690 V / 125 A	1 x 35 + 1 x 16 / 2 x 25 + 3 x 16 mm <sup>2</sup>	●	1	2518540000
WPD 106 1X70/2X25+3X16 GY	690 V / 160 A	1 x 70 + 1 x 16 / 2 x 25 + 3 x 16 mm <sup>2</sup>	●	1	1562210000
WPD 106 1X70/2X25+3X16 BL	690 V / 160 A	1 x 70 + 1 x 16 / 2 x 25 + 3 x 16 mm <sup>2</sup>	●	1	2518570000
WPD 107 1X95/2X35+8X25 GY	690 V / 232 A	1 x 95 + 2 x 35 / 8 x 25 mm <sup>2</sup>	●	1	1562220000
WPD 107 1X95/2X35+8X25 BL	690 V / 232 A	1 x 95 + 2 x 35 / 8 x 25 mm <sup>2</sup>	●	1	2521730000
WPD 108 1X120/2X35+3X25+4X16 GY	690 V / 250 A	1 x 120 / 2 x 35 + 3 x 25 + 4 x 16 mm <sup>2</sup>	●	1	1562100000
WPD 108 1X120/2X35+3X25+4X16 BL	690 V / 250 A	1 x 120 / 2 x 35 + 3 x 25 + 4 x 16 mm <sup>2</sup>	●	1	2519480000
WPD 109 1X185/2X35+3X25+4X16 GY	690 V / 353 A	1 x 185 / 2 x 35 + 3 x 25 + 4 x 16 mm <sup>2</sup>	●	1	1562090000
WPD 109 1X185/2X35+3X25+4X16 BL	690 V / 353 A	1 x 185 / 2 x 35 + 3 x 25 + 4 x 16 mm <sup>2</sup>	●	1	2519490000
WPD 111 1X95/4X35 GY	1000 V / 232 A	1 x 95 / 4 x 35 mm <sup>2</sup>	●	1	2603790000
WPD 111 1X95/4X35 BL	1000 V / 232 A	1 x 95 / 4 x 35 mm <sup>2</sup>	●	1	2603800000
WPD 113 1X185+1X150/8X35 GY	1000 V / 353 A	1 x 185 + 1 x 150 / 8 x 35 mm <sup>2</sup>	●	1	2603740000
WPD 113 1X185+1X150/8X35 BL	1000 V / 353 A	1 x 185 + 1 x 150 / 8 x 35 mm <sup>2</sup>	●	1	2603750000
<b>Phase distributor block, 2-way</b>					
WPD 204 2X25/4X16+6X10 2XGY	690 V / 101 A	2 x 25 + 2 x 16 / 4 x 16 + 6 x 10 mm <sup>2</sup>	● ●	1	1562150000
WPD 204 2X25/4X16+6X10 2XBL	690 V / 101 A	2 x 25 + 2 x 16 / 4 x 16 + 6 x 10 mm <sup>2</sup>	● ●	1	2518330000
WPD 205 2X35/4X25+6X16 2XGY	690 V / 125 A	2 x 35 + 2 x 16 / 4 x 25 + 6 x 16 mm <sup>2</sup>	● ●	1	1562180000
WPD 205 2X35/4X25+6X16 2XBL	690 V / 125 A	2 x 35 + 2 x 16 / 4 x 25 + 6 x 16 mm <sup>2</sup>	● ●	1	2519470000
<b>Phase distributor block, 3-way</b>					
WPD 304 3X25/6X16+9X10 3XGY	690 V / 101 A	3 x 25 + 3 x 16 / 6 x 16 + 9 x 10 mm <sup>2</sup>	● ● ●	1	1562160000
WPD 304 3X25/6X16+9X10 3XBL	690 V / 101 A	3 x 25 + 3 x 16 / 6 x 16 + 9 x 10 mm <sup>2</sup>	● ● ●	1	2518340000
WPD 305 3X35/6X25+9X16 3XGY	690 V / 125 A	3 x 35 + 3 x 16 / 6 x 25 + 9 x 16 mm <sup>2</sup>	● ● ●	1	1562190000
WPD 305 3X35/6X25+9X16 3XBL	690 V / 125 A	3 x 35 + 3 x 16 / 6 x 25 + 9 x 16 mm <sup>2</sup>	● ● ●	1	2521770000

Note: IEC 60947-7-1



## WBBD - Busbar connections

Type	Rated voltage / rated current	Clamping range min. / max.	Colour	Qty.	Order No.
WBBD 16 GY	690 V / 114 A	1 - 16 mm <sup>2</sup>	●	12	2603840000
WBBD 16 BL	690 V / 114 A	1 - 16 mm <sup>2</sup>	●	12	2603850000
WBBD 16 GN	690 V / 114 A	1 - 16 mm <sup>2</sup>	●	12	2603860000

Note: IEC 60947-7-1





**EN54-4**  
for fire alarm  
systems

# 1.2 Power supplies

## Continuous power supply for building and machinery

Often, many small distribution boards, metering cabinets, and electrical distributors are used in building automation and in machine construction. Economical power supply solutions with high power density and high efficiency are important in this application. With a unique combination of a particularly narrow design, proven PUSH IN wire connection, and high cost-efficiency, INSTA POWER has decisive

advantages over competing products on the market. We have designed our PROeco series to be particularly efficient. Thanks to their small installed depth of 120 mm maximum, the devices integrate seamlessly even into flat control cabinets. They likewise offer up to 50% narrower widths. Despite their very compact format, they retain all basic functions.



### INSTA POWER switched-mode power supplies – compact, highly efficient, and reliable.

- Available in nine variations with 5, 12, 24, and 48 V DC output voltage.
- Suitable for universal use thanks to international approvals (such as cCSAus, Cl.1, Div.2, NEC Class 2)
- Designed for flexible mounting on terminal rails or the control cabinet wall
- Quick installation with PUSH IN connection system



### PROeco – outstanding power on a small budget

- More sustainable efficiency thanks to a high effectiveness of up to 93% and low no-load loss
- Reliability in a wide temperature range of -25 °C to +70 °C and with a high MTBF value of > 500,000 h
- Quick status diagnosis using tri-coloured LED display and integrated status relay



## PRO INSTA - switched-mode power supplies

Type	Rated control voltage	AC input voltage range	Clamping range min. / max.	Input / output	Qty.	Order No.
PRO INSTA 30W 5V 6A	5 V DC / 6 A	85 - 264 V AC	0.25...2.5 / 0.25...2.5 mm <sup>2</sup>	PUSH IN	1	2580210000
PRO INSTA 30W 12V 2.6A	12 V DC / 2.6 A	85 - 264 V AC	0.25...2.5 / 0.25...2.5 mm <sup>2</sup>	PUSH IN	1	2580220000
PRO INSTA 60W 12V 5A	12 V DC / 5 A	85 - 264 V AC	0.25...2.5 / 0.25...2.5 mm <sup>2</sup>	PUSH IN	1	2580240000
PRO INSTA 16W 24V 0.7A	24 V DC / 0.7 A	85 - 264 V AC	0.25...2.5 / 0.25...2.5 mm <sup>2</sup>	PUSH IN	1	2580180000
PRO INSTA 30W 24V 1.3A	24 V DC / 1.3 A	85 - 264 V AC	0.25...2.5 / 0.25...2.5 mm <sup>2</sup>	PUSH IN	1	2580190000
PRO INSTA 60W 24V 2.5A	24 V DC / 2.5 A	85 - 264 V AC	0.25...2.5 / 0.25...2.5 mm <sup>2</sup>	PUSH IN	1	2580230000
PRO INSTA 90W 24V 3.8A	24 V DC / 3.8 A	85 - 264 V AC	0.25...2.5 / 0.25...2.5 mm <sup>2</sup>	PUSH IN	1	2580250000
PRO INSTA 96W 24V 4A	24 V DC / 4 A	85 - 264 V AC	0.25...2.5 / 0.25...2.5 mm <sup>2</sup>	PUSH IN	1	2580260000
PRO INSTA 96W 48V 2A	48 V DC / 2 A	85 - 264 V AC	0.25...2.5 / 0.25...2.5 mm <sup>2</sup>	PUSH IN	1	2580270000



## PROeco switched-mode power supplies

Type	Rated control voltage	AC / DC input voltage range	Clamping range min. / max.	Input / output	Qty.	Order No.
<b>1-phase</b>						
PRO ECO 72W 12V 6A	12 V DC / 6 A	85...264 V AC / 80...370 V DC	0.5...6 / 0.5...6 mm <sup>2</sup>	Screw	1	1469570000
PRO ECO 120W 12V 10A	12 V DC / 10 A	85...264 V AC / 80...370 V DC	0.5...6 / 0.5...6 mm <sup>2</sup>	Screw	1	1469580000
PRO ECO 72W 24V 3A	24 V DC / 3.0 A	85...264 V AC / 80...370 V DC	0.5...6 / 0.5...6 mm <sup>2</sup>	Screw	1	1469470000
PRO ECO 120W 24V 5A	24 V DC / 5.0 A	85...264 V AC / 80...370 V DC	0.5...6 / 0.5...6 mm <sup>2</sup>	Screw	1	1469480000
PRO ECO 240W 24V 10A	24 V DC / 10.0 A	85...264 V AC / 80...370 V DC	0.5...6 / 0.5...6 mm <sup>2</sup>	Screw	1	1469490000
PRO ECO 480W 24V 20A	24 V DC / 20.0 A	85...264 V AC / 80...370 V DC	0.5...6 / 0.5...6 mm <sup>2</sup>	Screw	1	1469510000
PRO ECO 960W 24V 40A	24 V DC / 40.0 A	85...264 V AC / 80...370 V DC	0.5...6 / 0.5...6 mm <sup>2</sup>	Screw	1	1469520000
PRO ECO 240W 48V 5A	48 V DC / 5.0 A	85...264 V AC / 80...370 V DC	0.5...6 / 0.5...6 mm <sup>2</sup>	Screw	1	1469590000
PRO ECO 480W 48V 10A	48 V DC / 10.0 A	85...264 V AC / 80...370 V DC	0.5...6 / 0.5...6 mm <sup>2</sup>	Screw	1	1469610000
<b>Three-phase</b>						
PRO ECO3 120W 24V 5A	24 V DC / 5.0 A	3 x 320...575 V AC / 450...800 V DC	0.5...6 / 0.5...6 mm <sup>2</sup>	Screw	1	1469530000
PRO ECO3 240W 24V 10A	24 V DC / 10.0 A	3 x 320...575 V AC / 450...800 V DC	0.5...6 / 0.5...6 mm <sup>2</sup>	Screw	1	1469540000
PRO ECO3 480W 24V 20A	24 V DC / 20.0 A	3 x 320...575 V AC / 450...800 V DC	0.5...6 / 0.5...6 mm <sup>2</sup>	Screw	1	1469550000
PRO ECO3 960W 24V 40A	24 V DC / 40.0 A	3 x 320...575 V AC / 450...800 V DC	0.5...6 / 0.5...6 mm <sup>2</sup>	Screw	1	1469560000



## PROmax - switched-mode power supplies

Type	Rated control voltage	AC / DC input voltage range	Clamping range min. / max.	Input / output	Qty.	Order No.
<b>1-phase</b>						
PRO MAX 70W 5V 14A	5 V DC / 14.0 A	85...277 V AC / 80...370 V DC	0.22...6.0 / 0.5...6.0 mm <sup>2</sup>	Screw	1	1478210000
PRO MAX 72W 12V 6A	12 V DC / 6.0 A	85...277 V AC / 80...370 V DC	0.22...6.0 / 0.5...6.0 mm <sup>2</sup>	Screw	1	1478220000
PRO MAX 120W 12V 10A	12 V DC / 10.0 A	85...277 V AC / 80...370 V DC	0.22...6.0 / 0.5...6.0 mm <sup>2</sup>	Screw	1	1478230000
PRO MAX 72W 24V 3A	24 V DC / 3.0 A	85...277 V AC / 80...370 V DC	0.22...6.0 / 0.5...6.0 mm <sup>2</sup>	Screw	1	1478100000
PRO MAX 120W 24V 5A	24 V DC / 5.0 A	85...277 V AC / 80...370 V DC	0.22...6.0 / 0.5...6.0 mm <sup>2</sup>	Screw	1	1478110000
PRO MAX 180W 24V 7.5A	24 V DC / 7.5 A	85...277 V AC / 80...370 V DC	0.22...6.0 / 0.5...6.0 mm <sup>2</sup>	Screw	1	1478120000
PRO MAX 240W 24V 10A	24 V DC / 10.0 A	85...277 V AC / 80...370 V DC	0.22...6.0 / 0.5...6.0 mm <sup>2</sup>	Screw	1	1478130000
PRO MAX 480W 24V 20A	24 V DC / 20.0 A	85...277 V AC / 80...370 V DC	0.22...6.0 / 0.5...6.0 mm <sup>2</sup>	Screw	1	1478140000
PRO MAX 960W 24V 40A	24 V DC / 40.0 A	85...277 V AC / 80...370 V DC	0.22...6.0 / 0.5...16.0 mm <sup>2</sup>	Screw	1	1478150000
PRO MAX 240W 48V 5A	48 V DC / 5.0 A	85...277 V AC / 80...370 V DC	0.22...6.0 / 0.5...6.0 mm <sup>2</sup>	Screw	1	1478240000
PRO MAX 480W 48V 10A	48 V DC / 10.0 A	85...277 V AC / 80...370 V DC	0.22...6.0 / 0.5...6.0 mm <sup>2</sup>	Screw	1	1478250000
PRO MAX 960W 48V 20A	48 V DC / 20.0 A	85...277 V AC / 80...370 V DC	0.22...6.0 / 0.5...16.0 mm <sup>2</sup>	Screw	1	1478270000
<b>Three-phase</b>						
PRO MAX3 120W 24V 5A	24 V DC / 5.0 A	3 x 320...575 V AC / 450...800 V DC	0.22...6.0 / 0.5...6.0 mm <sup>2</sup>	Screw	1	1478170000
PRO MAX3 240W 24V 10A	24 V DC / 10.0 A	3 x 320...575 V AC / 450...800 V DC	0.22...6.0 / 0.5...6.0 mm <sup>2</sup>	Screw	1	1478180000
PRO MAX3 480W 24V 20A	24 V DC / 20.0 A	3 x 320...575 V AC / 450...800 V DC	0.22...6.0 / 0.5...6.0 mm <sup>2</sup>	Screw	1	1478190000
PRO MAX3 960W 24V 40A	24 V DC / 40.0 A	3 x 320...575 V AC / 450...800 V DC	0.22...6.0 / 0.5...16.0 mm <sup>2</sup>	Screw	1	1478200000



## maxGuard - Electronic load monitoring

Type	Function	Input	Clamping range min. / max.	Input / output	Qty.	Order No.
<b>Power-feed module with alarm &amp; reset</b>						
AMG FIM-C	Power-feed module	24 V DC / 40 A	0.75 - 16 mm <sup>2</sup>	Cross-connector	1	2081880000
<b>Load monitoring, 1 pole, fixed values, normal characteristics, with alarm &amp; reset</b>						
AMG ELM-1F	Fixed value 1 A	24 V DC	0.14 - 2.5 mm <sup>2</sup>	Cross-connector	1	2080420000
AMG ELM-2F	Fixed value 2 A	24 V DC	0.14 - 2.5 mm <sup>2</sup>	Cross-connector	1	2080480000
AMG ELM-4F	Fixed value 4 A	24 V DC	0.14 - 2.5 mm <sup>2</sup>	Cross-connector	1	2080490000
AMG ELM-6F	Fixed value 6 A	24 V DC	0.14 - 2.5 mm <sup>2</sup>	Cross-connector	1	2080500000
AMG ELM-8F	Fixed value 8 A	24 V DC	0.14 - 2.5 mm <sup>2</sup>	Cross-connector	1	2080600000
AMG ELM-10F	Fixed value 10 A	24 V DC	0.14 - 2.5 mm <sup>2</sup>	Cross-connector	1	2080650000
<b>Load monitoring, 1 pole, adjustable - current &amp; characteristics, with alarm &amp; reset</b>						
AMG ELM-6	Setting values 1 / 2 / 3 / 4 / 6 A	24 V DC	0.14 - 2.5 mm <sup>2</sup>	Cross-connector	1	2080360000
AMG ELM-12	Setting values 4 / 6 / 8 / 10 / 12 A	24 V DC	0.14 - 2.5 mm <sup>2</sup>	Cross-connector	1	2080410000
Type	Function			Colour	Qty.	Order No.
<b>End plates / end brackets</b>						
AMG EP 2010	End plate for pot distributor module, finger-safe closure			●	30	2495380000
<b>Cross-connector</b>						
ZQV 4N/10	10-pole cross-connector			●	20	1528090000
ZQV 4N/50	50-pole cross-connector			●	5	1528130000
ZQV 4N/10 BL	10-pole cross-connector			●	20	1528230000
ZQV 4N/50 BL	50-pole cross-connector			●	5	1528240000
ZQV 4N/10 RD	10-pole cross-connector			●	20	2460740000
ZQV 4N/50 RD	50-pole cross-connector			●	5	2460730000





# 1.3 Klippon® Relay relay modules and solid-state relays

## High-quality and reliable relay modules and timing relays

A wide variety of loads need to be reliably switched or monitored in buildings. The relay modules and timing relays required for this must be integrated into the control cabinet in the most space-saving way possible. For over 40 years, we have been working to optimise control cabinet infrastructure. Thanks to our technical expertise and comprehensive understanding of the market, we offer high-quality relay

modules and timing relays under the Klippon® Relay name, which fulfil all current and future market requirements. Our product range impresses with highly reliable, safe, and durable products, complemented by a wide selection of services. These include providing digital data, advising on switching loads, and practical selection guide to offer you comprehensive support.



### TFI-SERIES – reliable control of timing functions

- Simple configuration via rotary switches
- Compliance with international standards according to EN 61812
- UL approval for the North American market
- Available in installation design and compact industrial design



### TERMSERIES - Modular relay modules from 6 mm width

- Reliable decoupling PLC's and switching industrial small loads in the smallest space.
- Versions with built-in LED, protective circuit and test button
- Control voltages from 5 V to 230 V with 1 to 2 CO contacts and 1 NO contact up to 16 A
- Extensive accessories from interface adapters to marker
- Wide range of variants and unlimited cross-connection possibilities



### D-SERIES - industrial relay modules

- Space-saving industrial miniature relays with robust contacts
- Variants with built-in LED or test button
- Control voltages from 12 V to 230 V with 1 to 4 CO contacts up to 10 A
- Tailor-made accessories from cross-connections to marker



## TFI-SERIES - timing relay

Type	Control side	Load side	Timing functions	Qty.	Order No.
<b>Screw connection</b>					
TFIS 12-240VUC 1CO M7C	12..240 V UC-10% / +10%	250 V AC / 8 A - 1 CO contact (AgNi)	Clock generator pause first On-delay On-delay with control input Off-delay with control input Single shot falling edge with control input Single shot rising edge with control input Single shot rising edge supply voltage controlled	1	2697250000
TFIS 12-240VUC 1CO CG	12..240 V UC-10% / +10%	250 V AC / 8 A - 1 CO contact (AgNi)	clock generator pulse first clock generator pause first	1	2697260000
TFIS 12-240VUC 2NO SD	12..240 V UC-10% / +10%	250 V AC / 3 A - 2 NO contacts (AgNi)	Star-delta	1	2697270000
TFIS 24-240VUC 1CO ON	24..240 V UC-15% / +10%	250 V AC / 8 A - 1 CO contact (AgNi)	On-delay	1	2697280000
TFIS 24-240VUC 1CO OFFC	24..240 V UC-15% / +10%	250 V AC / 8 A - 1 CO contact (AgNi)	Off-delay with control input	1	2697290000
<b>PUSH IN Technology</b>					
TFIP 12-240VUC 1CO M7C	12..240 V UC-10% / +10%	250 V AC / 8 A - 1 CO contact (AgNi)	Clock generator pause first On-delay On-delay with control input Off-delay with control input Single shot falling edge with control input Single shot rising edge with control input Single shot rising edge supply voltage controlled	1	2898320000
TFIP 12-240VUC 1CO CG	12..240 V UC-10% / +10%	250 V AC / 8 A - 1 CO contact (AgNi)	clock generator pulse first clock generator pause first	1	2898310000
TFIP 24-240VUC 1CO ON	24..240 V UC-15% / +10%	250 V AC / 8 A - 1 CO contact (AgNi)	On-delay	1	2898340000
TFIP 24-240VUC 1CO OFFC	24..240 V UC-15% / +10%	250 V AC / 8 A - 1 CO contact (AgNi)	Off-delay with control input	1	2898330000



## TERMSERIES-compact and TERMSERIES - relay modules

Type	Control side	Load side	Clamping range min. /max. / connection type	Qty.	Order No.
<b>1 CO contact (AgSnO)- Complete module in 6.4 mm width</b>					
TRP 24VDC 1CO	24 V DC	250 V AC / 6 A - 1 CO contact	0.14...2.5 mm <sup>2</sup> / PUSH IN	10	2618000000
TRP 24VUC 1CO	24 V UC	250 V AC / 6 A - 1 CO contact	0.14...2.5 mm <sup>2</sup> / PUSH IN	10	2618220000
TRP 24-230VUC 1CO ED2	24..230 V UC	250 V AC / 6 A - 1 CO contact	0.14...2.5 mm <sup>2</sup> / PUSH IN	10	2663010000
TRP 230VAC RC 1CO	230 V AC	250 V AC / 6 A - 1 CO contact	0.14...2.5 mm <sup>2</sup> / PUSH IN	10	2618200000
TRPL 24VDC 1CO	24 V DC	250 V AC / 6 A - 1 CO contact	0.14...2.5 mm <sup>2</sup> / PUSH IN	10	2773890000
TRPL 24VUC 1CO	24 V UC	250 V AC / 6 A - 1 CO contact	0.14...2.5 mm <sup>2</sup> / PUSH IN	10	2773970000
TRPL 12-60VUC 1CO	12..60 V UC	250 V AC / 6 A - 1 CO contact	0.14...2.5 mm <sup>2</sup> / PUSH IN	10	2773770000
TRPL 24-230VUC 1CO	24..230 V UC	250 V AC / 6 A - 1 CO contact	0.14...2.5 mm <sup>2</sup> / PUSH IN	10	2773860000
TRPL 230VAC 1CO	230 V AC	250 V AC / 6 A - 1 CO contact	0.14...2.5 mm <sup>2</sup> / PUSH IN	10	2773830000
<b>1 CO contact (AgSnO)- Complete module in 6.4 mm width, with test button</b>					
TRP 24VDC 1CO AGSNO PB	24 V DC	250 V AC / 6 A - 1 CO contact	0.14...2.5 mm <sup>2</sup> / PUSH IN	10	2855800000
TRP 24VUC 1CO AGSNO PB	24 V UC	250 V AC / 6 A - 1 CO contact	0.14...2.5 mm <sup>2</sup> / PUSH IN	10	2855810000
TRP 24-230VUC 1CO AGSNO ED2 PB	24..230 V UC	250 V AC / 6 A - 1 CO contact	0.14...2.5 mm <sup>2</sup> / PUSH IN	10	2855910000
<b>2 CO contact (AgSnO)- Complete module in 12.8 mm width</b>					
TRP 24VDC 2CO	24 V DC	250 V AC / 8 A - 2 CO contact	0.14...2.5 mm <sup>2</sup> / PUSH IN	10	2618400000
TRP 24VUC 2CO	24 V UC	250 V AC / 8 A - 2 CO contact	0.14...2.5 mm <sup>2</sup> / PUSH IN	10	2618320000
TRP 24-230VUC 2CO ED2	24..230 V UC	250 V AC / 8 A - 2 CO contact	0.14...2.5 mm <sup>2</sup> / PUSH IN	10	2663040000
TRP 230VAC RC 2CO	230 V AC	250 V AC / 8 A - 2 CO contact	0.14...2.5 mm <sup>2</sup> / PUSH IN	10	2618330000
<b>1 CO contact (AgSnO)- Complete module in 12.8 mm width</b>					
TRP 24VDC 1CO 16A	24 V DC	250 V AC / 16 A - 1 CO contact	0.14...2.5 mm <sup>2</sup> / PUSH IN	10	2618100000
TRP 24VUC 1CO 16A	24 V UC	250 V AC / 16 A - 1 CO contact	0.14...2.5 mm <sup>2</sup> / PUSH IN	10	2617910000
TRP 24-230VUC 1CO 16A ED2	24..230 V UC	250 V AC / 16 A - 1 CO contact	0.14...2.5 mm <sup>2</sup> / PUSH IN	10	2663120000
TRP 230VAC RC 1CO 16A	230 V AC	250 V AC / 16 A - 1 CO contact	0.14...2.5 mm <sup>2</sup> / PUSH IN	10	2618190000
<b>1 NO contact (AgSnO)- Complete module in 12.8 mm width</b>					
TRP 24VDC 1NO HCP	24 V DC	250 V AC / 16 A - 1 NO contact	0.14...2.5 mm <sup>2</sup> / PUSH IN	10	2617930000
TRP 24-230VUC 1NO HCP ED2	24..230 V UC	250 V AC / 16 A - 1 NO contact	0.14...2.5 mm <sup>2</sup> / PUSH IN	10	2663140000

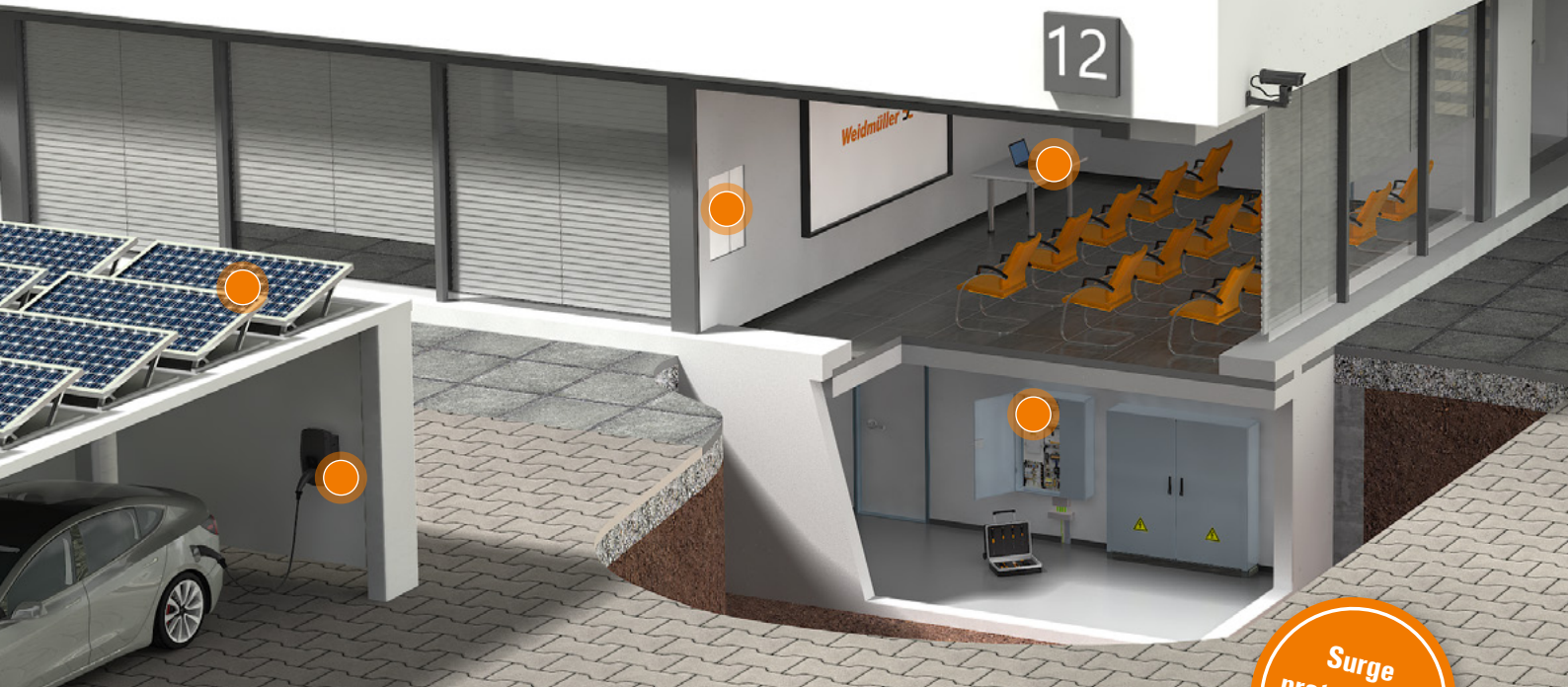


## D-SERIES - relay modules

Type	Control side	Load side	Clamping range min. /max. / connection type	Qty.	Order No.
<b>1 CO contact (AgSnO)- Complete module in 15.9 mm width, with test button</b>					
DRIKITP 24VDC 1CO LD/PB	24 V DC	250 V AC / 10 A - 1 CO contact	0.14...1.5 mm <sup>2</sup> / PUSH IN	10	2576210000
DRIKITP 24VAC 1CO LD/PB	24 V AC	250 V AC / 10 A - 1 CO contact	0.14...1.5 mm <sup>2</sup> / PUSH IN	10	2576250000
DRIKITP230VAC 1CO LD/PB	230 V AC	250 V AC / 10 A - 1 CO contact	0.14...1.5 mm <sup>2</sup> / PUSH IN	10	2576160000
<b>2 CO contact (AgSnO)- Complete module in 15.9 mm width, with test button</b>					
DRIKITP 24VDC 2CO LD/PB	24 V DC	250 V AC / 5 A - 2 CO contact	0.14...1.5 mm <sup>2</sup> / PUSH IN	10	2576190000
DRIKITP 24VAC 2CO LD/PB	24 V AC	250 V AC / 5 A - 2 CO contact	0.14...1.5 mm <sup>2</sup> / PUSH IN	10	2576230000
DRIKITP230VAC 2CO LD/PB	230 V AC	250 V AC / 5 A - 2 CO contact	0.14...1.5 mm <sup>2</sup> / PUSH IN	10	2576150000
<b>2 CO contacts (AgNi flash plated) - Complete module in 30.6 mm width, with test button</b>					
DRMKITP 24VDC 2CO LD/PB	24 V DC	250 V AC / 10 A - 2 CO contact	0.14...1.5 mm <sup>2</sup> / PUSH IN	10	2576120000
DRMKITP 24VAC 2CO LD/PB	24 V AC	250 V AC / 5 A - 2 CO contact	0.14...1.5 mm <sup>2</sup> / PUSH IN	10	2576080000
DRMKITP230VAC 2CO LD/PB	230 V AC	250 V AC / 10 A - 2 CO contact	0.14...1.5 mm <sup>2</sup> / PUSH IN	10	2576040000
<b>4 CO contacts (AgNi flash plated) - Complete module in 30.6 mm width, with test button</b>					
DRMKITP 24VDC 4CO LD/PB	24 V DC	250 V AC / 5 A - 4 CO contact	0.14...1.5 mm <sup>2</sup> / PUSH IN	10	2576140000
DRMKITP 24VAC 4CO LD/PB	24 V AC	250 V AC / 5 A - 4 CO contact	0.14...1.5 mm <sup>2</sup> / PUSH IN	10	2576100000
DRMKITP230VAC 4CO LD/PB	230 V AC	250 V AC / 5 A - 4 CO contact	0.14...1.5 mm <sup>2</sup> / PUSH IN	10	2576060000







Surge protection is mandatory!

# 1.4 VARITECTOR lightning and surge protection

## Continuous protection for your building infrastructure

Equipment and energy systems in buildings are becoming more complex and more sensitive. Therefore, surge protection is particularly important when constructing new building infrastructures. In addition to minimising the risk of damage, the choice of the best surge protection focuses on finding a future-proof design and improving efficiency. Since indirectly coupled surges can cause damage, the installation of surge protection devices (SPD) is subject to specific regulations. DIN VDE 0100-534 defines where and how surge protection must be installed. The goal is to ensure

complete protection, from the power feed-in to the power distribution and the final device, and offer protection against dangerous surges of all kinds. Integrating surge protection has been mandatory since 2018. This applies to all new buildings and to modifications or expansions of existing electrical installations. Supplementary protective devices are recommended if the cable length between the surge protection and the device to be protected is longer than 10 metres. Ethernet and SAT cables are also required to be protected.



### Lightning and surge protection for power systems

- Fuseless operation up to 315 A
- Extended N/PE protection
- Full status control



### Lightning and surge protection for instrumentation and control (I&C)

- Pluggable (VSPC) or space-saving terminal block design (VSCC)
- Direct or floating grounding via the surge protection VSPC BASE



### Lightning and surge protection for data interfaces

- Tested in accordance with IEC/EN 61643-21
- Slimline in terminal design
- Visual and electrical message function



## VPU ZPA S

Type	Continuous current / lightning impulse current ( $I_{imp}$ )	Version	Network	Qty.	Order No.
<b>12.5 kA - without phase tap</b>					
VPU ZPA S I 3 300/12.5	300 V AC / 12.5 kA	without remote signalling contact, leakage current free	TN-C	1	2830870000
VPU ZPA S I 3+1 300/12.5	300 V AC / 12.5 kA	without remote signalling contact, leakage current free	TN-S, TT, IT	1	2830900000
<b>12.5 kA - with phase tap for L1</b>					
VPU ZPA S I 3+1 RA 300/12.5	300 V AC / 12.5 kA	with remote signalling contact, leakage current free	TN-S, TT, IT	1	2830920000
<b>7.5 kA - without phase tap</b>					
VPU ZPA S I 3 300/7.5	300 V AC / 7.5 kA	without remote signalling contact, leakage current free	TN-C	1	2830930000
VPU ZPA S I 3+1 300/7.5	300 V AC / 7.5 kA	without remote signalling contact, leakage current free	TN-S, TT, IT	1	2830960000
<b>7.5 kA - with phase tap for L1</b>					
VPU ZPA S I 3+1 RA 300/7.5	300 V AC / 7.5 kA	with remote signalling contact, leakage current free	TN-S, TT, IT	1	2830980000
<b>Zubehör ZPAS</b>					
V-ZPA Terminal	240V AC	-	-	1	2904470000
V-ZPA Fuse Holder	240V AC	-	-	1	2904480000



## VPU AC I

Type	Continuous current / lightning impulse current ( $I_{imp}$ )	Version	Network	Qty.	Order No.
<b>Type I arrester - pre-counter range - 275 V AC / 25 kA - S-line</b>					
VPU AC I 3 275/25 LCF S	275 V AC / 25 kA	without remote signalling contact, leakage current free	TN-C	1	2726740000
VPU AC I 3 R 275/25 LCF S	275 V AC / 25 kA	with remote signalling contact, leakage current free	TN-C	1	2726750000
VPU AC I 3+1 275/25 LCF S 2PE	275 V AC / 25 kA	without remote signalling contact, leakage current free	TN-CS, TN-S, TT	1	2726760000
VPU AC I 3+1 R 275/25 LCF S 2PE	275 V AC / 25 kA	with remote signalling contact, leakage current free	TN-CS, TN-S, TT	1	2726770000
VPU AC I 4 275/25 LCF S	275 V AC / 25 kA	without remote signalling contact, leakage current free	TN-CS, TN-S	1	2726780000
VPU AC I 4 R 275/25 LCF S	275 V AC / 25 kA	with remote signalling contact, leakage current free	TN-CS, TN-S	1	2726790000
<b>Type I arrester - pre-counter range - 300 V AC / 12.5 kA</b>					
VPU AC I 3 300/12.5 LCF	300 V AC / 12.5 kA	without remote signalling contact, leakage current free	TN-C	1	2636970000
VPU AC I 3 R 300/12.5 LCF	300 V AC / 12.5 kA	with remote signalling contact, leakage current free	TN-C	1	2636980000
VPU AC I 3+1 300/12.5 LCF	300 V AC / 12.5 kA	without remote signalling contact, leakage current free	TN-CS, TN-S, TT	1	2636910000
VPU AC I 3+1 R 300/12.5 LCF	300 V AC / 12.5 kA	with remote signalling contact, leakage current free	TN-CS, TN-S, TT	1	2636920000
<b>Type I arrester - post-counter range - 300 V AC / 12.5 kA</b>					
VPU AC I 3 300/12.5	300 V AC / 12.5 kA	without remote signalling contact	TN-C	1	2591440000
VPU AC I 3 R 300/12.5	300 V AC / 12.5 kA	with remote signalling contact	TN-C	1	2591450000
VPU AC I 3+1 300/12.5	300 V AC / 12.5 kA	without remote signalling contact	TN-CS, TT, IT with N, IT without N	1	2591460000
VPU AC I 3+1 R 300/12.5	300 V AC / 12.5 kA	with remote signalling contact	TN-CS, TT, IT with N, IT without N	1	2591470000
VPU AC I 4 300/12.5	300 V AC / 12.5 kA	without remote signalling contact	TN-CS, TN-S	1	2591420000
VPU AC I 4 R 300/12.5	300 V AC / 12.5 kA	with remote signalling contact	TN-CS, TN-S	1	2591430000



## VPU AC II

Type	Continuous current / discharge current ( $I_{max}$ )	Version	Network	Qty.	Order No.
<b>Type II arrester - post-counter range - 300 V AC / 50 kA</b>					
VPU AC II 3 300/50	300 V AC / 50 kA	without remote signalling contact	Single-phase, TN	1	2591160000
VPU AC II 3 R 300/50	300 V AC / 50 kA	with remote signalling contact	Single-phase, TN	1	2591170000
VPU AC II 3+1 300/50	300 V AC / 50 kA	without remote signalling contact	TN-CS, TN-S, TT	1	2591080000
VPU AC II 3+1 R 300/50	300 V AC / 50 kA	with remote signalling contact	TN-CS, TN-S, TT	1	2591090000
VPU AC II 4 300/50	300 V AC / 50 kA	without remote signalling contact	TN-CS, TN-S	1	2591140000
VPU AC II 4 R 300/50	300 V AC / 50 kA	with remote signalling contact	TN-CS, TN-S	1	2591150000
<b>Type II arrester with integrated fuse - post-counter range - 300 V AC / 40 kA</b>					
VPU AC II F 3 300/40	300 V AC / 40 kA	without remote signalling contact	Single-phase, TN	1	2827600000
VPU AC II F 3 R 300/40	300 V AC / 40 kA	with remote signalling contact	Single-phase, TN	1	2807410000
VPU AC II F 3+1 300/40	300 V AC / 40 kA	without remote signalling contact	TN-CS, TN-S, TT	1	2827630000
VPU AC II F 3+1 R 300/40	300 V AC / 40 kA	with remote signalling contact	TN-CS, TN-S, TT	1	2807440000
VPU AC II F 4 300/40	300 V AC / 40 kA	without remote signalling contact	TN-CS, TN-S	1	2827610000
VPU AC II F 4 R 300/40	300 V AC / 40 kA	with remote signalling contact	TN-CS, TN-S	1	2807420000



## VPU III

Type	Continuous current / rated current	Version	Description	Qty.	Order No.
<b>Type III arrester - 12 to 230 V AC/DC</b>					
VPU III R 24V/4KV AC/DC	24 V / 16 A	with remote signalling contact	For use as device protector / TS35	1	1351580000
VPU III R 230V/6KV AC	230 V / 16 A	with remote signalling contact	For use as device protector / TS35	1	1351650000
VPU III SO LD	230 V / 16 A	with LED, without test button	For use as device protector / flush-mounted	1	1351680000
VPU III SO LD+A	230 V / 16 A	with LED and acoustic signal	For use as device protector / flush-mounted	1	1351700000



## V-DATA

Type	Suitable for:	Connection type	Qty.	Order No.
VDATA CAT6	Cat. 5 (up to 100 MHz) and Cat. 6 to 250 MHz (Class E), PoE (according to IEEE 802.3af) and PoE+ (according to IEEE 802.3at)	RJ45	1	1348590000



## Internet/telephone/broadband

Type	Max. continuous current $U_c$	Discharge current $I_n$	Discharge current $I_{max}$	Qty.	Order No.
VSPC TELE UKO 2WIRE	180 V DC	2.5 kA	10 kA	1	8924660000
VSPC BASE 2 CL	180 V DC	2.5 kA	10 kA	1	8924710000





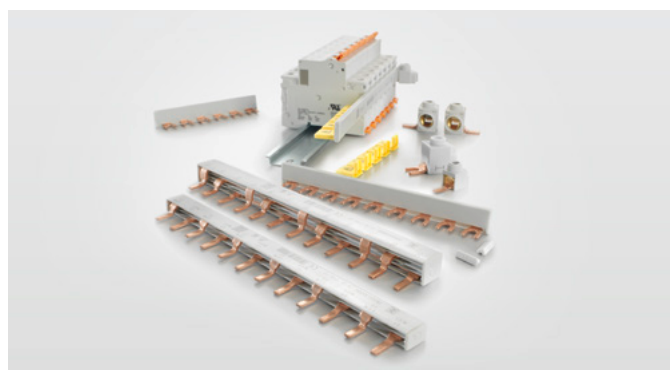


# 1.5 Phase distribution bars with pin and fork contact

## Simple and safe potential distribution on installation devices

For a simple and safe potential distribution on installation devices, phase distribution bars are used in the building industry. Weidmüller offers phase distribution bars in various designs, which differ in the number of poles and the cross-section and are available with pin or fork connections. Switchgear according to DIN 18015 or DIN VDE 0701-0702 can be realized with the FI+6LS variant.

For systems outside this standard with an installation width of 12 pitch units (TE), the variants with FI-8LS, i.e. a width of 12 TE, are available. In addition a suitable range of accessories for power supply modules, end caps and covers is available.



### Phase distribution bars

- Wide range of accessories
- Compatible with all common installation device manufacturers
- Fork and pin versions



### Phase distribution bars with overlapping N-Potential

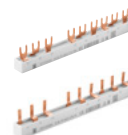
- Potential distribution according to DIN 18015 or DIN VDE 0701-0702 possible
- Compatible with all common installation device manufacturers
- Fork and pin versions





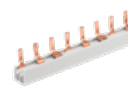
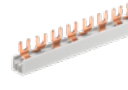
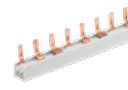
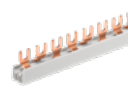
## Phase distribution bars with overlapping N-Potential

Type	Rail type	Rated current/for wire cross-section	Poles / pitch	Qty.	Order No.
<b>Forked track 10 mm<sup>2</sup></b>					
G-3L-FI+6LS-178/10 C	3-pole M6 forked track	63 A / 10 mm <sup>2</sup>	10-pole / 17.8 mm	5	2917320000
G-3L-FI+8LS-210/10 C	3-pole M6 forked track	63 A / 10 mm <sup>2</sup>	12-pole / 17.8 mm	5	2891860000
<b>Pin rail 10 mm<sup>2</sup></b>					
S-3L-FI+6LS-178/10	3-pole pin rail	63 A / 10 mm <sup>2</sup>	10-pole / 17.8 mm	5	2917330000
S-3L-FI+8LS-210/10	3-pole pin rail	63 A / 10 mm <sup>2</sup>	12-pole / 17.8 mm	5	2891870000



## Phase distribution bars

Type	Rail type	Rated current/for wire cross-section	Poles / pitch	Qty.	Order No.
<b>Forked track 10 mm<sup>2</sup></b>					
G-1L-210/10	1-pole M6 forked track	63 A / 10 mm <sup>2</sup>	12-pole / 17.8 mm	10	2657810000
G-1L-320/10	1-pole M6 forked track	63 A / 10 mm <sup>2</sup>	18-pole / 17.8 mm	10	2657850000
G-1L-1000/10	1-pole M6 forked track	63 A / 10 mm <sup>2</sup>	57-pole / 17.8 mm	10	2657870000
G-2L-210/10	2-pole M6 forked track	63 A / 10 mm <sup>2</sup>	12-pole / 17.8 mm	5	2658110000
G-2L-320/10	2-pole M6 forked track	63 A / 10 mm <sup>2</sup>	18-pole / 17.8 mm	5	2658130000
G-2L-1000/10	2-pole M6 forked track	63 A / 10 mm <sup>2</sup>	56-pole / 17.8 mm	5	2658150000
G-3L-210/10 C	3-pole M6 forked track	63 A / 10 mm <sup>2</sup>	12-pole / 17.8 mm	5	2658370000
G-3L-320/10 C	3-pole M6 forked track	63 A / 10 mm <sup>2</sup>	18-pole / 17.8 mm	5	2658410000
G-3L-1000/10 C	3-pole M6 forked track	63 A / 10 mm <sup>2</sup>	57-pole / 17.8 mm	5	2658450000
G-4L-210/10 C	4-pole M6 forked track	63 A / 10 mm <sup>2</sup>	12-pole / 17.8 mm	5	2658710000
G-4L-1000/10 C	4-pole M6 forked track	63 A / 10 mm <sup>2</sup>	56-pole / 17.8 mm	5	2658750000
<b>Pin rail 10 mm<sup>2</sup></b>					
S-1L-210/10	1-pole pin rail	63 A / 10 mm <sup>2</sup>	12-pole / 17.8 mm	10	2657970000
S-1L-320/10	1-pole pin rail	63 A / 10 mm <sup>2</sup>	18-pole / 17.8 mm	10	2658010000
S-1L-1000/10	1-pole pin rail	63 A / 10 mm <sup>2</sup>	57-pole / 17.8 mm	10	2658030000
S-2L-210/10	2-pole pin rail	63 A / 10 mm <sup>2</sup>	12-pole / 17.8 mm	5	2658230000
S-2L-320/10	2-pole pin rail	63 A / 10 mm <sup>2</sup>	18-pole / 17.8 mm	5	2658250000
S-2L-1000/10	2-pole pin rail	63 A / 10 mm <sup>2</sup>	56-pole / 17.8 mm	5	2658270000
S-3L-210/10	3-pole pin rail	63 A / 10 mm <sup>2</sup>	12-pole / 17.8 mm	5	2658550000
S-3L-320/10	3-pole pin rail	63 A / 10 mm <sup>2</sup>	18-pole / 17.8 mm	5	2658590000
S-3L-1000/10	3-pole pin rail	63 A / 10 mm <sup>2</sup>	57-pole / 17.8 mm	5	2658630000
S-4L-210/10	4-pole pin rail	63 A / 10 mm <sup>2</sup>	12-pole / 17.8 mm	5	2658850000
S-4L-1000/10	4-pole pin rail	63 A / 10 mm <sup>2</sup>	56-pole / 17.8 mm	5	2658890000
<b>Forked track 16 mm<sup>2</sup></b>					
G-1L-210/16	1-pole M6 forked track	80 A / 16 mm <sup>2</sup>	12-pole / 17.8 mm	10	2657820000
G-1L-320/16	1-pole M6 forked track	80 A / 16 mm <sup>2</sup>	18-pole / 17.8 mm	10	2657860000
G-1L-1000/16	1-pole M6 forked track	80 A / 16 mm <sup>2</sup>	57-pole / 17.8 mm	10	2657880000
G-2L-210/16	2-pole M6 forked track	80 A / 16 mm <sup>2</sup>	12-pole / 17.8 mm	5	2658120000
G-2L-320/16	2-pole M6 forked track	80 A / 16 mm <sup>2</sup>	18-pole / 17.8 mm	5	2658140000
G-2L-1000/16	2-pole M6 forked track	80 A / 16 mm <sup>2</sup>	56-pole / 17.8 mm	5	2658160000
G-3L-210/16 C	3-pole M6 forked track	80 A / 16 mm <sup>2</sup>	12-pole / 17.8 mm	5	2658380000
G-3L-320/16 C	3-pole M6 forked track	80 A / 16 mm <sup>2</sup>	18-pole / 17.8 mm	5	2658420000
G-3L-1000/16 C	3-pole M6 forked track	80 A / 16 mm <sup>2</sup>	57-pole / 17.8 mm	5	2658460000
G-4L-210/16 C	4-pole M6 forked track	80 A / 16 mm <sup>2</sup>	12-pole / 17.8 mm	5	2658720000
G-4L-1000/16 C	4-pole M6 forked track	80 A / 16 mm <sup>2</sup>	56-pole / 17.8 mm	5	2658760000
<b>Pin rail 16 mm<sup>2</sup></b>					
S-1L-210/16	1-pole pin rail	80 A / 16 mm <sup>2</sup>	12-pole / 17.8 mm	10	2657980000
S-1L-320/16	1-pole pin rail	80 A / 16 mm <sup>2</sup>	18-pole / 17.8 mm	10	2658020000
S-1L-1000/16	1-pole pin rail	80 A / 16 mm <sup>2</sup>	57-pole / 17.8 mm	10	2658040000
S-2L-210/16	2-pole pin rail	80 A / 16 mm <sup>2</sup>	12-pole / 17.8 mm	5	2658240000
S-2L-320/16	2-pole pin rail	80 A / 16 mm <sup>2</sup>	18-pole / 17.8 mm	5	2658260000
S-2L-1000/16	2-pole pin rail	80 A / 16 mm <sup>2</sup>	56-pole / 17.8 mm	5	2658280000
S-3L-210/16	3-pole pin rail	80 A / 16 mm <sup>2</sup>	12-pole / 17.8 mm	5	2658560000
S-3L-320/16	3-pole pin rail	80 A / 16 mm <sup>2</sup>	18-pole / 17.8 mm	5	2658600000
S-3L-1000/16	3-pole pin rail	80 A / 16 mm <sup>2</sup>	57-pole / 17.8 mm	5	2658640000
S-4L-210/16	4-pole pin rail	80 A / 16 mm <sup>2</sup>	12-pole / 17.8 mm	5	2658860000
S-4L-1000/16	4-pole pin rail	80 A / 16 mm <sup>2</sup>	56-pole / 17.8 mm	5	2658900000



## Accessories

Type	Product type	Rated current/for wire cross-section	Colour	Qty.	Order No.
<b>Power-feed module for fork and bar design</b>					
FIT 25 GN	Feed-in signalling disc for forked rails	101 A / 25 mm <sup>2</sup>	●	10	2659050000
FIT 25 SN	Feed-in signalling disc for pin rails	101 A / 25 mm <sup>2</sup>	●	10	2659060000
FIT 50 GN	Feed-in signalling disc for forked rails	150 A / 50 mm <sup>2</sup>	●	3	2659070000
FIT 50 SN	Feed-in signalling disc for pin rails	150 A / 50 mm <sup>2</sup>	●	3	2659080000
FIT 50 GN/F	Feed-in signalling disc for forked rails	150 A / 50 mm <sup>2</sup>	●	3	2659090000
FIT 50 SN/F	Feed-in signalling disc for pin rails	150 A / 50 mm <sup>2</sup>	●	3	2659100000
<b>End caps and covers</b>					
END CAP G+S 1L/10-16	End plate	1-pole rail	●	50	2658970000
END CAP G+S 2L/10	End plate	2-pole rail	●	10	2658980000
END CAP G+S 2L/16	End plate	2-pole rail	●	10	2658990000
END CAP G+S 3L/10	End plate	3-pole rail	●	10	2659000000
END CAP G+S 3L/16	End plate	3-pole rail	●	10	2659060000
END CAP G+S 4L/10	End plate	4-pole rail	●	10	2659010000
END CAP G+S 4L/16	End plate	4-pole rail	●	10	2659030000
PROTECTION COVER G+S /5	Cover / touch guard for fork and bar design		●	10	2659040000



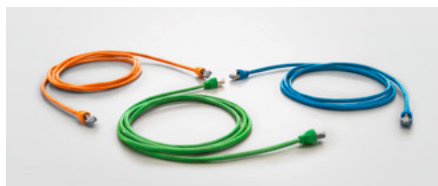


# 1.6 Smart Metering connectivity technology

## Lower energy costs and save resources

With intelligent measurement systems consisting of a counter and gateway, loads on power grids can be optimised and energy costs can be reduced. Thanks to an additional control box, devices can be switched on or off as needed. We provide you the connectivity solutions you need to integrate these kinds of systems – in compliance with FNN and DIN-VDE 0603 standards. Our portfolio also includes colour

coded connectors with PUSH IN wire connection technology, pre-assembled energy cables and patch cables with 6 kV impulse withstand voltage to supplement these solutions. We also offer power distributors for top-hat rails and for devices as well as RJ45 and RJ12 couplings for the top-hat rail.



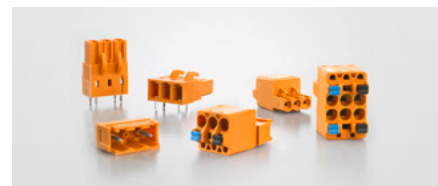
### RJ45 patch cable for 6 kV

- 8-Pole, Cat 5e, IP30
- Impulse withstand voltage 6 kV
- Compact design and space-saving installation in the meter cabinet



### Assembled energy cable in 6 kV

- 2-Pole energy cable 230 V
- Protection class IP30
- Different lengths and designs



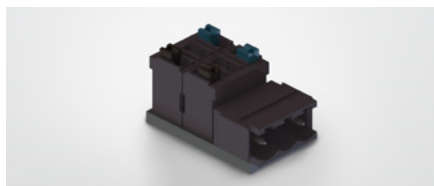
### OMNIMATE® connectors

- PUSH IN or screw connection
- Colour coded, 230 V
- Male headers, sockets or Y-sockets



### Power top-hat rail distributor

- For TS 35 terminal rails
- Colour coded, 230 V
- Pluggable thanks to PUSH IN wire connection



### Pluggable 3x energy distributor

- Double connection in PUSH IN design
- Colour coded, 230 V
- Protection class IP30



### RJ 45 coupling, 360 degrees shielded

- With dust cap
- Can be snapped onto top-hat rails and meter crosses
- Compact design, height < 32 mm





## LMN control cable (6kv surge voltage, double insulation) and low profile couplings (RJ12)

Type	Design	Length	Colour	Qty.	Order No.
IE-C6G06LR0003F40F40-X-K6KV	LMN (Local Metrologic Network)	0.3 m	●	1	2860910003
IE-C6G06LR0008F40F40-X-K6KV	LMN (Local Metrologic Network)	0.8 m	●	1	2860910008
IE-C6G06LR0011F40F40-X-K6KV	LMN (Local Metrologic Network)	1.1 m	●	1	2860910011
IE-TO-RJ12-C	Low Profile, height 37 mm	-	● ●	10	2861240000



## Power cable 6 kV surge voltage for Smart Metering power supply

Type	Product type	Connectors	Length	Qty.	Order No.
CH-SMC-00.33-VC180	Power cable, inverted male connector, closed on side	Male, straight / female, straight	330 mm length	10	2775880033
CH-SMC-00.33-OVP180	Power cable, inverted male connector, open on side	Male, straight / female, straight	330 mm length	10	2853620033
CH-SMC-00.33-CG90	Power cable, inverted male connector, closed on side	Male straight / female angled	330 mm length	10	2775910033
CH-SMC-00.33-ECB180	Power cable, extension Socket connector straight	Male, straight / female, straight	330 mm	10	2784110033
CH-SMC-00.33-OVP180	Power cable, extension Pin connector straight	Male, straight / female, straight	330 mm	10	2853620033
CH-SMC-00.33-ECB90	Power cable, extension Socket connector angled	Male straight / female angled	330 mm	10	2775960033
<b>Power cable power supply 400 Volt</b>					
CH-SMC-00.33-AB90	Power cable 400V / pin assignment 1 and 2	Male straight / Buchse gewinkelt	330 mm	10	2776030033
CH-SMC-00.33-Y3C90	Y Power cable 400V / pin assignment 1 and 2	Male straight / 2 x female angled	Male/female 330 mm Female/female 200mm	10	2775960033



Note: (1) also available in 800 mm length; (2) also available in 600, 800, 950, 1200 mm length

## Power cable with double insulation 6 kV

Type	Rated voltage	Note	Length	Qty.	Order No.
CH-SMC-KB-2X1.5-6KV-0050	600 V	2-pole / 1.5 mm <sup>2</sup> / PUR halogen-free	50 Meter	1	2852960050



## Y Power cable for Smart Metering voltage distribution

Type	Product type	Connectors	Length	Qty.	Order No.
CH-SMC-00.33-YCC90	Y Power cable	2 x female angled / 1 x male straight	Female/female 200 mm / male 330 mm	10	2774930033
CH-SMC-00.33-VCC180	Y Power cable	Male straight / double female straight / female straight	Male/female 330 mm / Female/female 200 mm	10	2775840033
CH-SMC-00.33-Y2C180	Y Power cable	Male straight / double female straight / open end	Male/female 330 mm / open end 200 mm	10	2775940033
CH-SMC-00.33-Y2C180/90	Y Power cable	Double female straight / female angled / open end	Female/female 330 mm / open end 1200 mm	10	2817670033



## Ethernet patch cable RJ45, Cat.5e, 6 kV surge voltage, double insulation

Type	Product type	Category	Length	Colour	Qty.	Order No.
<b>Patch cable blue (WAN)</b>						
IE-C5ES8VB0003N40N40-B-K6KV	Patch cable, RJ45	Cat.5 (ISO/IEC 11801) / Cat.5e (TIA T568-B)	0.3 m	●	1	2813820003
IE-C5ES8VB0004N40N40-B-K6KV	Patch cable, RJ45	Cat.5 (ISO/IEC 11801) / Cat.5e (TIA T568-B)	0.4 m	●	1	2813820004
IE-C5ES8VB0005N40N40-B-K6KV	Patch cable, RJ45	Cat.5 (ISO/IEC 11801) / Cat.5e (TIA T568-B)	0.5 m	●	1	2813820005
IE-C5ES8VB0010N40N40-B-K6KV	Patch cable, RJ45	Cat.5 (ISO/IEC 11801) / Cat.5e (TIA T568-B)	1.0 m	●	1	2813820010
IE-C5ES8VB0015N40N40-B-K6KV	Patch cable, RJ45	Cat.5 (ISO/IEC 11801) / Cat.5e (TIA T568-B)	1.5 m	●	1	2813820015
IE-C5ES8VB0020N40N40-B-K6KV	Patch cable, RJ45	Cat.5 (ISO/IEC 11801) / Cat.5e (TIA T568-B)	2.0 m	●	1	2813820020
<b>Patch cable green (HAN)</b>						
IE-C5ES8VG0003N40N40-G-K6KV	Patch cable, RJ45	Cat.5 (ISO/IEC 11801) / Cat.5e (TIA T568-B)	0.3 m	●	1	2814800003
IE-C5ES8VG0005N40N40-G-K6KV	Patch cable, RJ45	Cat.5 (ISO/IEC 11801) / Cat.5e (TIA T568-B)	0.5 m	●	1	2814800005
IE-C5ES8VG0010N40N40-G-K6KV	Patch cable, RJ45	Cat.5 (ISO/IEC 11801) / Cat.5e (TIA T568-B)	1.0 m	●	1	2814800010
IE-C5ES8VG0015N40N40-G-K6KV	Patch cable, RJ45	Cat.5 (ISO/IEC 11801) / Cat.5e (TIA T568-B)	1.5 m	●	1	2814800015
IE-C5ES8VG0020N40N40-G-K6KV	Patch cable, RJ45	Cat.5 (ISO/IEC 11801) / Cat.5e (TIA T568-B)	2.0 m	●	1	2814800020
<b>Patch cable orange (CLS)</b>						
IE-C5ES8V0003N40N40-O-K6KV	Patch cable, RJ45	Cat.5 (ISO/IEC 11801) / Cat.5e (TIA T568-B)	0.3 m	●	1	2814850003
IE-C5ES8V0005N40N40-O-K6KV	Patch cable, RJ45	Cat.5 (ISO/IEC 11801) / Cat.5e (TIA T568-B)	0.5 m	●	1	2814850005
IE-C5ES8V0010N40N40-O-K6KV	Patch cable, RJ45	Cat.5 (ISO/IEC 11801) / Cat.5e (TIA T568-B)	1.0 m	●	1	2814850010
IE-C5ES8V0015N40N40-O-K6KV	Patch cable, RJ45	Cat.5 (ISO/IEC 11801) / Cat.5e (TIA T568-B)	1.5 m	●	1	2814850015
IE-C5ES8V0020N40N40-O-K6KV	Patch cable, RJ45	Cat.5 (ISO/IEC 11801) / Cat.5e (TIA T568-B)	2.0 m	●	1	2814850020



## Couplings for Ethernet patch cables Smart Metering

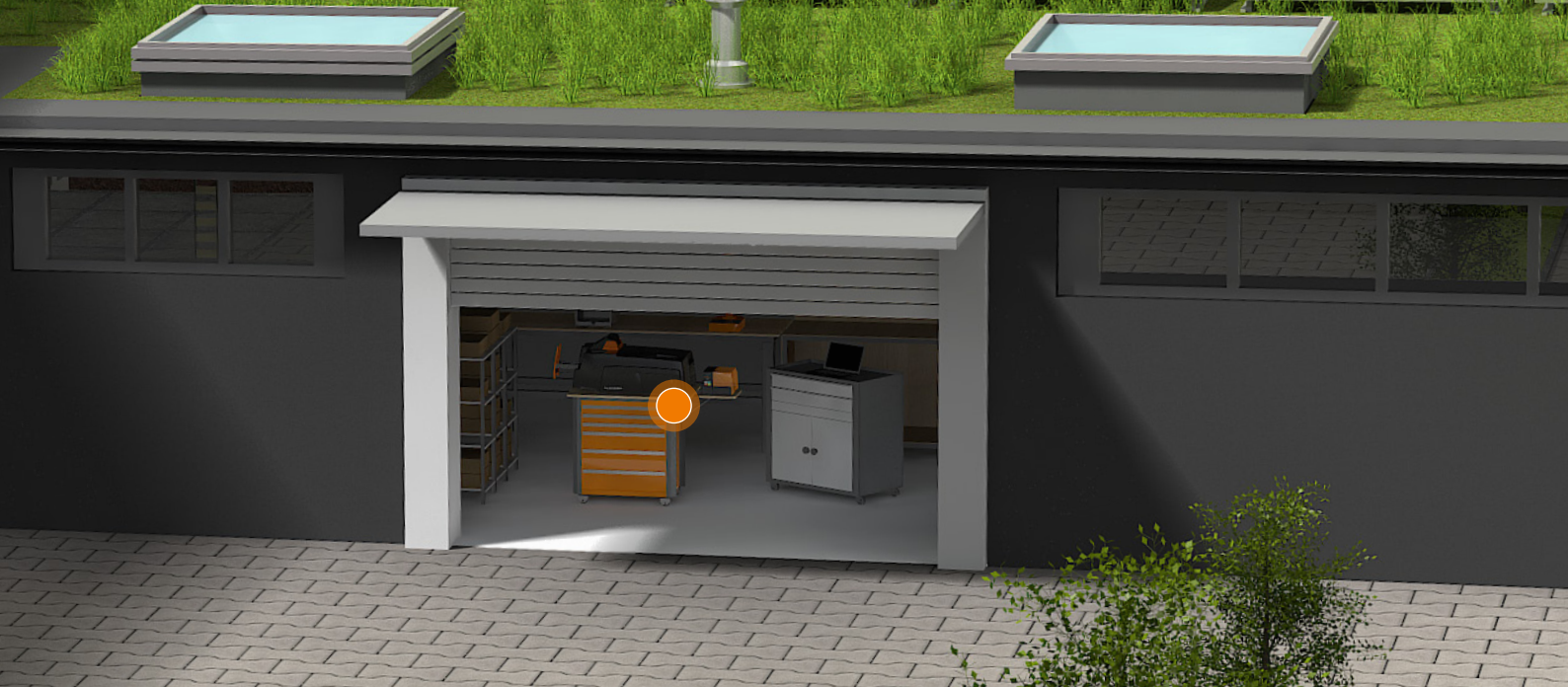
Type	Product type	Note	Qty.	Order No.
IE-TO-RJ45-CLP	Terminal rail outlet, incl. mounting with meter cross, RJ45, coupling, IP20, Cat.6A	Low profile, height 32 mm	10	2812440000
IE-TO-RJ45-CZP-C5	Terminal rail outlet, RJ45, IP20, Cat. 5	Low profile, height 37 mm	10	2819260000
IE-TO-RJ45-C	Terminal rail outlet, RJ45, coupling, IP20, Cat.6A / Class EA (ISO/IEC 11801 2010)	High profile, height 67 mm	10	8946920000



## Power top-hat rail distributor and pluggable energy distributor

Type	Product type	Note	Qty.	Order No.
RS VERT SUPPLY BLL	Mounting rail energy distributor	2-pole, color coded, 230 V, IP 30	10	8000074943
RS VERT SUPPLY BLL_F	Mounting rail energy distributor	2-pole, color coded, 230 V, IP 30	10	8000084731
RS VERT SUPPLY LMF	Mounting rail energy distributor	2-pole, color coded, 230 V, IP 30	10	8000076874
RS VERT SUPPLY LSF-SMT_F	Mounting rail energy distributor	2-pole, color coded, 230 V, IP 30	10	8000091885
Y-INTERFACE BLL	Pluggable double connector	2-pole, color coded, 230 V, IP 30	16	8000075197
Y-INTERFACE SL	Pluggable double connector	2-pole, color coded, 230 V, IP 30	16	8000075198

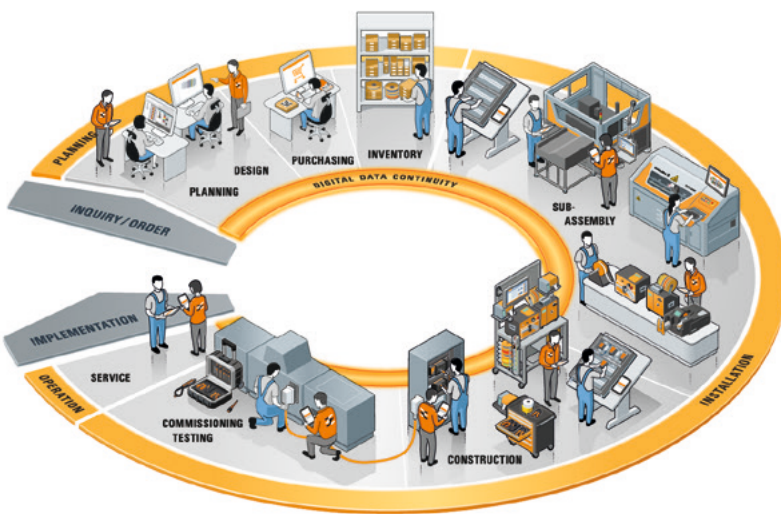




# 2 Workshop

## Optimally equipped for every work phase

Efficient and safe work processes are essential for high competitiveness and long-term success. We support you in every phase of your work with optimally tailored solutions for your workshop. Based on many years of practical experience in panel building, we offer a comprehensive portfolio to effectively speed up your processes and increase your quality. Take a good look at our tools, markers, printers, software, automated systems and panel infrastructure for all work phases – from planning to installation and finally operation.



### Plan

With our software solutions for marking (MPrint® PRO), semi-automated cable assembly (WPC-Tool) and configuration (WMC) you are perfectly equipped in every project phase. Thanks to interfaces to your eCAD system, you profit from the fastest data transfer from planning through to commissioning.

### Operate

The efficiency benefits resulting from the perfect interaction of products and tools from a single source continue long after the panel has been commissioned. For example, our extensive range of measuring and testing tools provides you with dependable support for troubleshooting. Seamless marking of all panel components and the consistent availability of digital data simplify and speed up maintenance work. This helps you reduce downtimes and increase the efficiency of your process steps.

### Installation

We offer tools in certified premium quality, as well as stripping and crimping machines with intuitive operation. A perfectly tailored marking system facilitates time-saving, secure installation. In addition, we offer professional handheld tools, including as economical complete sets along with matching accessories – up to tool trolleys developed fully in accordance with 5S and lean principles.





## SK and TH - Pin spanner sets

Type	Product type	Note	Sizes	Qty.	Order No.
SK WSD-S 1.5-10.0	Hexagon / Allen key - pin spanner set	9 individual spanners in holder	S 1.5 - 10	1	9008850000
SKS 2.0-8.0	Hexagon / Allen key - pin spanner set	7 individual spanners in combination tool	SW 2.0/2.5/3.0/4.0/5.0/6.0/8.0	1	9008860000
SK-S 2.0-8.0 MR	Hexagon / Allen key - pin spanner set	7 individual spanners in combination tool	SW 2.0/2.5/3.0/4.0/5.0/6.0/8.0	1	9008870000
TH-S 9-40	Torx - pin spanner set	8 individual spanners in combination tool	TR 9/10/15/20/25/27/30/40	1	9008880000



## KBZ - VDE-insulated combination pliers

Type	Product type	Note	Length	Qty.	Order No.
KBZ 160	Combination pliers, 160 mm	Protective insulation up to 1000 V AC / 1500 V DC	160 mm	1	9046280000
KBZ 180	Combination pliers, 180 mm	Protective insulation up to 1000 V AC / 1500 V DC	180 mm	1	9046290000
KBZ 200	Combination pliers, 200 mm	Protective insulation up to 1000 V AC / 1500 V DC	200 mm	1	9046300000
KBZI 200	Combination pliers/telegraph pliers, 200 mm	Protective insulation up to 1000 V AC / 1500 V DC	200 mm / powerful combination pliers, heavy-duty model	1	9046430000



## SE and KSE - VDE-insulated diagonal-cutting pliers

Type	Product type	Note	Length	Qty.	Order No.
SE HD 140	Diagonal-cutting pliers 140 mm	Protective insulation up to 1000 V AC / 1500 V DC	140 mm / for hard wire	1	9046310000
SE HD 160	Diagonal-cutting pliers 160 mm	Protective insulation up to 1000 V AC / 1500 V DC	160 mm / for hard wire	1	9046320000
SE HD 180	Diagonal-cutting pliers 180 mm	Protective insulation up to 1000 V AC / 1500 V DC	180 mm / for hard wire	1	9046330000
SE TOP	Precision diagonal-cutting pliers 160 mm	Protective insulation up to 1000 V AC / 1500 V DC	160 mm / for piano wire	1	9046340000
KSE 160	High-power diagonal-cutting pliers 160 mm	Protective insulation up to 1000 V AC / 1500 V DC	160 mm / for piano wire	1	9046410000
KSE 200	High-power diagonal-cutting pliers 200 mm	Protective insulation up to 1000 V AC / 1500 V DC	200 mm / for piano wire	1	9046420000



## FRZ - VDE-insulated telephone pliers

Type	Product type	Note	Length	Qty.	Order No.
FRZ S 160	Straight telephone pliers with cutting edge	Protective insulation up to 1000 V AC / 1500 V DC	160 mm	1	9046370000
FRZ S 200	Straight telephone pliers with cutting edge	Protective insulation up to 1000 V AC / 1500 V DC	200 mm	1	9046380000
FRZ SG 160	Bent telephone pliers with cutter	Protective insulation up to 1000 V AC / 1500 V DC	160 mm / tip bent 45°	1	9046390000
FRZ SG 200	Bent telephone pliers with cutter	Protective insulation up to 1000 V AC / 1500 V DC	200 mm / tip bent 45°	1	9046400000



## FZ and RZ - VDE-insulated flat- and round-nose pliers

Type	Product type	Note	Length	Qty.	Order No.
FZ 160	Flat-nose pliers with long mouth	Protective insulation up to 1000 V AC / 1500 V DC	160 mm	1	9046350000
RZ 160	Round-nose pliers with long mouth	Protective insulation up to 1000 V AC / 1500 V DC	160 mm	1	9046360000



## AIZ 160 - VDE-insulated stripping tool

Type	Product type	Length	Qty.	Order No.
AIZ 160	Stripping cables and individual wires with an outer diameter of up to 5 mm	160 mm	1	9046440000



## Strippers and slicers - Cable sheathing strippers and cable knives

Type	Product type	for cable type	Conductor diameter	Qty.	Order No.
STRIPPER ROUND TOP	Round cable stripper	Conductors with PVC insulation	8...13 mm	1	9918050000
STRIPPER ROUND	Round cable stripper with individual wire stripper	Conductors with PVC insulation	8...13 mm	1	9918040000
STRIPPER PC	Special cable sheathing stripper	Data cable / telecommunications and IT	5...15 mm	1	9918060000
Stripper Coax	Special cable sheathing stripper	Coaxial data and round cables	4.8...7.5 mm	1	9918030000
SLICER NO 16	Knife	Conductors with PVC insulation	4...16 mm	1	9918070000
SLICER NO 27	Knife	Conductors with PVC insulation	8...28 mm	1	9918080000



## KT - Cutting tools

Type	Maximum cutting performance	Copper finely stranded	Aluminium stranded	Qty.	Order No.
KT 8	16 mm <sup>2</sup>	16 mm <sup>2</sup>	16 mm <sup>2</sup>	1	9002650000
KT 12	25 mm <sup>2</sup>	35 mm <sup>2</sup>	16 mm <sup>2</sup>	1	9002660000
KT 22	95 mm <sup>2</sup>	95 mm <sup>2</sup>	50 mm <sup>2</sup>	1	1157830000
KT 45 R	300 mm <sup>2</sup>	400 mm <sup>2</sup>	400 mm <sup>2</sup>	1	9202040000
KT 55	500 mm <sup>2</sup>	500 mm <sup>2</sup>	500 mm <sup>2</sup>	1	9202060000



## stripax® - Stripping tools

Type	Conductor cross-section	Stripping length, max.	Cable type	Qty.	Order No.
STRIPAX	0.08 - 10 mm <sup>2</sup>	20 mm	Fine wire and solid conductors	1	9005000000
STRIPAX 16	6 - 16 mm <sup>2</sup>	20 mm	Fine wire and solid conductors	1	9005610000



## AM - Sheathing strippers

Type	Sheathing stripper for:	Conductor diameter min. / max.	Cut depth	Qty.	Order No.
AM 12	UTP and STP data cables	1...12.5 mm	Adjustable	1	9030060000
AM 16	PVC round cable	5...17 mm	adjustable up to 4.0 mm	1	9204190000
AM 25	PVC round cable	6...25 mm	adjustable up to 4.5 mm	1	9001540000
AM35	PVC round cable	25...36 mm	adjustable up to 4.5 mm	1	9001080000
AM-X	PVC round cable	25...299 mm	adjustable up to 4.5 mm	1	2625720000



## PZ - Crimping tools

Type	for	Length	Weight	Qty.	Order No.
PZ 6 roto	AEH from 0.14 - 6 mm <sup>2</sup>	200 mm	428 grams	1	9014350000
PZ 10 HEX	AEH from 0.14 - 10 mm <sup>2</sup>	195 mm	600 grams	1	1445070000
PZ 16	AEH from 6 - 16 mm <sup>2</sup>	200 mm	418 grams	1	9012600000



## VT - Voltage tester

Type	Test voltage	Continuity testing	Display	Qty.	Order No.
VT Digi Pro	1 - 1000 V AC/DC	Yes - visual + acoustic	LCD digital display	1	9918870000
VT Master	12, 24, 50, 120, 230, 400, 690 V AC/DC	Yes - visual + acoustic	LED display	1	9918880000
VT Combi Pro	6, 12, 24, 50, 120, 230, 400, 690 V AC/DC	Yes - visual + acoustic	LED display	1	9918860000
VT	12, 50, 120, 230, 400, 690 V AC/DC	No	-	1	9918950000



## VT Tester

Type	Rated voltage	Functions	Display	Qty.	Order No.
VT CL	50 V - 1000 V AC/DC	Non-contact voltage tester	Visual & acoustic	1	2436660000
VT LCL	12 V - 1000 V AC/DC	Non-contact voltage tester	Visual & acoustic	1	2436670000
VT M	-	Magnetic field display	Visual & acoustic	1	2436680000



## Uninsulated screwdriver

Type	Design	Blade length	Qty.	Order No.
SD SET S2.5-5.5/PH1/2	6-piece set: slotted and crosshead PH screwdriver set with circular blades	2.5 - 5.5 / PH1 / 2	1	2749200000
SD SET S2.0-5.5	6-piece set: slotted screwdriver set	2 - 5.5	1	2749220000
SD Set T10/15/20/25/30/40 TR	6-Piece set: Torx® TR screwdriver set	T10 / 15 / 20 / 25 / 30 / 40	1	2749230000



## SlimLine screwdriver insulated acc. to VDE specs

Type	Design	Blade length	Qty.	Order No.
SDI SET SLIM S3.5-6.5/PH1/2	6-piece set: VDE-insulated slotted and crosshead PH screwdriver set	S3.5 - 6.5 / PH1 / 2	1	2749580000
SDI SET SLIM S3.5-6.5/PZ1/2	6-piece set: VDE-insulated slotted and crosshead PZ screwdriver set	S3.5 - 6.5 / PZ1 / 2	1	2749590000
SDI SET SLIM T8/T9/T10/T15/T20/T25	6 piece set: VDE insulated Torx®-screwdriver set	T8 / T9 / T10 / T15 / T20 / T25	1	2749600000



## Screwdriver insulated according to VDE spec.

Type	Design	Blade length	Qty.	Order No.
SDI SET S2.5-5.5/PH1/2	6-piece set: VDE-insulated slotted and crosshead PH screwdriver set	S2.5 - 5.5 / PH1 / 2	1	2749750000
SDI SET S2.5-5.5/PZ1/2	6-piece set: VDE-insulated slotted and crosshead PZ screwdriver set	S2.5 - 5.5 / PZ1 / 2	1	2749760000
SDI SET S2.0-5.5	6-piece set: VDE-insulated slotted screwdriver set	S2.0 - 5.5	1	2749770000



## LM MT300 - Device marker

Type	Label dimensions (height x width)	Number of labels per sheet	Colour / material	Qty.	Order No.
LM MT300 15/6 WS	6 x 15.2 mm	484	○ / Polyester	10	1686361044
LM MT300 15/6 GE	6 x 15.2 mm	484	● / Polyester	10	1686361687
LM MT300 17/9 WS	9 x 17.8 mm	341	○ / Polyester	10	1724151044
LM MT300 17/9 GE	9 x 17.8 mm	341	● / Polyester	10	1724151687
LM MT300 20/8 WS	8 x 20.3 mm	264	○ / Polyester	10	1686381044
LM MT300 20/8 GE	8 x 20.3 mm	264	● / Polyester	10	1686381687
LM MT300 26/10 WS	10 x 26 mm	156	○ / Polyester	10	1686401044
LM MT300 26/10 GE	10 x 26 mm	156	● / Polyester	10	1686401687
LM MT300 56/22 WS	22 x 56 mm	36	○ / Polyester	10	1686421044
LM MT300 56/22 GE	22 x 56 mm	36	● / Polyester	10	1686421687



## WriteOn - Wire markers

Type	Wire cross-section, min. / max./ writing field size	Number per sheet	Colour / material	Qty.	Order No.
LM WO 18/34 WS	6 - 16 mm <sup>2</sup> / 18 x 12.7 mm	88	○ / Polyester	10	1695711044
LM WO 18/34 GE	6 - 16 mm <sup>2</sup> / 18 x 12.7 mm	88	● / Polyester	10	1695711687
LM WO 23/55 WS	10 - 50 mm <sup>2</sup> / 23 x 12.7 mm	40	○ / Polyester	10	1695721044
LM WO 23/55 GE	10 - 50 mm <sup>2</sup> / 23 x 12.7 mm	40	● / Polyester	10	1695721687
LM WO 15/70 WS	15 - 50 mm <sup>2</sup> / 15 x 30 mm	52	○ / Polyester	10	1759871044
LM WO 25/68 WS	16 - 70 mm <sup>2</sup> / 25 x 17 mm	28	○ / Polyester	10	1695731044
LM WO 25/68 GE	16 - 70 mm <sup>2</sup> / 25 x 17 mm	28	● / Polyester	10	1695731687
LM WO 36/93 WS	25 - 120 mm <sup>2</sup> / 36 x 25 mm	15	○ / Polyester	10	1695741044
LM WO 36/93 GE	25 - 120 mm <sup>2</sup> / 36 x 25 mm	15	● / Polyester	10	1695741687
LM WO 15/140 WS	70 - 150 mm <sup>2</sup> / 15 x 70 mm	26	○ / Polyester	10	1773880000
LM WO 25/140 WS	70 - 150 mm <sup>2</sup> / 25 x 26 mm	16	○ / Polyester	10	1712491044
LM WO 25/140 GE	70 - 150 mm <sup>2</sup> / 25 x 26 mm	16	● / Polyester	10	1712491687



## WKM - Cable markers

Type	Dimensions (height x width)	Inlay tag / protective strips	Colour	Qty.	Order No.
<b>Markers WKM</b>					
WKM 8/20	8 x 20 mm	ESO 8 / 20 ...	transparent	50	1753490000
WKM 8/30	8 x 30 mm	ESO 7 ...	transparent	50	1631910000
WKM 18/43	18 x 43 mm	ESO 5 ...	transparent	50	1610700000
<b>Accessories WKM</b>					
ESO 8/20 DIN A4 WS	7 x 20 mm	Insert markers for WKM 8/20	○	10	1919890000
ESO 7 DIN A4 WS	6.3 x 27.3 mm	Insert marker for EM 8/30 & WKM 8/30	○	10	1607720000
ESO 5 DIN A4 WS	16.5 x 40 mm	Insert markers for SCH 5 & WKM 18/43	○	10	1607710000
STI Waterproof black	Felt pen	Marking by hand	●	10	0508401694



## MultiMark - Thermal transfer printer

Type	Design	Qty.	Order No.
<b>For printing MultiMark markers, shrink sleeves, label rolls, etc.</b>			
THM MULTIMARK	Marking systems, thermal transfer printer, thermal transfer, 300 DPI, MultiMark, shrink sleeves, label rolls	1	2599430000



## DEK and WS - THM terminal marker

Type	Dimensions (height x width)	Design	Colour	Qty.	Order No.
DEK 5/5 MM WS	5 x 5 mm	Clip-in foot	○	800	2007110000
WS 8/5 MM WS	8 x 5 mm	Clip-in foot	○	800	2007150000
WS 12/5 MM WS	12 x 5 mm	Clip-in foot	○	800	2007190000



## MT30X - THM device markers

Type	Dimensions (height x width)	Design	Colour / material	Qty.	Order No.
THM MT30X 15/6 GE	6 x 15 mm	self-adhesive	● / Polyester	1	1753231687
THM MT30X 15/6 WS	6 x 15 mm	self-adhesive	○ / Polyester	1	1753231044
THM MT30X 18/6 GE	6 x 18 mm	self-adhesive	● / Polyester	1	1753271687
THM MT30X 18/6 WS	6 x 18 mm	self-adhesive	○ / Polyester	1	1753271044
THM MT30X 20/8 GE	8 x 20 mm	self-adhesive	● / Polyester	1	1753241687
THM MT30X 20/8 WS	8 x 20 mm	self-adhesive	○ / Polyester	1	1753241044
THM MT30X 45/23 GE	23 x 45 mm	self-adhesive	● / Polyester	1	1751811687
THM MT30X 45/23 SI	23 x 45 mm	self-adhesive	● / Polyester	1	1751810001
THM MT30X 45/23 WS	23 x 45 mm	self-adhesive	○ / Polyester	1	1751811044
THM MT30X 101/48 GE	48 x 101 mm	self-adhesive	● / Polyester	1	1751821687
THM MT30X 101/48 SI	48 x 101 mm	self-adhesive	● / Polyester	1	1751820001
THM MT30X 101/48 WS	48 x 101 mm	self-adhesive	○ / Polyester	1	1751821044
THM MT30X 101/74 GE	48 x 101 mm	self-adhesive	● / Polyester	1	1061810000
THM MT30X 101/74 SI	48 x 101 mm	self-adhesive	● / Polyester	1	1762960001
THM MT30X 101/74 WS	48 x 101 mm	self-adhesive	○ / Polyester	500	2455620000



## MT30X - THM conductor wire & cable markers

Type	Dimensions (height x width)	Writing field / version	Colour	Qty.	Order No.
THM WO 12/18 GE	12 x 18 mm	12 x 9 mm	●	1	1856630000
THM WO 12/18 WS	12 x 18 mm	12 x 9 mm	○	1	1856640000
THM WO 25/140 GE	25 x 140 mm	26 x 25 mm	●	1	17741561687
THM WO 25/140 WS	25 x 140 mm	26 x 25 mm	○	1	1751561044
THM WO 25/76 GE	25 x 76 mm	15 x 25 mm	●	1	1774340000
THM WO 25/76 WS	25 x 76 mm	15 x 25 mm	○	1	1774350000
THM WO 33.5/93.1 GE	33.5 x 93.1 mm	35.6 x 25 mm	●	1	1774410000
THM WO 33.5/93.1 WS	33.5 x 93.1 mm	35.6 x 25 mm	○	1	1774400000







# 3 Photovoltaics

## Easy, fast and safe installation of rooftop PV systems

The share of energy from renewable sources is growing. Rooftop PV systems are playing an ever larger role in the planned energy transition. We offer a comprehensive range of products to ensure you can install your system easily. These include combiner boxes, surge protection systems, connectors, tools, and components for installing and protecting your rooftop PV system. All of our products are standardised, and were developed to make your installation projects easier, faster, and safer.



### PV Next combiner box

- Standardised and scalable: up to 6 inputs/outputs and 12 MPPs
- Easy installation thanks to PUSH IN wire connection
- Suitable for all commonly available inverters up to 1100V

You can find the right PV Next combiner box for your inverter at:  
[www.weidmueller.com/pv-perfect-match](http://www.weidmueller.com/pv-perfect-match)



### PV Protect OVP box

- Compact, space-saving design
- Available in product variants suitable for different applications
- Ready to connect solution with protection class IP67
- Quick and reliable PUSH IN wire connection



## PV Next combiner boxes for commercial PV systems

Type	MPP	Inputs per MPP	Outputs per MPP	Surge protection requirement class	Connection	Qty.	Order No.
<b>Commercial PV systems - No fuse holder, no switch disconnecter</b>							
PVN1M2I6SXFXV100TXPX10	2 MPP	3 inputs	3 outputs	Type: I / II	Cable gland, PUSH IN connection	1	2683120000
PVN1M2I6SXFXV101TXPX10	2 MPP	3 inputs	3 outputs	Type: I / II	Connector, WM4C	1	2683180000
PVN1M2I6SXFXV200TXPX10	2 MPP	3 inputs	3 outputs	Type: II	Cable gland, PUSH IN connection	1	2683320000
PVN1M2I6SXFXV201TXPX10	2 MPP	3 inputs	3 outputs	Type: II	Connector, WM4C	1	2683380000
PVN1M3I9SXFXV100TXPX10	3 MPP	3 inputs	3 outputs	Type: I / II	Cable gland, PUSH IN connection	1	2683130000
PVN1M3I9SXFXV101TXPX10	3 MPP	3 inputs	3 outputs	Type: I / II	Connector, WM4C	1	2683190000
PVN1M3I9SXFXV200TXPX10	3 MPP	3 inputs	3 outputs	Type: II	Cable gland, PUSH IN connection	1	2683330000
PVN1M3I9SXFXV201TXPX10	3 MPP	3 inputs	3 outputs	Type: II	Connector, WM4C	1	2683390000
PVN1M4I8SXFXV101TXPX10	4 MPP	2 inputs	1 output	Type: I / II	Connector, WM4C	1	2737600000
PVN1M4I8SXFXV100TXPX10	4 MPP	2 inputs	1 output	Type: I / II	Cable gland, PUSH IN connection	1	2737610000
PVN1M4I8SXFXV201TXPX10	4 MPP	2 inputs	1 output	Type: II	Connector, WM4C	1	2791880000
PVN1M4I8SXFXV200TXPX10	4 MPP	2 inputs	1 output	Type: II	Cable gland, PUSH IN connection	1	2791890000
PVN1M6I12SXFXV101TXPX10	6 MPP	2 inputs	1 output	Type: I / II	Connector, WM4C	1	2737620000
PVN1M6I12SXFXV100TXPX10	6 MPP	2 inputs	1 output	Type: I / II	Cable gland, PUSH IN connection	1	2737630000
PVN1M6I12SXFXV201TXPX10	6 MPP	2 inputs	1 output	Type: II	Connector, WM4C	1	2791900000
PVN1M6I12SXFXV200TXPX10	6 MPP	2 inputs	1 output	Type: II	Cable gland, PUSH IN connection	1	2791910000
PVC 2I 10 10MPP SPD1R EVO 11	10 MPP	2 input	1 output	Type: I/II	Connector, MC4 EVO 2	1	8000106274
PVC 2I 20 10MPP SPD1R EVO 11	10 MPP	2 input	2 outputs	Type: I/II	Connector, MC4 EVO 2	1	8000107559
PVC 2I 10 12MPP SPD1R EVO 11	12 MPP	2 input	1 output	Type: I/II	Connector, MC4 EVO 2	1	8000107558
<b>Commercial PV systems - No fuse holder, with switch disconnecter</b>							
PVN1M2I6SOFXV100TXPX10	2 MPP	3 inputs	3 outputs	Type: I / II	Cable gland, PUSH IN connection	1	2683150000
PVN1M2I6SOFXV101TXPX10	2 MPP	3 inputs	3 outputs	Type: I / II	Connector, WM4C	1	2683210000
PVN1M2I6SOFXV200TXPX10	2 MPP	3 inputs	3 outputs	Type: II	Cable gland, PUSH IN connection	1	2683350000
PVN1M2I6SOFXV201TXPX10	2 MPP	3 inputs	3 outputs	Type: II	Connector, WM4C	1	2683410000
PVN1M3I9SOFXV100TXPX10	3 MPP	3 inputs	3 outputs	Type: I / II	Cable gland, PUSH IN connection	1	2683160000
PVN1M3I9SOFXV101TXPX10	3 MPP	3 inputs	3 outputs	Type: I / II	Connector, WM4C	1	2683220000
PVN1M3I9SOFXV200TXPX10	3 MPP	3 inputs	3 outputs	Type: II	Cable gland, PUSH IN connection	1	2683360000
PVN1M3I9SOFXV201TXPX10	3 MPP	3 inputs	3 outputs	Type: II	Connector, WM4C	1	2683420000
<b>Commercial PV systems - With fuse holder, no switch disconnecter</b>							
PVN1M2I6SXF3V100TXPX10	2 MPP	3 inputs	3 outputs	Type: I / II	Cable gland, PUSH IN connection	1	2683040000
PVN1M2I6SXF3V101TXPX10	2 MPP	3 inputs	3 outputs	Type: I / II	Connector, WM4C	1	2683080000
PVN1M2I6SXF3V200TXPX10	2 MPP	3 inputs	3 outputs	Type: II	Cable gland, PUSH IN connection	1	2683240000
PVN1M2I6SXF3V201TXPX10	2 MPP	3 inputs	3 outputs	Type: II	Connector, WM4C	1	2683280000
PVN1M1I6SXF3V101TXPX10	1 MPP	6 inputs	6 outputs	Type: I / II	Connector, WM4C	1	2737440000
PVN1M1I6SXF3V001TXPX10	1 MPP	6 inputs	6 outputs	Type: II	Connector, WM4C	1	2737490000
PVN1M1I6SXF3V100TXPX10	1 MPP	6 inputs	6 outputs	Type: I / II	Cable gland, PUSH IN connection	1	2737520000
PVN1M1I6SXF3V000TXPX10	1 MPP	6 inputs	6 outputs	Type: II	Cable gland, PUSH IN connection	1	2737540000
<b>Commercial PV systems - With fuse holder, with switch disconnecter</b>							
PVN1M2I6SOF3V100TXPX10	2 MPP	3 inputs	3 outputs	Type: I / II	Cable gland, PUSH IN connection	1	2683060000
PVN1M2I6SOF3V101TXPX10	2 MPP	3 inputs	3 outputs	Type: I / II	Connector, WM4C	1	2683100000
PVN1M2I6SOF3V200TXPX10	2 MPP	3 inputs	3 outputs	Type: II	Cable gland, PUSH IN connection	1	2683260000
PVN1M2I6SOF3V201TXPX10	2 MPP	3 inputs	3 outputs	Type: II	Connector, WM4C	1	2683300000
PVN1M1I6SOF3V101TXPX10	1 MPP	6 inputs	6 outputs	Type: I / II	Connector, WM4C	1	2737480000
PVN1M1I6SOF3V001TXPX10	1 MPP	6 inputs	6 outputs	Type: II	Connector, WM4C	1	2737500000
PVN1M1I6SOF3V100TXPX10	1 MPP	6 inputs	6 outputs	Type: I / II	Cable gland, PUSH IN connection	1	2737530000
PVN1M1I6SOF3V000TXPX10	1 MPP	6 inputs	6 outputs	Type: II	Cable gland, PUSH IN connection	1	2737550000
<b>PV systems in residential buildings - No fuse holder, no switch-disconnector</b>							
PVN1M1I2SXFV101TXPX11	1 MPP	2 inputs	1 output	Type: I / II	Connector, WM4C	1	2791920000
PVN1M1I2SXFV102TXPX11	1 MPP	2 inputs	1 output	Type: I / II	Connector, MC4-Evo 2	1	2866300000
PVN1M1I2SXFV100TXPX11	1 MPP	2 inputs	1 output	Type: I / II	Cable gland, PUSH IN connection	1	2791930000
PVN1M1I2SXFV201TXPX11	1 MPP	2 inputs	1 output	Type: II	Connector, WM4C	1	2791940000
PVN1M1I2SXFV202TXPX11	1 MPP	2 inputs	1 output	Type: II	Connector, MC4-Evo 2	1	2866310000
PVN1M1I2SXFV200TXPX11	1 MPP	2 inputs	1 output	Type: II	Cable gland, PUSH IN connection	1	2791950000
PVN1M1I3SXFV100TXPX10	1 MPP	3 inputs	3 outputs	Type: I / II	Cable gland, PUSH IN connection	1	2683110000
PVN1M1I3SXFV101TXPX10	1 MPP	3 inputs	3 outputs	Type: I / II	Connector, WM4C	1	2683170000
PVN1M1I3SXFV200TXPX10	1 MPP	3 inputs	3 outputs	Type: II	Cable gland, PUSH IN connection	1	2683310000
PVN1M1I3SXFV201TXPX10	1 MPP	3 inputs	3 outputs	Type: II	Connector, WM4C	1	2683370000
PVN DC 2IN/10UTX2 2MPP SPD1R WM4C 1.1KV	2 MPP	2 inputs	1 output	Type: I / II	Connector, WM4C	1	2866340000
PVN DC 2IN/10UTX2 2MPP SPD1R EVO 1.1KV	2 MPP	2 inputs	1 output	Type: I / II	Connector, MC4-Evo 2	1	2866360000
PVN DC 2IN/10UTX2 2MPP SPD1R CG 1.1KV	2 MPP	2 inputs	1 output	Type: I / II	Cable gland, PUSH IN connection	1	2866320000
PVN DC 2IN/10UTX2 2MPP SPD2R WM4C 1.1KV	2 MPP	2 inputs	1 output	Type: II	Connector, WM4C	1	2866350000
PVN DC 2IN/10UTX2 2MPP SPD2R EVO 1.1KV	2 MPP	2 inputs	1 output	Type: II	Connector, MC4-Evo 2	1	2866370000
PVN DC 2IN/10UTX2 2MPP SPD2R CG 1.1KV	2 MPP	2 inputs	1 output	Type: II	Cable gland, PUSH IN connection	1	2866330000
<b>PV systems in residential buildings - No fuse holder, with switch-disconnector</b>							
PVN1M1I3SOFXV100TXPX10	1 MPP	3 inputs	3 outputs	Type: I / II	Cable gland, PUSH IN connection	1	2683140000
PVN1M1I3SOFXV101TXPX10	1 MPP	3 inputs	3 outputs	Type: I / II	Connector, WM4C	1	2683200000
PVN1M1I3SOFXV200TXPX10	1 MPP	3 inputs	3 outputs	Type: II	Cable gland, PUSH IN connection	1	2683340000
PVN1M1I3SOFXV201TXPX10	1 MPP	3 inputs	3 outputs	Type: II	Connector, WM4C	1	2683400000
<b>PV systems in residential buildings - With fuse holder, no switch-disconnector</b>							
PVN1M1I3SXF3V100TXPX10	1 MPP	3 inputs	3 outputs	Type: I / II	Cable gland, PUSH IN connection	1	2683030000
PVN1M1I3SXF3V101TXPX10	1 MPP	3 inputs	3 outputs	Type: I / II	Connector, WM4C	1	2683070000
PVN1M1I3SXF3V200TXPX10	1 MPP	3 inputs	3 outputs	Type: II	Cable gland, PUSH IN connection	1	2683230000
PVN1M1I3SXF3V201TXPX10	1 MPP	3 inputs	3 outputs	Type: II	Connector, WM4C	1	2683270000
<b>PV systems in residential buildings - With fuse holder, with switch-disconnector</b>							
PVN1M1I3SOF3V100TXPX10	1 MPP	3 inputs	3 outputs	Type: I / II	Cable gland, PUSH IN connection	1	2683050000
PVN1M1I3SOF3V101TXPX10	1 MPP	3 inputs	3 outputs	Type: I / II	Connector, WM4C	1	2683090000
PVN1M1I3SOF3V200TXPX10	1 MPP	3 inputs	3 outputs	Type: II	Cable gland, PUSH IN connection	1	2683250000
PVN1M1I3SOF3V201TXPX10	1 MPP	3 inputs	3 outputs	Type: II	Connector, WM4C	1	2683290000



## PV Stick - Photovoltaic connector

Type	Rated voltage (IEC) Rated current	Connection cross-section min. / max.	Continuous operating temperature min. / max.	Qty.	Order No.
<b>Female socket</b>					
PV-STICK+ VPE10	1500 V DC / 30 A	4 / 6 mm <sup>2</sup>	-40 °C...+ 85 °C	10	1303450000
PV-STICK+ VPE50	1500 V DC / 30 A	4 / 6 mm <sup>2</sup>	-40 °C...+ 85 °C	50	1303460000
PV-STICK+ VPE200	1500 V DC / 30 A	4 / 6 mm <sup>2</sup>	-40 °C...+ 85 °C	200	1303470000
<b>Pin</b>					
PV-STICK- VPE10	1500 V DC / 30 A	4 / 6 mm <sup>2</sup>	-40 °C...+ 85 °C	10	1303490000
PV-STICK- VPE50	1500 V DC / 30 A	4 / 6 mm <sup>2</sup>	-40 °C...+ 85 °C	50	1303500000
PV-STICK- VPE200	1500 V DC / 30 A	4 / 6 mm <sup>2</sup>	-40 °C...+ 85 °C	200	1303510000
<b>PV-Stick-Set</b>					
PV-STICK SET	1500 V DC / 30 A	4 / 6 mm <sup>2</sup>	-40 °C...+ 85 °C	1	1422030000



## WM 4 C - Box-connector

Type	Rated voltage / current	Conductor cross-section	Connection	Qty.	Order No.
<b>Male housing</b>					
SFGH BOX WM4 C BT	1100 V DC (IEC) / 35.00 A	4 / 6 mm <sup>2</sup>	M 12 housing cable gland	100	1530640000
<b>Socket housing with M12 cable gland</b>					
BUGH BOX WM4 C BT	1100 V DC (IEC) / 35.00 A	4 / 6 mm <sup>2</sup>	M 12 housing cable gland	100	1530630000
<b>Accessories</b>					
BUKO WM4 C BT	Female contact	4 and 6 mm <sup>2</sup> cables	Loose goods for crimping tools	100	1530670000
BUKO WM4 C RL	Female contact	4 and 6 mm <sup>2</sup> cables	Reel packaged goods for automated crimping	1500	1530770000
SFKO WM4 C BT	Male contact	4 and 6 mm <sup>2</sup> cables	Loose goods for crimping tools	100	1530680000
SFKO WM4 C RL	Male contact	4 and 6 mm <sup>2</sup> cables	Reel packaged goods for automated crimping	1500	1530780000



## multi-stripax® PV

Type	Cutting	Stripping	Qty.	Order No.
MULTI-STRIPAX PV	2.5, 4.0 and 6 mm <sup>2</sup>	2.5, 4.0 and 6 mm <sup>2</sup>	1	1190490000



## CTF PV WM4 crimping tool

Type	Crimping	Description	Qty.	Order No.
CTF PV WM4	1.5 - 6 mm <sup>2</sup>	Crimping tool for Weidmüller photovoltaic connector WM4 and plugs with the same design	1	1222870000



## 10x38 gPV fuse cartridges silver-plated contacts for PV applications

Type	Voltage / Current	Power loss	Switching capacity	Qty.	Order No.
FUSE 10X38 1A 1000 VDC GPV	1000 V DC / 1 A	2.2 W	30 kA	10	2783160000
FUSE 10X38 2A 1000 VDC GPV	1000 V DC / 2 A	2.4 W	30 kA	10	2783170000
FUSE 10X38 3A 1000 VDC GPV	1000 V DC / 3 A	2.65 W	30 kA	10	2783180000
FUSE 10X38 4A 1000 VDC GPV	1000 V DC / 4 A	2.7 W	30 kA	10	2783190000
FUSE 10X38 5A 1000 VDC GPV	1000 V DC / 5 A	0.76 W	30 kA	10	2783200000
FUSE 10X38 6A 1000 VDC GPV	1000 V DC / 6 A	3.2 W	30 kA	10	2783210000
FUSE 10X38 8A 1000 VDC GPV	1000 V DC / 8 A	1.45 W	30 kA	10	2783220000
FUSE 10X38 10A 1000 VDC GPV	1000 V DC / 10 A	1.66 W	30 kA	10	2783230000
FUSE 10X38 12A 1000 VDC GPV	1000 V DC / 12 A	1.57 W	30 kA	10	2783240000
FUSE 10X38 15A 1000 VDC GPV	1000 V DC / 15 A	1.65 W	30 kA	10	2783250000
FUSE 10X38 16A 1000 VDC GPV	1000 V DC / 16 A	1.84 W	30 kA	10	2783260000
FUSE 10X38 20A 1000 VDC GPV	1000 V DC / 20 A	2 W	30 kA	10	2783280000



## PV Protect

Type	MPPTs, input	Surge protection requirement class	Connection	Qty.	Order No.
<b>1000 Volt design</b>					
VPUM111SXFV100TXPX10	1 MPPT, 1 Input per MPPT	Type I+II	Cable gland, PUSH IN connection	1	2755970000
VPUM111SXFV101TXPX10	1 MPPT, 1 Input per MPPT	Type I+II	Connector, WM4C	1	2764140000
VPUM111SXFV200TXPX10	1 MPPT, 1 Input per MPPT	Type II	Cable gland, PUSH IN connection	1	2755950000
VPUM111SXFV201TXPX10	1 MPPT, 1 Input per MPPT	Type II	Connector, WM4C	1	2764110000
VPUM212SXFV100TXPX10	2 MPPT, 1 Input per MPPT	Type I+II	Cable gland, PUSH IN connection	1	2755980000
VPUM212SXFV101TXPX10	2 MPPT, 1 Input per MPPT	Type I+II	Connector, WM4C	1	2764150000
VPUM212SXFV200TXPX10	2 MPPT, 1 Input per MPPT	Type II	Cable gland, PUSH IN connection	1	2755960000
VPUM212SXFV201TXPX10	2 MPPT, 1 Input per MPPT	Type II	Connector, WM4C	1	2764130000
<b>1500 Volt design</b>					
VPUM111SXFV200TXPX15	1 MPPT, 1 Input per MPPT	Type II	Cable gland, PUSH IN connection	1	2755990000
VPUM111SXFV201TXPX15	1 MPPT, 1 Input per MPPT	Type II	Connector, WM4C	1	2764160000
VPUM212SXFV200TXPX15	2 MPPT, 1 Input per MPPT	Type II	Cable gland, PUSH IN connection	1	2756000000
VPUM212SXFV201TXPX15	2 MPPT, 1 Input per MPPT	Type II	Connector, WM4C	1	2764180000





## Y cable / X cable

Type	Power input 1/ input 2	Power output	Pin connection	Qty.	Order No.
<b>Y connection cable</b>					
PVHYW-XXW+XX06W+15	WM4C -	WM4C +	WM4C +	1	2814180000
PVHYW+XXW-XX06W-15	WM4C +	WM4C -	WM4C -	1	2814190000
PVHYM-XXW+XX06M+15	MC4 -	MC4 +	WM4C +	1	2814200000
PVHYM+XXW-XX06M-15	MC4 +	MC4 -	WM4C -	1	2814210000
PVHYW-XXPXX06W+15	WM4C -	WM4C +	Partially stripped	1	2814220000
<b>X connection cable</b>					
PVHXW-W-W+XX06W+15	WM4C -	WM4C +	WM4C +	1	2814240000
PVHXW+W+W-XX06W-15	WM4C +	WM4C -	WM4C -	1	2814250000
PVHXM-M-W+XX06M+15	MC4 -	MC4 +	WM4C +	1	2814260000
PVHXM+M+W-XX06M-15	MC4 +	MC4 -	WM4C -	1	2814270000
PVHXW-W-PXX06W+15	WM4C -	WM4C +	Partially stripped	1	2814280000
PVHXW+W+PXX06M-15	WM4C +	WM4C -	Partially stripped	1	2814290000



## PV Next Fireman Switch

Type	MPP	Inputs per MPP	Outputs per MPP	Current per box	Connection	Qty.	Order No.
PVN1M1I2S1FXVX01TXPX10	1 MPP	2 inputs	1 output	34A	Connector, WM4C	1	2778860000
PVN1M1I2S1FXVX02TXPX11	1 MPP	2 inputs	1 output	34A	Connector, MC4 EVO 2	1	2888520000
PVN1M1I2S1FXVX00TXPX10	1 MPP	2 inputs	1 output	50A	Cable gland, PUSH IN connection	1	2778850000
PVN1M2I4S1FXVX01TXPX10	2 MPP	2 inputs	1 output	2x 34A	Connector, WM4C	1	2778880000
PVN1M2I4S1FXVX02TXPX11	2 MPP	2 inputs	1 output	2x 34A	Connector, MC4 EVO 2	1	2888530000
PVN1M2I4S1FXVX00TXPX10	2 MPP	2 inputs	1 output	2x 50A	Cable gland, PUSH IN connection	1	2778870000
<b>With SPD, Type I+II</b>							
PVC 2I 10 2MPP RD SPD1R EVO 11	2 MPP	2 inputs	1 output	-	Connector, MC4 EVO 2	1	8000098970



## VPU I+II / VPU II - lightning and surge protection for PV systems

Type	Rated voltage / discharge current	Version	Network	Qty.	Order No.
<b>Requirements class: Type I+II</b>					
VPU PV I+II 3 1000	1000 V / 40 kA	without remote signalling contact	2 horizontal pitches	1	2530610000
VPU PV I+II 3 R 1000	1000 V / 40 kA	with remote signalling contact	2 horizontal pitches	1	2530620000
VPU PV I+II 3 1500	1500 V / 30 kA	without remote signalling contact	3 horizontal pitches	1	2530580000
VPU PV I+II 3 R 1500	1500 V / 30 kA	with remote signalling contact	3 horizontal pitches	1	2530590000
<b>Requirements class: Type II</b>					
VPU II 2 PV 600V DC	600 V / 40 kA	without remote signalling contact	2 horizontal pitches	1	1351340000
VPU II 2 R PV 600V DC	600 V / 40 kA	with remote signalling contact	2 horizontal pitches	1	1351370000
VPU PV II 3 1000	1100 V / 40 kA	without remote signalling contact	3 horizontal pitches	1	2530550000
VPU PV II 3 R 1000	1100 V / 40 kA	with remote signalling contact	3 horizontal pitches	1	2530180000
VPU PV II 3 1500	1500 V / 30 kA	without remote signalling contact	3 horizontal pitches	1	2530640000
VPU PV II 3 R 1500	1500 V / 30 kA	with remote signalling contact	3 horizontal pitches	1	2530650000



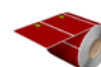
## VPU AC I / VPU AC II - lightning and surge protection for PV systems

Type	Continuous current / lightning impulse current ( $I_{imp}$ )	Version	Network	Qty.	Order No.
<b>Type I arrester - 275 V AC / 25 kA - S-line</b>					
VPU AC I 3+1 275/25 LCF S 2PE	275 V AC / 25 kA	without remote signalling contact, leakage current free	TN-C-S, TN-S, TT	1	2726760000
VPU AC I 3+1 R 275/25 LCF S 2PE	275 V AC / 25 kA	with remote signalling contact, leakage current free	TN-C-S, TN-S, TT	1	2726770000
<b>Type II arrester - 300 V AC / 50 kA</b>					
VPU AC II 3+1 300/50	300 V AC / 50 kA	without remote signalling contact	TN-C-S, TN-S, TT	1	2591080000
VPU AC II 3+1 R 300/50	300 V AC / 50 kA	with remote signalling contact	TN-C-S, TN-S, TT	1	2591090000



## PV Cable marker

Type	Design	Colour	Order No.
<b>PV Cable marker</b>			
SFX-VT 9/24 MM WS	9X24 mm cable marker, with 1 cable tie punch hole, UV-resistant	○	2621470000
SFX-VT 9/24 MM GE	9X24 mm cable marker, with 1 cable tie punch hole, UV-resistant	●	2621460000
SFX-VT 9/24 MM RT	9X24 mm cable marker, with 1 cable tie punch hole, UV-resistant	●	2799310000
SFX-VT 9/24 MM BL	9X24 mm cable marker, with 1 cable tie punch hole, UV-resistant	●	2799320000
SFX-VT 11/60 MM WS	11X60 mm cable marker, with 2 cable tie punch hole, UV-resistant	○	2621450000
SFX-VT 11/60 MM GE	11X60 mm cable marker, with 2 cable tie punch hole, UV-resistant	●	2621440000
SFX-VT 11/60 MM RT	11X60 mm cable marker, with 2 cable tie punch hole, UV-resistant	●	2900960000
SFX-VT 11/60 MM BL	11X60 mm cable marker, with 2 cable tie punch hole, UV-resistant	●	2900970000
<b>PV Device marker</b>			
THM PV 89/60 B/DR RT	Device marker, 60 x 89 mm	●	2817450000
THM PV EL 90 GE 30M	Device marker, 90 mm	●	2817440000
THM PV EL 90 RT 30M	Device marker, 90 mm	●	2817430000

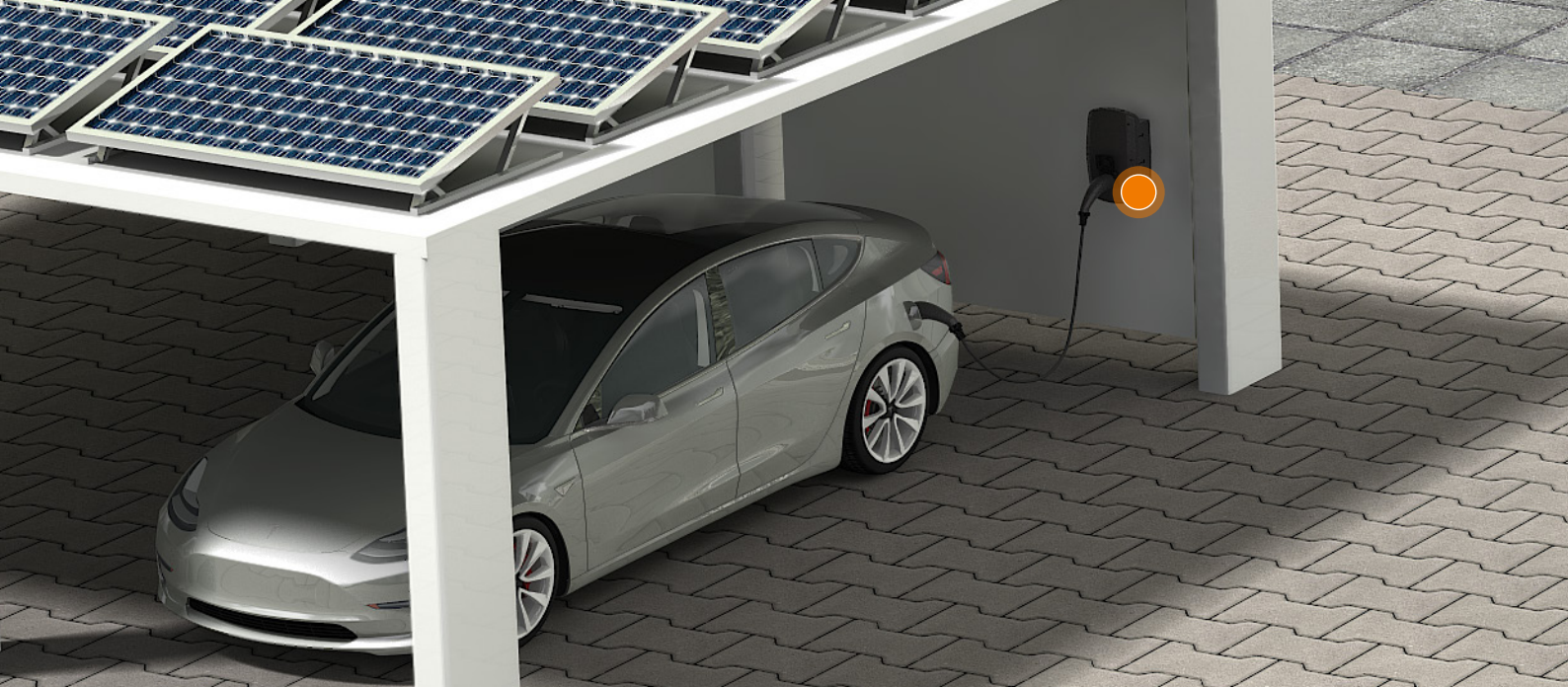


Note: The appropriate printer, THM MultiMark, is listed on p. 25

## PV warning label

Type	Design	Order No.
TABPACK PV 90/100 WFF	Fire brigade warning, pre-printed warning label, bag	2817460000
TABPACK PV 90/100 WBC	Battery warning, pre-printed warning label, bag	2817470000





# 4 e-mobility

## Smart charging solutions for individual challenges

The number of people planning to purchase an electric vehicle is growing. As a result, the demand for charging infrastructure is also increasing. Charging stations need to be not only reliable and convenient to use, but also support additional functions beyond just charging. Weidmüller developed the new AC SMART charging box family to meet these requirements. The new charging boxes can be used for classic charging at individual charging points but

are also suited for charging parks and can be integrated into smart grids. However, the AC SMART family also offers integrated LAN, WLAN and Bluetooth interfaces, a mobile app and an optional wireless module (4G/LTE), MID conforming consumption data recording, or innovative Powerline communication with the vehicle, making it a comprehensive and pioneering charging solution for private or commercial applications.



### Charging box family AC SMART

The new charging box family AC SMART is ready for any application scenario in the private and commercial sector. The platform-based charging concept with its basic equipment in three lines ECO, VALUE and ADVANCED covers the most common applications and can be adapted to individual applications.



### AC charging cables and components

We also offer a comprehensive portfolio of robust, ergonomically designed charging cables for our charging solutions, with type 1 or type 2 pin arrangements. Cables are available for you in smooth and spiral designs, in lengths between five and ten meters, along with other accessory components.



## AC SMART ECO

Type	Charging power max. / Charging current max.	Mains connection	Connecting system*	RFID Reader	Qty.	Order No.
<b>7,4 kW</b>						
CH-W-SA7.4P-E	7,4 kW / 32 A	1-phase 230 V / 32 A	Attached EV charging cable with 5m length, type 2	no	1	2875210000
CH-W-SA7.4S-E	7,4 kW / 32 A	1-phase 230 V / 32 A	Socket outlet type 2	no	1	2875200000
<b>11 kW</b>						
CH-W-SA11P-E	11 kW / 16 A	3-phase 400 V / 16 A	Attached EV charging cable with 5m length, type 2	no	1	2863090000
CH-W-SA11P7.5-E	11 kW / 16 A	3-phase 400 V / 16 A	Attached EV charging cable with 7,5m length, type 2	no	1	2911200000
CH-W-SA11P10-E	11 kW / 16 A	3-phase 400 V / 16 A	Attached EV charging cable with 10m length, type 2	no	1	2911210000
CH-W-SA11S-E	11 kW / 16 A	3-phase 400 V / 16 A	Socket outlet type 2	no	1	2863070000
<b>22 kW</b>						
CH-W-SA22P-E	22 kW / 32 A	3-phase 400 V / 32 A	Attached EV charging cable with 5m length, type 2	no	1	2863100000
CH-W-SA22P7.5-E	22 kW / 32 A	3-phase 400 V / 32 A	Attached EV charging cable with 7,5m length, type 2	no	1	2911220000
CH-W-SA22S-E	22 kW / 32 A	3-phase 400 V / 32 A	Socket outlet type 2	no	1	2863080000
*Hinweis: nach IEC 62196 Mode 3						



## AC SMART VALUE

Type	Charging power max. / Charging current max.	Mains connection	Connecting system*	RFID Reader	Qty.	Order No.
<b>11 kW</b>						
CH-W-SA11P-V	11 kW / 16 A	3-phase 400 V / 16 A	Attached EV charging cable with 5m length, type 2	yes	1	2875240000
CH-W-SA11P7.5-V	11 kW / 16 A	3-phase 400 V / 16 A	Attached EV charging cable with 7,5m length, type 2	yes	1	2911240000
CH-W-SA11P10-V	11 kW / 16 A	3-phase 400 V / 16 A	Attached EV charging cable with 10m length, type 2	yes	1	2911250000
CH-W-SA11S-V	11 kW / 16 A	3-phase 400 V / 16 A	Socket outlet type 2	yes	1	2875220000
<b>22 kW</b>						
CH-W-SA22P-V	22 kW / 32 A	3-phase 400 V / 32 A	Attached EV charging cable with 5m length, type 2	yes	1	2863100000
CH-W-SA22P7.5-V	22 kW / 32 A	3-phase 400 V / 32 A	Attached EV charging cable with 7,5m length, type 2	yes	1	2911260000
CH-W-SA22S-V	22 kW / 32 A	3-phase 400 V / 32 A	Socket outlet type 2	yes	1	2875230000
*Hinweis: nach IEC 62196 Mode 3						



## AC SMART ADVANCED

Type	Charging power max. / Charging current max.	Mains connection	Connecting system*	RFID Reader	Qty.	Order No.
<b>11 kW</b>						
CH-W-SA11P-A	11 kW / 16 A	3-phase 400 V / 16 A	Attached EV charging cable with 5m length, type 2	yes	1	2875280000
CH-W-SA11P7.5-A	11 kW / 16 A	3-phase 400 V / 16 A	Attached EV charging cable with 7,5m length, type 2	yes	1	2911280000
CH-W-SA11P10-A	11 kW / 16 A	3-phase 400 V / 16 A	Attached EV charging cable with 10m length, type 2	yes	1	2911290000
CH-W-SA11S-A	11 kW / 16 A	3-phase 400 V / 16 A	Socket outlet type 2	yes	1	2875260000
<b>22 kW</b>						
CH-W-SA22P-A	22 kW / 32 A	3-phase 400 V / 32 A	Attached EV charging cable with 5m length, type 2	yes	1	2875290000
CH-W-SA22P7.5-A	22 kW / 32 A	3-phase 400 V / 32 A	Attached EV charging cable with 7,5m length, type 2	yes	1	2911300000
CH-W-SA22S-A	22 kW / 32 A	3-phase 400 V / 32 A	Socket outlet type 2	yes	1	2875270000
*Hinweis: nach IEC 62196 Mode 3						



## AC charging cable

Type	Charging capacity	Length	Connecting system	Qty.	Order No.
<b>Charging cable</b>					
CA-T2T1-5M-7.4/1P-R-BBG	7,4	5	Plug: type 2 - type 1	1	2724920000
CA-T2T1-7.5M-7.4/1P-R-BBG	7,4	7,5	Plug: type 2 - type 1	1	2791360000
CA-T2T2-5M-11/3P-R-BBG	11	5	Plug: type 2 - type 1	1	2754380000
CA-T2T2-7.5M-11/3P-R-BBG	11	7,5	Plug: type 2 - type 1	1	2791320000
CA-T2T2-10M-11/3P-R-BBG	11	10	Plug: type 2 - type 1	1	2791330000
CA-T2T2-5M-22/3P-R-BBG	22	5	Plug: type 2 - type 1	1	2754390000
CA-T2T2-7.5M-22/3P-R-BBG	22	7,5	Plug: type 2 - type 1	1	2791300000
CA-T2T2-10M-22/3P-R-BBG	22	10	Plug: type 2 - type 1	1	2791310000
<b>Spiral charging cable</b>					
CA-T2T2-5M-11/3P-S-BBG	11	5	Plug: type 2 - type 1	1	2713330000
CA-T2T2-5M-22/3P-S-BBG	22	5	Plug: type 2 - type 1	1	2754410000
<b>Charging cable open end</b>					
CA-T2WB-5.5M-11/3P-R-BBG	11	5,5	Plug: type 2 - free conductor end	1	2791350000
CA-T2WB-7.5M-11/3P-R-BBG	11	7,5	Plug: type 2 - free conductor end	1	2828230000
CA-T2WB-10M-11/3P-R-BBG	11	10	Plug: type 2 - free conductor end	1	2828250000
CA-T2WB-5.5M-22/3P-R-BBG	22	5,5	Plug: type 2 - free conductor end	1	2791340000
CA-T2WB-7.5M-22/3P-R-BBG	22	7,5	Plug: type 2 - free conductor end	1	2828220000
CA-T2WB-10M-22/3P-R-BBG	22	10	Plug: type 2 - free conductor end	1	2828240000
<b>Charging cable open end</b>					
CA-T2WB-5.5M-11/3P-S-BBG	11	5,5	Plug: type 2 - free conductor end	1	2828270000
CA-T2WB-5.5M-22/3P-S-BBG	22	5,5	Plug: type 2 - free conductor end	1	2828260000





## **Weidmüller – Your partner in Smart Industrial Connectivity**

As experienced experts we support our customers and partners around the world with products, solutions and services in the industrial environment of power, signal and data. We are at home in their industries and markets and know the technological challenges of tomorrow. We are therefore continuously developing innovative, sustainable and useful solutions for their individual needs. Together we set standards in Industrial Connectivity.

We cannot guarantee that there are no mistakes in the publications or software provided by us to the customer for the purpose of making orders. We try our best to quickly correct errors in our printed media.

All orders are based on our general terms of delivery, which can be reviewed on the websites of our group companies where you place your order. On demand we can also send the general terms of delivery to you.

Weidmüller Interface GmbH & Co. KG  
Klingenbergstraße 26  
32758 Detmold, Germany  
T +49 5231 14-0  
F +49 5231 14-292083  
[www.weidmueller.com](http://www.weidmueller.com)

Personal support can  
be found on our website:  
[www.weidmueller.com/contact](http://www.weidmueller.com/contact)

Made in Germany

Order number: 03/2023/SMM